

THE RIDGES

2024 Annual Report

Deepening Our Roots



Preservation | Education | Research

Deepening Our Roots

If you followed along in 2024, you know what an incredible year it was. Together with our board, staff, and community, we deepened our commitment to our mission and amplified our vision to inspire the conservation of Nature.

We owe an abundance of gratitude to you—our members, donors, volunteers, visitors, staff, and board—for supporting our work and making all we have to celebrate possible. Thanks to you—and to the vision of our founders—The Ridges Sanctuary is rooted in growth and growing stronger.

As we deepen our roots, we are expanding our reach: protecting and preserving our unique and fragile environment, inspiring the next generation of stewards, and advancing ecological research that informs restoration in the face of growing environmental challenges.

We’re proud to share highlights of our 2024 accomplishments within these themes on the pages that follow. From innovative land management practices to expanded educational programming and meaningful community partnerships, 2024 was filled with progress that will echo into the future. You’ll learn about the launch of key initiatives like focusing of our Forest School program on developing future stewards, increasing accessibility through Free Fridays, protecting critical habitats through strategic land acquisition, and applying a research for restoration approach to guide stewardship efforts. Looking ahead, we remain focused on the preservation of the Sanctuary and the opportunities it provides. With your continued support, we are preparing for the future. We remain grounded in our history and driven to deepen our roots and widen our reach.

Onward together in the conservation of Nature,




Katie Krouse
Executive Director



Cover/Back photo by Rachel Lucas

Table of Contents

Pages 2-3	Board of Directors, Sanctuary Staff, Opening Letter and Table of Contents
Pages 4-5	Preservation Deepening Our Conservation Roots
Pages 6-7	Education Cultivating Deep Roots Through Play & Place
Pages 8-9	Research Rooted in Science, Growing Through Discovery
Page 10	2024 Financial Report
Page 11	What’s Ahead Master Plan Implementation
Pages 12-13	What’s Ahead Master Plan Implementation—Phase Zero
Page 14	Ways to Give
Page 15	Albert Fuller Society Honoring Legacy Giving

2025 BOARD OF DIRECTORS

Jeff Lutsey *President*
Grace Rossman *Vice President*
Chuck Germain *Treasurer*
Sher Rockway *Secretary*

DIRECTORS

Deb Fitzgerald	Mark Martin
Michelle Hefty	Ed Miller
Jone Kiefer	Ashley Prange
Rick Johnson	Bill Wolff
Laura Landergott	Dave Zuhlke
Bill Lee	

STAFF

Katie Krouse
Executive Director

Andy Gill
Assistant Director

Mary Beth Anschutz
Nature Store Manager

Eliza Banjanac
Director of Growth Initiatives

Wendy Beilfuss
Administrative Assistant

Cathy Costello
Visitor Engagement Specialist

Erik Ellison
Marketing Assistant

Jeanne Farrell
Director of Marketing

Anna Foster
Director of Programming

Ana Hinkle
Environmental Educator

Sam Hoffman
Land Manager

Victoria Holderer
Research Associate

Libby Humphries
Environmental Educator

Tony Kiszonas
Director of Research

Dan Scheiman
Visitor Engagement Specialist

Amy Shook
Naturalist

Jenn Taylor
Accountant

Zane Wulliger
Environmental Educator

SUMMER TEAM

Annika Buhr
Wyatt Isakson
Julia Maynard
Sofia Santana
Beckham Sonnabend



Preservation

In 2024, The Ridges Sanctuary took meaningful steps to deepen our conservation roots—strengthening the foundation of our ecological work and extending our reach through smarter land management, stronger community partnerships, and significant land protection milestones.

Laying the Groundwork for Long-Term Stewardship

Invasive species mapping efforts at The Ridges have been an ongoing land management priority to help safeguard the incredible native biological diversity and rare species found in the Sanctuary. Traditionally, the information and documentation of invasive populations at The Ridges has been inconsistent and often inaccessible, making it difficult to carry out proper long-term management. 2022 marked a shift: staff adopted ArcGIS Field Maps to document invasive species populations across the entire preserve and began a property-wide inventory. This has allowed us to keep mapping and treatment data in one place over time, and the ability to build a resource to inform long-term management strategies while referencing past activities.

This mapping initiative has set us up to prioritize treatments to minimize the impacts these populations have on the native species that call this place home. In the third year of building our inventory, we mapped over fifteen acres of invasive species and treated just under three acres.

Growing a Culture of Collective Care

Deepening our conservation roots involves engaging with private landowners through land stewardship outreach. Educating them about the care of natural areas is crucial for advancing our mission of promoting positive environmental behaviors. Since nature ignores human-made boundaries, collaboration with the private sector is essential for maintaining ecological health.

We have provided education and outreach through Land Stewardship Workshops, Lake Lessons, property site visits, and volunteer workdays. Additionally, we conducted targeted outreach in Baileys Harbor for phragmites management due to lower Lake Michigan water levels. In the past year, The Ridges engaged more than 40 people through these programs and contacted over 100 landowners.



Hine's Emerald Dragonfly

15 Acres of
invasive species
mapped

3 Acres treated

40+ People engaged in
stewardship programming
outreach; Over 100 landowners
contacted regarding phragmites
population management



Invasive Species Volunteer Work Crew, Family Discovery Trail

Deepening Our Conservation Roots

Preserving Land, Protecting Legacy

In 2024, The Ridges Sanctuary acquired the 12 acre Fruit property, our largest land acquisition in over 14 years. This parcel was preserved to protect groundwater quality for wetlands that serve as Hine's emerald dragonfly breeding habitat, provide upland stopover habitat for migratory birds, and prevent further fragmentation on the landscape. With this acquisition, The Ridges Sanctuary now protects over 1,700 acres.

We're proud of the impact we are making in preservation. Our efforts have helped to prepare us for the challenges ahead and ensure that The Ridges remains a Sanctuary not just in name, but in action.



Fruit Property, North End of Baileys Harbor, Adjacent to Hwy 57



Fruit Property



Education

Planting Seeds for Future Stewards: Forest School at The Ridges

It has been said that the only constant is change. From The Ridges Sanctuary, we have observed the change of seasons as spring warmed up towards summer, and as summer gave way to autumn. We heard the change in the forest as migratory birds flew in and out of the trees in the boreal forest on their journey south for the winter. Our Forest School program has also evolved, growing deeper each year.

The Forest School program was developed out of the Dragonfly Preschool in 2022 as an opportunity for homeschool students from 6-9 years old to hike and have lessons in the Sanctuary. In November 2023, lead teacher Ana Hinkle stepped in to guide a shift from play-based programming to place-based environmental education, inviting students into a more intentional relationship with the land.

By January 2024, students were developing monthly investigations using scientific methods. Across the Sanctuary, students recorded tree dominance in areas, studied the features of Sanctuary ice, tallied burrows observed on the forest floor, and worked with the dwarf lake iris study. Forest School children became more than students over the past year, they became stewards. They've been challenged to be respectful and kind to the forest and each other.

"At the Ridges Forest School the students get to teach their own lessons, explore on hikes, and most importantly - have fun!"—Elizabeth Davis



Carly Knaapen (7) Holding Lichen



Elizabeth Davis (9) Observing Wood

The Forest School program also worked to develop the students' sense of community, both within and beyond the trees. This winter, students expanded their horizons to create the *Winter Play*. What began in December as loose ideas turned into characters, a storyline, student-written scripts, and crafted costumes.

Families from Ellison Bay to Sturgeon Bay participated in the program, with a variety of student ages. In the fall of 2024, 10 families enrolled in the program, filling 13 seats. The variety of ages allowed older students to co-teach younger students, which in turn reaffirmed their own knowledge and vocabulary.

Forest School continues to grow and adapt, just like the forest itself. With every hike, every investigation, and every act of curiosity and care, we are planting seeds for future stewards—children who will grow to cherish and protect the land for generations to come.

"I love so much about Forest School, but one of my favorite parts is sit spot because it's peaceful and quiet. I can write in my journal and watch nature."—Carly Knaapen



4K Students Investigating Snow and Ice

Cultivating Deep Roots Through Play & Place

Growing Through Play: How Nature Fuels Development

In Dragonfly Nature Preschool, children are subject to unique experiences that change with the weather and seasonal conditions. Our routine intentionally emphasizes play in these conditions because when children play, they nurture their minds and bodies. Fine motor skills become fine-tuned when investigating grass with tweezers. A pile of logs used to create an obstacle course engages broad motor skills. All the while, students are building meaningful relationships with each other and the natural world.



Free Fridays Fish Printing Craft

In 2024 we offered *Free Fridays* nine times, featuring themes of Watersheds, Birds of the Boreal Forest, Conifers, Under the Swales, Orchid Observer, Pollinators, Turtles, Snakes and Amphibians (Oh My!), Monarchs, and Lichens.

Free Fridays: Removing Barriers, Inviting Connection

Free Fridays was created and implemented to make The Ridges more accessible to all. On Fridays in July and August of 2024, trail fees were waived, inviting visitors to explore the Sanctuary at no cost. To add to the experience, we offered educational activities on the front lawn of the Cook-Albert Fuller Nature Center, inviting families and adults to more deeply engage with the environment that surrounds us.

The goal behind Free Fridays was to create opportunities for people to connect and find a place at The Ridges. While \$5 does not seem like a lot, to many people it can be. When people are visiting with their extended families, the \$5 trail fee can add up and be a deterrent to visiting The Ridges.

Free Fridays support our mission of preservation, education, and research by connecting new and returning visitors with staff and passionate volunteers. The activities engage people with where they are in

Rooted in Rhythm:

A Day at Dragonfly Nature Preschool

A day in Dragonfly Nature Preschool is filled with play. Children are welcomed into the yard by invitations for play provided by nature and teachers alike. A community circle where we build connection through movement, song, and story follows. Then, we are off into the forest. In the forest, children hike, learn, and explore! Before returning for dismissal, we enjoy the offerings of the forest independently in sit spot. The day concludes with sharing gratitude.



Free Fridays Identifying Conifers

their journey with nature, whether that meant asking questions to overcome something that frightens them or touching a macroinvertebrate swimming in the water. The memories created during Free Fridays are unique and will last a lifetime and hopefully leave them more inclined to protect the natural world around us.

Throughout the summer, we welcomed many families and learners of all ages. In all, the program saw over 2,200 visitors. Most visitors had only been to The Ridges once or twice or didn't realize we had more to offer for families. Some families and individuals told us they had only decided to visit because they had heard the trails were free during the summer months. Several local families came back each week to fill out their Free Fridays Passport and collect stamps, excited to see what we had to offer each week. Free Fridays is made possible in part by 100+ Women Who Care Door County.

Free Fridays showed us that small changes can make a big difference—and that connection begins with an open invitation.



Research

At The Ridges Sanctuary, our approach to conservation is guided by a principle both simple and profound: we cannot restore what we do not understand. This concept forms the foundation of our “research for restoration” initiative—a commitment to thoughtful, science-based stewardship of the unique and sensitive ecosystems under our care.

Like the enigmatic orchids we work to protect, our stewardship stems from a commitment to understanding the complex, interwoven systems of this unique environment. Through thoughtful, evidence-based inquiry, we aim to restore and nurture these ecosystems with care, precision, and purpose.

As conservationist M. Breskiewicz observed in 2000, “lack of knowledge is as big a threat as any to sensitive species.” This quote comes from a ram’s head lady’s slipper orchid report and applies to all of the work done here today.

Another factor is the basic principle of doing no harm to this incredible environment here. To simply attempt restoration activities without trying to have as much understanding as possible may not be time- or resource-effective and certainly poses a potential risk to this ecosystem. Work such as this should be purposeful and methodical.

The Hidden Brook area serves as a “living laboratory” for The Ridges Sanctuary due to its historical use. This allows much of the research and restoration work to occur in an already disturbed landscape.

How Research Informs Our Work

Research opportunities are informed by our research for restoration approach and guided by The Ridges mission. Restoration decisions are data-driven to conform to the promotion of environmental behaviors through impactful ecological research.

With this perspective in mind, in-house research can be developed and expanded, and outside institutions may conduct research in the Sanctuary through a permitting process, allowing The Ridges access to additional data.

As a result of these frameworks, projects include:

- The maintenance of the initial orchid research with the ram’s head lady’s slippers to inform decisions.
- An ongoing showy lady’s slipper project with hand pollination, seed collection, lab germination, and seedling planting in the orchid shade house, with research plots developed.
- Experimentation with the appropriate methodology for the transplantation of dwarf lake iris allowed assistance in the rescue of plants from a recent

Shade House Orchids

221 Tuberous grass-pink orchids

108 Showy lady’s slipper orchids

239 Yellow lady’s slipper orchids

road project. This standard operating procedure also directed the transplantation of dwarf lake iris into five research plots in the Range Light Corridor.

- In partnership with the Climate Change Coalition of Door County, we are applying the same methodical approach to the Boreal Climate Survivability Project to monitor the success of reforestation in Door County.



Transplant

Shaping the Future—Locally and Beyond

Our long-term vision behind these strategies is simply learning as much as possible about the natural world and the constant interactions taking place. If the dwarf lake iris can’t be encouraged to flower, we can predict a clonal decay taking place, possibly to a point of no return. If orchids don’t receive assistance in migration into different microhabitats that might provide a bit more time, we can foresee the struggle of some of these species. These predictions are possible because of our research.

Our research also benefits broader efforts. By documenting tree survivorship, the public can be informed on best practices in reforestation/afforestation and ecosystem pitfalls that may occur.

Dwarf Lake Iris

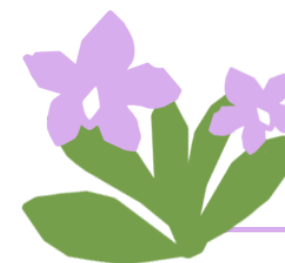
801 Stems and 71 flowers in control plot (1 meter x 1 meter)

72 Stems and 1 flower in extant plot (1 meter x 1 meter)

Renewal buds in all of the transplanted plots



Showy Junior



Laying a Foundation That Takes Root

The dwarf lake iris project is an example of this foundation taking root. Because this project came about so serendipitously, it allowed us to apply the research for restoration paradigm from the very beginning to a program that now seems to be steadily progressing. The ability to document baseline conditions and experiment with standard operating procedures before any environmental disturbance occurred was a benefit. This was followed by the establishment of eight experimental and one control plot with renewal buds documented on New Year’s Eve.

One recent event highlights the significance of this endeavor: A rather distraught individual reached out with a personal concern regarding a population of dwarf lake iris that had been quite negatively impacted by a road project north of Baileys Harbor. It was with great relief that this individual was informed that a joint rescue operation had occurred, with The Clearing and The Ridges working together to transplant a large section of the irises prior to disturbance, and are now growing here at The Ridges and at The Clearing. Because of the previous research on the transplantation of this plant, our rescue operation seems to be a success to the relief of the young lady and others.

At The Ridges Sanctuary, our research for restoration approach is rooted in curiosity, science, and care. By learning and sharing knowledge, we not only support the survival of individual species but help entire ecosystems grow stronger across their growing regions. Grounded in understanding, our work is helping shape a resilient future for this extraordinary place.

Orchid Trekking

New population of downy rattlesnake plantain orchids found with over 1,000 plants

Over 5,500 orchids recorded on Appel’s Bluff, with 15 species documented



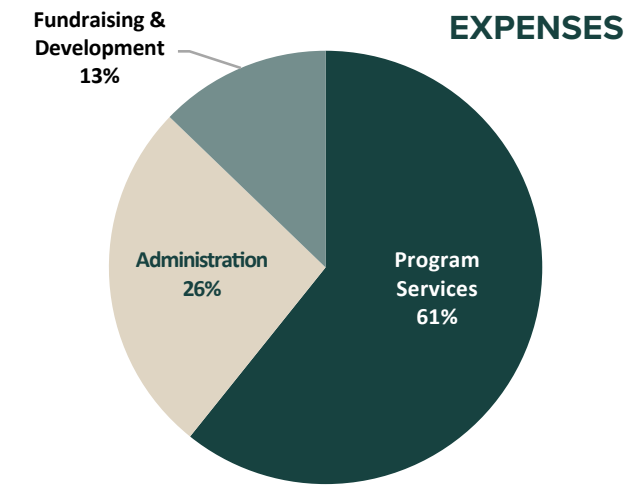
Root Studies

2024 Audited Financials

	2024	2023
REVENUES		
Contributions – Undesignated	\$531,770	\$682,827
Contributions – Designated & Endowment	\$886,753	\$778,068
Memberships	\$97,225	\$103,398
Net Special Events	\$23,953	\$24,576
Net Nature Store Sales	\$79,525	\$80,837
Trail Fees, Tours & Guided Hikes	\$96,167	\$86,408
Workshops & Camps	\$110,997	\$76,637
Other Support and Revenue	\$184,094	\$176,502
TOTAL REVENUES, SUPPORT AND GAINS	\$2,010,484	\$2,009,253

EXPENSES		
Program Services	\$841,692	\$557,314
Administration	\$366,605	\$613,707
Fundraising & Development	\$177,154	\$158,466
EXPENSES	\$1,385,451	\$1,329,487

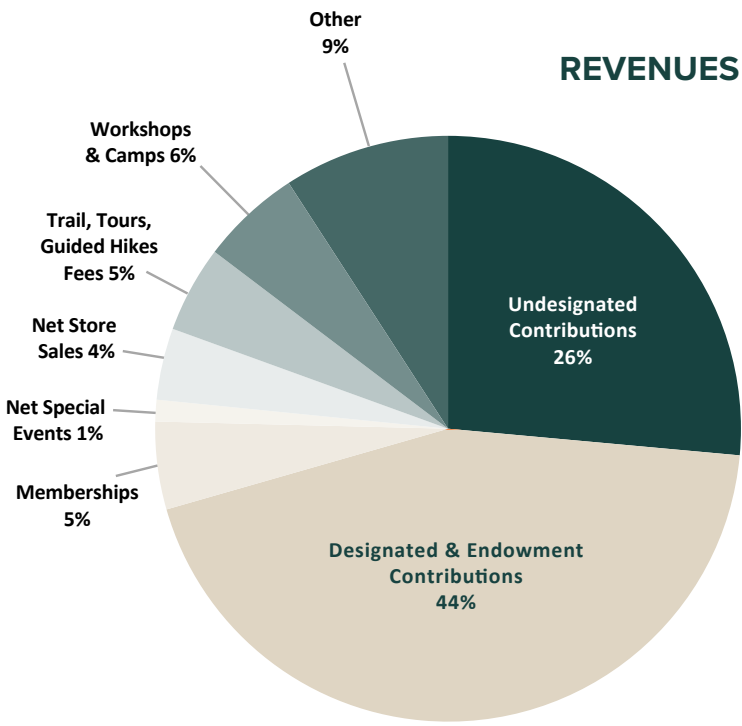
CHANGE IN NET ASSETS		
Change in Net Assets Before Gains & Losses on Investments	\$625,033	\$679,766
Net Realized & Unrealized Gains on Investment	\$363,025	\$374,824
Change in Beneficial Interest in Perpetual Trust	\$6,576	\$10,482
Change in Net Assets	\$994,634	\$1,065,072
Net Assets – Beginning of Year	\$14,530,340	\$13,465,268
NET ASSETS – END OF YEAR	\$15,524,974	\$14,530,340



	2024	2023
ASSETS		
Cash & Cash Equivalents	\$913,791	\$981,728
Accounts Receivable	\$ 21,188	\$ 15,341
Grants Receivable	\$109,977	-
Prepaid Expense	\$ 18,489	\$ 14,014
Nature Store Inventory	\$ 50,523	\$ 30,029
Land & Fixed Assets – Net of depreciation	\$ 9,104,983	\$ 8,991,968
Cash Restricted for Long Term Purposes	\$ 1,074,805	\$ 627,118
Ridges Endowment Investments	\$ 4,148,603	\$ 3,776,920
Other Assets	\$ 156,253	\$ 149,677
TOTAL ASSETS	\$15,598,612	\$14,586,795

LIABILITIES & NET ASSETS		
Accrued Expenses, Payroll & Other	\$73,638	\$56,455
TOTAL LIABILITIES	\$73,638	\$56,455

NET ASSETS		
TOTAL NET ASSETS	\$15,524,974	\$14,530,340



What's Ahead

Master Plan Implementation

Since the approval of The Ridges Sanctuary’s 20-Year Master Plan in 2023, we’ve made steady progress toward turning that vision into reality. In 2024, the Board of Directors took a pivotal step by prioritizing a set of foundational projects—collectively referred to as Phase Zero—and approving the development of a PreDesign Study. This study helped sharpen the focus of our Master Plan, refining priorities and identifying the projects we will undertake over the next 5–10 years.

Elevated through this process were three major initiatives: Phase Zero, the future Education Center and Campus, and a new Research Station located at the current Ridges Inn & Suites property.

Alongside PreDesign and Phase Zero efforts, we’ve also implemented key strategies that have strengthened the Sanctuary’s core operations. Since 2023, we have:



Photographs featured in this report are courtesy of photographers Rachel Lucas, Paul Burton and John Nienhuis, as well as staff members from The Ridges Sanctuary. Their work helps tell the story of our mission in action.

What's Ahead

Master Plan Implementation – Phase Zero

Since 1937, The Ridges has provided nature-based programming for both residents and visitors of Door County. Today, we welcome more than 40,000 visitors annually, including over 500 adult learners, 190 summer campers, and 50+ year-round early childhood program participants. Many are drawn specifically to explore the Sanctuary’s rare landscape, which includes the southernmost boreal forest in North America. We remain committed to delivering meaningful educational experiences that connect people of all ages to the unique ecology of this region.

One of the primary challenges to providing an impactful experience is a lack of adequate space. Since the opening of the Cook-Albert Fuller Nature Center in 2015, interest and demand in Ridges programs have grown year after year. The sole classroom in the Nature Center and the historic Kaye and Marshall Cabins on our North Campus have accommodated our education and engagement. As demand and interest continue to grow, we have outgrown usable space, especially in the winter when restrooms adjacent to the cabins must be shut down, consequently eliminating the possibility for regular programming at our North Campus. The demand from program participants is simply overwhelming our current facilities.

In 2024, The Ridges Sanctuary Board and Staff identified an important series of projects known as Phase Zero following the approval of a 20-year Master Plan. Phase Zero consists of infrastructure improvements that provide immediate impact on Ridges operations, support our growing education programming, and address the lack of capacity we have with our current facilities. The renovation of the Kaye and Marshall Cabins to year-round facilities, the construction of a new volunteer workshop, and the renovation of the North Campus restroom facility (adjacent to the cabins) to become a year-round facility, have been included in Phase Zero.

This project serves as a precursor to major capital investments outlined in our Master Plan in Education and Research. Completion of these projects is a demonstration to Ridges members, donors, and partners that we are committed and capable of implementing our Master Plan.

THE RIDGES

MASTER PLAN IMPLEMENTATION: PHASE ZERO

SPACE TYPES

1 NORTH CAMPUS RESTROOMS

Refurbishment of the existing restrooms will allow for improved access from the trail and cabins. The layout will be modified to accommodate additional fixtures to better serve students and visitors to TRS. Most importantly, this updated facility will be a year-round space unlocking the potential of all of north campus in four seasons.

2 VOLUNTEER WORKSHOP

A new structure will be relocated and built to better suit the anticipated increased programming needs of TRS. The new building will be positioned to minimize disturbance to the surrounding wetlands and will aesthetically blend with the character of the surrounding buildings and landscape. A larger footprint will provide flexible workspace, increased storage, and improved access between indoor and outdoor work areas.

3 KAYE AND MARSHALL CABINS

The historic cabins provide indoor education and program space supported with outdoor classrooms and access to TRS hiking trails. This phase incorporates general maintenance improvements and enhancements to allow for year-round programming, including heating/cooling systems, insulation, and roof overhangs for outdoor learning space.

Anticipated Completion of Phase Zero Projects: End of 2025

12

13

Ways To Give

Thank you for your commitment to inspiring the conservation of Nature. Your support enables us to continue to deliver on our important mission and respond to changing circumstances. Together we have the opportunity to promote positive environmental behaviors through impactful educational experiences, land management and protection and ecological research. Your support helps us keep our promise to protect and preserve the beauty and wildness of this special place for generations to come. The Ridges Sanctuary thrives because of donors like you.

Undesignated

We cannot do what we do without you! Thank you for supporting The Ridges Sanctuary with your fully tax-deductible contribution. Your generosity allows us the flexibility to meet our most urgent needs and continue delivering meaningful programs and initiatives across our mission.

Education

We aspire every day to engage our youth with a deep appreciation for the natural world and foster a sense of lifelong responsibility to care for our natural spaces. Your support of Education at the Ridges helps us expand our capacity to continue our important work in early childhood and youth environmental education. With your help we are cultivating future stewards who will cherish and protect the land, just as we do today.

Preservation

Support for our preservation efforts helps us protect and manage the unique and sensitive ecosystems within the Sanctuary. Your contributions allow us to acquire critical lands, implement thoughtful land management practices, and ensure that the natural beauty of The Ridges endures for generations to come.

Research

To protect and preserve the critical habitats found within the boreal forest, we must understand it. Donor support of Research helps us understand the sensitive ecosystems we protect to properly manage and restore these important habitats. In collaboration with volunteer citizen scientists, we answer questions about threatened or endangered plants and animals, climate change impacts, management needs and more. A gift empowers us to do more and understand the needs of the vital habitats we all protect.

Endowment

A gift to our Endowment ensures the future of The Ridges Sanctuary. Endowment contributions provide long-term support for our mission, ensuring that this unique place – and the work we do – will thrive in perpetuity.

Tribute Giving

Tribute gifts offer a meaningful way to honor and remember and honor the people that are important to you. Your tax-deductible contribution helps protect our landscapes and celebrate the lives that have made a difference.

Stock Contributions

A gift of stock to The Ridges Sanctuary is a powerful way to support our core missions areas—Preservation, Education and Research – while potentially realizing tax benefits. Your investment ensures that The Ridges can continue its important work for years to come.

Sandy Swale Memorial Bridge Tribute

The Sandy Swale Memorial Bridge offers a unique and lasting way to honor the memory of loved ones who have passed. Nestled in a tranquil and scenic setting, the bridge stands as an iconic tribute where individuals can dedicate personalized boards inscribed with heartfelt messages. Each tribute becomes part of a serene landscape, offering a peaceful place for reflection and remembrance. All contributions to the Memorial Bridge project support The Ridges’ Endowment Fund. Tribute boards are available in the following formats: two lines for \$600, four lines for \$750, and six lines for \$900.



1,200+ Donors supporting our important work in Preservation, Education and Research annually



1,700+ Acres Protected in Baileys Harbor and Jacksonport

Albert Fuller Society: Honoring Legacy Giving

The Albert Fuller Society recognizes individuals who have made a lasting commitment to The Ridges Sanctuary through legacy giving. Named in honor of Albert Fuller, the visionary botanist who played a pivotal role in the founding of The Ridges, the society celebrates those who choose to support the Sanctuary’s conservation vision for the future.

Leaving a legacy gift is a way to ensure that what you care about continues to thrive and benefit the future. It is a powerful way to make a lasting impact and ensure your commitment to environmental stewardship will endure. Members of the Albert Fuller Society share a deep connection to the Sanctuary and a commitment to its preservation. Their generosity helps safeguard this unique and precious treasure.

Albert Fuller Society Members

- Anonymous (4)
- Edith M. Ballin
- Hugh & Joyce Bell
- Julie & John Carpenter
- Kerstin Conner
- Andrew & Tonya Crowell
- Robert Davis III
- Andy & Katie Gill
- Barbara Gould
- Pat Hale
- Mary Hedeem
- Pam & Craig Heilman
- Ronald Horn
- Rev. Nancy Hooper Horvath
- Daniel Meyer & Mary Jean Kraybill
- Steve & Marsha Krzyzanowski
- Michael & Judy Roy

- Karen & Mark Smith
- Tim & Carol Smith
- Michael P. Steffen
- Diane & Terry Steiner
- Janet & Thomas Sutter
- Drew & Mary Tucker
- Tom Turriff
- Thora M. Vervoren
- Hank & Judy Whipple
- James & Betty Williams
- Barbara & Gary Yeast
- Jane McKie & Dave Zuhlke

*Current list of members as of July 2025

To access The Ridges 2024 Annual Report with a complete list of donors, visit ridgessanctuary.org/financials/

To learn more about legacy giving and its impact, please contact The Ridges Sanctuary at 920-839-2802. We will be available to help determine the right giving option to meet your charitable goals.

“This area not only belongs to Door County but also the people of Wisconsin and above all, it belongs to future generations.”—Albert Fuller



88 Years of protecting and preserving critical boreal habitats in Door County

THE RIDGES

The Ridges Sanctuary

PO Box 152

8166 Hwy 57

Baileys Harbor, WI 54202-0152

(920) 839-2802 ridgessanctuary.org

Electronic Service Requested

NON-PROFIT ORG.
U.S. POSTAGE
PAID
BAILEYS HARBOR, WI
PERMIT NO.1



More than a walk in the woods

Mission

The Ridges Sanctuary promotes positive environmental behaviors through impactful educational experiences, land protection and management, and ecological research.

Our vision is to inspire the conservation of Nature.



**Learn More About
Our Impact**

Thank you for your Generous Support

Your support makes everything we do possible. Thank you for supporting our incredible organization, and helping us to deliver on our mission to promote positive environmental behaviors through impactful educational programs, land management and protection, and ecological research. Together we continue to inspire the conservation of Nature.

This is an Annual Report Listing of those who have given to The Ridges Sanctuary from January 1 through December 31, 2024.

Your gift deserves to be acknowledged. If we have made an error, please notify us so that we can correct it for future publications. If you prefer to remain anonymous, please let us know at 920-839-2802 or info@RidgesSanctuary.org.

Bequests

Carl & Judith Jackson	Paul Preston	Traven Family Fund
Katherine M Smith Trust		

Designated Other

100+ Women Who Care Door County Charitable Fund	Lori & David Nicholas Family Foundation	The Richard M Schulze Family Foundation
Cynthia Crock	Edward & Sandy Miller	Nancy & Bob Wise
	David & Lori Nicholas	William & Kathy Wolff

Education Designated

Anne Altshuler	Rebecca Hawker	David & Colette McDonough
Stefan & Joan Anderson	Shirley Hedman	Maureen Sandstrom McGrath
Mark Bernstein	James & Susan Heiden	Keith & Stacey McKendry
Blacksmith Inn On the Shore	Barbara Hirsch	Robert & Linda Merline
Patricia & James Blair	Judy Hollingshead	Susan Moore & Pat Kiley
Michael & Lucy Bloedorn	Jone & Kurt Kiefer	Martha Newkirk
George Cobb	Oliver Kiefer	David & Lori Nicholas
Jean Davison	Thomas Klosterman	Nancy Nicholas
Steve Dullard	Kurt Kober	Joe & Judy Novicki
Lunette Eichler	Richard Krueger	John & Cynthia Pierson
Sherrill Eichler	David & Lynn LaLuzerne	Michael & Carole Raap
Lori Eichler-Leppen	Ruth Linnemann	Patricia Rom & Glenn Paustian
Fall 50 LLC	Susan Livengood	Rotary Club of Door County North
Steve & Lisa Friedland	Katherine Luck	Schreiber Philanthropy
Marilyn Hansotia	Justin Madigan & Allison Hahn	Paul & Deborah Schumacher
John Harris & Lisa Palermo	Terry & Ally McArdle	Sid & Carol Simmons

Karin Skare and Scott Schmitz
Tim Spurgin & Gretchen Revie
Randel Steele & Margaret Gonzales
Ronald & Bev Stieglitz

Laurie Stockmeier
Laraine Taylor
Earl Thompson
Arlie & Mary Tucker

Philip Villasenor
Carolyn & Curtis Whisman
Lynda & George Withbroe
Margaret Wolf

Endowment Designated

Marjorie & Dan Andrae
Lynn & William Antholine
Hannah Bergman
Susan Crawford & Jeff Rosemann
Robert Davis III
Susan & George Dugan
Chuck & Joanne Dull
Barbara & James Erlenborn
Sue Fedenia & Jeff Stanley

Tom Birmingham Great Northern
Construction
John Harris & Lisa Palermo
Susan Kressin & James Radtke
Jean & Mitchell Leavitt
Mitchell & Jean Leavitt
Will and Mary Leland
Sandy & Edward Miller
Lin Morgan
Todd & Sheryll Rockway

John & Mary Rooks
Karen Sandstrom
David & Pamela Schmitz
Laurie Stockmeier
Charles Westcott
Carolyn & Curtis Whisman
Jane & John Whitney
Carmen & Gene Witt
William & Kathy Wolff

General Undesignated

Abbott Laboratories - EGC
Fred & Cynthia Acker
Michelle & Tim Adensam
Thomas and Patricia Agazzi
Richard Albert
Kenneth & Mary Ellen Alexander
Mark and Andrea Allen
George & Mary Allie
Helen Ambuel
Jack & Susan Anderson
Kim & Cliff Anderson
Linda Anderson
Richard & Janet Anderson
Thomas Anderson
Marjorie & Dan Andrae
John Andrews
Anonymous
Anonymous
Anonymous
Anschutz Plumbing & Heating Inc
Judy & George Antos

Jeff & Jennifer Arch
Nancy Armbrust
Lawrence & Joan Balistreri
Amanda Banet
David Barnes
John & Jennifer Barnes
Tom & Diane Barounis
David Barras
Harriett Barrett
Jean Barrett & Paul Neuman
William & Linda Bauer
Dan Baumann
Susan Bayer
Bruce & Patty Becker
Elizabeth Beeson
Maggie Behme
Mary & David Bell
Ricki Bellos
Kirsten Benidt
Joan Bennett
William Beringer

Scott & Dawn Bethke
Judi Blahnik
Jody & Greg Bleck
Cheryl Bliss
Phil & Cindy Block
Michael & Lucy Bloedorn
Bmejwen Fund
Marilyn Bolton
Dana & Jamie Bolwerk
Kendra Bonderud & Kenneth
Parsons
Jerry Boyd
Ken & Sue Boyer
Norma & John Bramsen
Lisa Brodsky
Linda Brooks
Laura & Anthony Broullire
Genie Brown
Terry & Linda Brown
Patricia Brunmeier
Karen Buck Clapp & William Clapp

Donald Lee Buckingham	Coyote Roadhouse	Anne & Richard Egan
Ted & Judy Buenzli	Cynthia Crock	Elizabeth B and Philip J
Michelle Buerger	Susan Cubar & Thomas Jordan	Hendrickson Foundation, Ltd.
David & Marge Bultman	Shelly & JD Culea	Michael Elkow
Andrea & Carl Bumpurs	James & Lisa Cummings	John Emanuel
Kris Bungener	Sarah Cunningham	Mark Emmerling
James & Barbara Bunning	Cheryl Daniels	John & Claire English
Susan Burchell	Donna Danielson	Peggy Enquist
Amy & Reed Burke	Stephen Daugherty	Ephraim Shores Resort
Patrick & Nancy Burke	John & Susan Davenport	Equifax Inc
Bonnie Bush	Robert Davis III	Debra Errington
Linda Busha	Cheryl & John Dawson	Tom & Andrea Esau
Joseph & Terri Campshure	Cynthia & Jim DeBruine	Jeanne Esch
Tim Carew	Mike Degen	Joan & David Fagan
Gilbert & Joyce Carlson	James DeGroot	Farmers Insurance
Patricia & Scott Carlson	Greg Delaruelle	Donald Feilbach
Susan & David Carlson	Carolyn Delery	Mark & Julie Fialkowski
Diane Carr	Diane & Robert Dempsey	Carrol Fibich
Karen Case	Dan Dexter	Kathryn & Corey Finkelmeyer
Mary Lou Cassingham	Karen & Jeff Dickmann	George & Judy Fitchett
Darlene Castonia	Jay & Nancy Dickson	Debra Fitzgerald
Stuart & Deborah Chadde	Paul Didion & Yvonne Bellay	Russ & Linda Forbess
Brian & Eve Chapin	Marianne & Don Diekman	Pat & Diane Ford
Deb & Don Chapman	Dorothy & Robert Dieter	Joan Fordham
Mike & Ginny Chiaverina	Richard & Sandra Dirks	Betty Forest
Christy & Frank Christensen	Steven Doelder	Mary & Richard Foster
Nancy Ciezki	Patrick & Patti Doughman	Irene Fox
Jerry Ciszewski	Ed & Adele Douglass	Barbara Frank
Peter & Barbara Classen	Nathan Drager	Elizabeth Franklin
Glenn & Mary Clayton	Judy Drew	Janet Frederiksen
Marshall & Arlene Colburn	Dan Drye	George & Bernie Freeman
Margaret & George Collier	Kris & Marc Dubick	Bill & Sarah Freyman
Marshall Collins	Steve Dullard	James & Iris Friedlieb
Comcast	Margot Dunn	Tim & Marsella Fults
Richard Conner	Don & Brenda Durand	Larry Gales & Holly Smith
Dennis & Bonnie Connolly	Pam & Adrian Duszynski	Garden Club of Greater Milwaukee
Peter & Beverly Ann Conroy	Yvonne Dwonch	Jac & Edith Garner
Judith Corbeille	Greg Dziadosz	Lois & Gerald Garrity
Barbara Coriden	Ecology Sports	Sharon Gaskill
Andrew Coulson	Michael & Julie Edwards	Stephen & Aimee Gauger

Cheri Geiger	Coggin & Don Heeringa	Veronica Johnston
Chuck & Faye Germain	Nathan & Stacie Heidegger	Jon & Sally Jonas
Dorothy Gerrits	Paul Heim & Julie Watkins	Debbie & Gary Jones
Gary Gerstner	John & Liz Heller	Rosemary & Lee Jones
Carl Giessel	Robert & Jean Henke	Jacqueline Judd & Michael Shulman
Julie Gilbert	Hepburn "Bootstrap" Foundation	Margie & Tom Juedes
Joan & Gene Gilbertson	Scott & Yvonne Herr	Dirk Kagerbauer
Davis Gill	Deanna & Nathan Hertrich-Nelson	Robert Kahl
Margaret Glatz	Tom & Cheryl Heth	Judith Kalb
Dave Glenn	Pat & Jeff Hickey	George & Shirley Kaub
Dennis Glocke	Kenneth Hilbig-Ross	Inger Kay
Jay & Linae Golla	Alan & Sharon Hillard	Barbara Keating
Google	Allan Hins	Stephanie Keller
Fawn Gottschalk	Barbara Hirsch	Pamela & Ron Kelley
Barbara Gould	Marian Hislop	Jack & Carrie Kelly
Gwenn & Joseph Graboyes	Judy Hoard & Beth Ringgenberg	Susan Kennedy
Hildy Grady	Kathy Hogan	Raymond & Mary Kent
Paula Graff	Steve & Annie Hogler	Kent and Kristin Powley Family Fund
Ruth Ann Graham	Mark & Michaela Holey	Marsha Kerley
William & Donna Granger	Thomas & Janelle Hollingshead	Dennis & Barb Kessler
Tad & Deb Greene	Barbara & David Holman	Deborah Kiedrowski
David & Marleah Grinnell	Seth & Briana Holubar	Jone & Kurt Kiefer
John Guenther	Ruth Horbinski	Bruce & Ricky Kiesling
Pat Hale	Linda & Paul Houdek	Kiewit
Nancy Hammen	Patricia Huber	Catherine Kilcoyne
David & Terri Hanke	John Huff	Alan & Anne Kimbell
Elizabeth Hansen	David Hughes	Susan Kinde
Harbor Sands Condominium Association, Inc.	Barbara Hyde & Paulette Starck	Robert & Sue Kinosian
Margaret & Jeff Harding	Clement & Kathleen Imhoff	Marcia & Allen Kirtland-Nottke
James & Ann Harris	Harriet Irwin	Terry Kita
John Harris & Lisa Palermo	Judith Jackson	Michael & Martha Klinker
Kate Harris	Jacksonport Women's Club	Patricia Kloppenburg
Willard & Mary Hartman	James & Deborah Jarvis	Lucy Klug
Eugene Haug & Judith Stolper	Andrea Jauquet	Patrick & Kris Knapp
Richard & Carrie Hauser	Mark & Ann Jenkins	Carla Knickrehm
Neil & Ann Havlik	Kristine Johaneck	Jim & Tallya Knippen
Beth Healy	Albert Johnson	Janet & Karl Knock
Kendra Heckmann	Arlene Johnson	Aaron Knopf
Patti Hedeem	Brian & Kristin Johnson	
	Mark Johnson & Eric Alborn	

Richard Knowles	Anthony & Judith Licata	Keith & Stacey McKendry
Julie & Merritt Knox	David & Caroline Link	Meghan McKendry
Bev Knutson	Carolyn & Eldon Linnebur	Daniel & Susan McLevige
James & Marion Kobussen	Margaret & William Lipschultz	Joseph Melendes
Paula & David Kocken	Jill Littlefield	Richard Merkhofer & Maria Aristigueta
David & Kendall Koehler	Susan Livengood	Emilia Mickevicius
Moriah Koehler	Brad & Monica Lobenstein	Mickey & Ray Mickevicius
Kevin & Carolyn Kolasinski	Janet Loewi	Microsoft Matching Gifts Program
Linda Kolberg	Deborah & Paul Logerquist	Jim & Peg Middendorf
Betty Ann Kolesari	Bob & Laura Love	Diane & William Miller
David Kopitzke	Karen Ludvigsen	Larry & Janet Mohr
Joan Korb	Charlotte Lukes	Wayne & Barbara Mohr
Annie Kordesh	Barbara Lundquist	Sue Moore & Chuck Czaplewski
Joe Korn	Sharon Lutsey	Pat & Bill Moren
Don Korte	Will Lyon	Ann & Michael Morgan
Karen Kosky	James & Gail Mahoney	Barbara Morgan & Deanna D'Abbraccio
Jann & Keith Kostecke	Laura & Kevin Maloney	JoAnne Morris
Susan Kressin & James Radtke	Lizabeth Maltman	Nancy Morris
Margaret & Steve Krings	Jeff & Amy Maras	Carol Moseson
Carl & Nancy Krouse	Jon & Marjorie Margolies	Kevin & Kate Moss
John & Karen Kruger	Bob Marquis & Carol Kelly	Mary Moster
Lilli Kuzma	Douglas Martin	John & Nancy Munch
James Labiak	Mark Martin & Susan Foote-Martin	Monica Myers
Cynthia LaConte	Richard Martin	Walter & Elaine Naleway
David & Lynn LaLuzerne	Cory Masiak	Rebecca & Michael Nash
Clay Lambert	Randy & Karen Mathewson	Shawn & Maxine Nehmer
Laura & Maia Landergott	David & Marjorie Mau	Cindy & Bruce Nelson
Mary & Ed Langbein	Lois & Ron Mauermann	Meryl Nelson
Linda & Eric Lanke	Jennifer Maurer	Samuel Nelson
Brian & Sue Lanser	Joan Maute	Sandra & Dennis Nelson
Sara & Bob Larsen	Terry & Ally McArdle	David & Lori Nicholas
Donald & Kayval Larson	Andrea McAuliffe	Nicholas Family Foundation
Cathy & Ken LaTour	Bob McCurdy	Susan Nicholas Fasciano
Allison Lauer	Maureen McDonnell	Dan & Penny Niesen
Ann Lawler	David & Colette McDonough	Joshua Noe
Donna Leighton	Emilie McDonough	Janis Norem
Judith Leonard	Sarah McGowan	Joni Norton
Richard & Carol Leonard	Maureen Sandstrom McGrath	Joe & Judy Novicki
Lawrence & Elfriede Leporte	Marilyn McGraw	Phoebe O'Connell
	Donna McGreal & Robert Clemens	

James OBrien	Joseph Rabinowitz	Gretchen Schmelzer
Mark & Germaine Olm	Patty Ray	Greg & Renee Schmill
Janet & David Olsen	Jeanne Reichert	David Schneider
Jefren Olsen & Kathy Rasmussen	Lisa Reineke	Thomas & Susan Schouten
David Olson & Claire Fritsche	Judith Rhodes	Anne Schuette & Daniel Hornung
Judy Olson	Gordon Ridley	Bill Schult
Brian & Debbie O'Mara	David Rieckmann	Craig & Sandy Schultz
Mark Opperman	Larry & Bonnie Riffe	Jim & Marti Schultz
Margaret Owens	Barbara & Paul Ristau	David & Mary Ellen Schulz
Frank & Kathy Pammer	Rockwell Spark	Beverly & Gary Schulze
Domingo & Ann Parada	Carla Roden	Carol Schuster
Robert & Catherine Parks	Julie & Randall Roenigk	William Schuster
Lissa & Keith Parr	Franklin Rogers	Barbara & Jerry Schutt
Greg & Julie Pawlak	John & Mary Rooks	Andrew & Sarah Schwalbe
Kay Pearson	Roots of Oak Fund Community	Carl & Barbara Schwartz
Peil Construction	Foundation for Fox Valley	Jim & Judy Schwengel
Peninsula Pacers LLC	Deborah Rosenthal	Kathy & Mike Sears
Peninsula State Park Golf Course	Grace & Glen Rossman	Jane & Dan Seidl
Edwin Pentecost	Michael Rothe	Tricia Shinnors
Judy Perkins and David Keen	Kathryn Rothstein	Mark & JoAnn Shropshire
Eric Perlman & Janelle Peotter	James & LaDona Rowings	Fredrick Sieker & Janet Van Glarik
David Petering	Michel & Judy Roy	Marie Sieker & Rod Matthews
Amy Peterson	Mary Rubach	Denise & Steve Simeth
Scott Peterson & Judith Desenis	Pam Rubbelke	Jack & Barbara Simon
Paul Phillips	Michael & Sandra Ruddick	Laura Simpson
Cynthia & John Pierson	Dorothy Russell	SixSibs Foundation
Mary Pikul Anderson	Jean Russell	Barbara & Kenneth Skora
Catherine & David Piotrowski	Bob & Sue Ryan	Richard & Mary Slavik
Mike & Angie Plambeck	Mary & Peter Sandberg	Carol Slusser
Dennis & Ann Ploor	Jim & Kathy Sanden	Lori & Jim Smasal
Sandra & Arthur Poehlman	Kristine Sandrick	Ben Smith
Kathleen & Robert Poi	Nancy Sargent	Patricia & Stephen Smith
Mark & Maureen Polczynski	Dianne & Gordon Saron	Dick & Mary Smythe
Rex & Linda Pope	Martha Sauter	Stephen & Anda Sokalski
Kathy Potter	Katherine & David Savage	Roberta & Steve Sparenberg
Principal Financial Group	Megan Sawyer	Betty Sperberg
Foundation	Kirk & Donna Scattergood	Mary Spittell
H J Przybylo	Rick Schaefer	John & Jill Spude
Stewart Purkey	Stephen Scheil	Tim Spurgin & Gretchen Revie
Michael Quaine	Dan & Samantha Scheiman	

Susan & Kurt Sroka	Thomas Turriff	Judith Wenzel & Thomas Ristow
Emily & Steve Stanley	Paul & Emily Tveite	Charles Westcott
Ron & Nancy Stein	Roy & Sandy Uelner	Carolyn & Curtis Whisman
Terry & Diane Steiner	UHG	Stanley & Jane Whiteman
Stephenson Family Fund	Aural Umhoefer	Jay & Sally Whitfield
Joyce Stevens	United Way of Door County	Jane & John Whitney
Thomas & Mary Jo Stock	Linda VandenHeuvel & Dan	Whole Growth Partners
Laurie Stockmeier	Dineen	Gary & Claire Wick
Judith Stolper & Eugene Haug	Barbara & Joe Vass	Kevin & Cindy Wienkers
Steve & Jan Stringer	Kelley & Gary Vercauteren	Thomas & Suzanne Wilkinson
Irene Strohbeen	Steven & Debbie Viktora	Gerald Willey
Jeffrey Strumberger	Philip Villasenor	Marcia Willhite
Joseph & Joanne Suchy	Theodore & Peggy von Briesen	Clyde & Marsha Williams
Robert & Rita Sullivan	Rachel & Benjamin Wagner	Cynthia Williams
John & Deanna Swanson	Andrea Wagoner & Roger Ruggeri	Howard Williamson
Janelle & Robert Swensson	Gregory Wagoner	Edward Winter
Robert & Janelle Swensson	Greg & Jodi Wait	Bob & Nancy Wise
Peter & Judy Sytsma	William Waldie	Jane & Karl Wise
Joy Szopinski & Kathleen Waters	John & Merrilee Waldron	Deneen & Lucas Wiske
Gene & Miriam Takle	Emily Walker & Rolf Hertenstein	Allen Wittenkeller
Lamont Tarbox	Jane Wall	Joan Wojtal
Jennifer Taylor	Elizabeth & Joe Wallner	William & Kathy Wolff
Laraine Taylor	Linda Walter & Raymond Drozs	Diane Wood
Richard Teets & Mary Pickett	Deirdre Watts	Kate Wulle-Dugan
Roy & Mary Thilly	Scott Weber	Jerry & Joan Zaug
John Thompson	Michael Weiland & Shelley	Dwight & Pam Zeller
Patricia Tosto	MacGregor	Diane & Fred Zimmer
Deborah Townsend	Brad & Jo Ann Weir	David Zuckerman
Robert & Mary Trainer	Jay & Kirsten Weiss	David Zuhlke & Jane McKie
True North Real Estate	Tom & Sandra Weller	William Zwicky

In Kind Contributions

Baileys Harbor Yacht Club Resort	Maxwelton Braes Golf Course	Northern Sky Theatre
Roz & Nancy Barker	Sandy & Edward Miller	Peninsula Art School of Door
Cultured	Peg & Brad Napralla	County, Inc.
Charlotte Lukes	Michael Nitsch	The Rushes
		Winebow

Land Designated

Anonymous	James & Susan Larson	Dale Schaber
Anonymous	Ruth Linnemann	Joan Schultz
Wendy Beilfuss	Sara Lubbers	Nancy & Frank Schultz
Kirsten Benidt	Katherine Luck	Marie Sieker & Rod Matthews
Corine Blasczyk	Mike & Barb Madden	Mark Sprague
Sue & Todd Bussian	Leslie McClain	Michael Steffen
Chris Cramer	Daniel Meyer & Mary Jean Kraybill	Gwen Stern
Steve Dullard	Erik Nelson	Laurie Stockmeier
Anne Epstein	Bruce & Carol Olson	William & Cheryl Surbaugh
Nancy Gajewski	Randy & Lisa Ostrem	Laraine Taylor
John Harris & Lisa Palermo	Dennis & Ann Ploor	Donna Veeneman
Ruthann Hula	Tom Poklen	Robert & Rose Wagner
Janis King	Mary Prindiville	Nancy Wenzel & Robert Bartlett
Ann Kleimola	Michael & Carole Raap	Carolyn & Curtis Whisman
Teresa Kochaver & Don Hooker	James & Carla Raatz	Sarah & Mark Woerfel
Betty Ann Kolesari	Dave & Chris Regenfuss	Laurie Yahr & Rich Kahl
Susan Kressin & James Radtke	Michael & Sandra Ruddick	Elizabeth Zimmerman
Theron Kufahl		

Range Light Designated

Mary Martha Brown	William & Catherine Hall	Maureen Sandstrom McGrath
Sherrill Eichler	Steve & Lynn Karges	Sandy & Edward Miller
Barbara & Richard Ettenger		

Research Designated

Hugh & Helena Brogan	Todd & Ann Kiefer	Joan Schultz
Andrea & Theodore Camenisch	Julie & Merritt Knox	Shelley & Larry Shea
Judi & Chris Collins	Robert & Lori Machacek	Marie Sieker & Rod Matthews
Elizabeth Daniels	Shelly & Tom Malin	Paul & Bonnie Simons
Sherrill Eichler	Robert & Sharon Meddaugh	Laurie Stockmeier
David & Carol Ewald	Edward & Sandy Miller	Lisa & Andrew Strong
Cheri Geiger	Janet & Robert Nelson	Michael & Barbara Tyree
John Harris & Lisa Palermo	David & Lori Nicholas	Sandra & Randy Vandersee
Deanna & Nathan Hertrich-Nelson	Maren Olsen	Carolyn & Curtis Whisman
Steve & Annie Hogler	Sheryll & Todd Rockway	Wisconsin Orchid Society, Inc.
Karen Jellema	Jim & Virginia Schultz	

Tributes

In Honor of Eric Grunwald

Taegan Grunwald

In Honor of Kayval Larson

Kerry Trobec

In Honor of Sara Fortune

Elizabeth Wallman

In Memory of Albert M. Fuller

Beth Tucker

In Memory of Al Eichler

Susan Becker

Sherrill Eichler

Lori Eichler-Leppen

Lisa Mendell

Clyde Williams

In Memory of Bonnie Smith

Chris James

In Memory of Bud Goodrich

Mary Jane Canman

In Memory of Dr. James Reynolds

Deborah O'Halloran

In Memory of Francha Barnard

Stephen Church

In Memory of George Fait

John O'Halloran

In Memory of Gordon Hegenbarth

D Mancuso

In Memory of Helen Schmitz

Dawn Brinker

Gayle Brinker

Lynn Fox

David Humphrey

Maria Koch

Stephen Maccaux

Kris Ragozzino

Pete Schmitz

In Memory of Jack and Jackie Charney

Paul Charney

In Memory of Jan Durr

Emma Simpkins

In Memory of Jane Weis

Judith Gaskell

Susan Siebers

In Memory of Jim Rogers

Ruth Friar

Lynn Aronson

Shelley Dale

Denise Haskamp

Alexia Higbee

Patricia Silvey

Leah Beth Simon

D. Strnad

In Memory of Karla Roth

Margaret Daugherty

Kristine Dittmar

Matt Orendorff

Gretchen Rasch

Suzanne Ridings

Karen Tosi

In Memory of Kay Domrose

Sherrill Eichler

In Memory of Larry Crock

Glen Rossman

In Memory of Larry Franklin

Barb DeMeuse

In Memory of Melinda Sheehy

William Chatfield

Arlene Johnson

Robert Kinosian

Jim Matthes

Mark Polczynski

Christopher Smithka

Kate & Doug Spak

Shelagh Watson

In Memory of Nancy Ney

Scott Ney

In Memory of Neil Luebke

Susan Cubar

In Memory of Paul Preston & Tim Lukaszewski

Jill Strachan

In Memory of Robert Nichols

Barbara Anklam

In Memory of Russell Sunstrom

Meadows of Scandia Village
Assoc

In Memory of Tim Lukaszewski

Jill Strachan

In Memory Of Susan Hegenbarth

Gloria Drummond
Val Kestner
Sally Malm
Irene Walsh

In Memory of Tom Amberg

Judith Amberg

**In Tribute to Andrea for her
Involvement and Enjoyment in
The Ridges**

Gregory Wagoner

In Tribute to Bill & Kathy Wolff

Tom Wolff

**In Tribute to our parents, Keith
and Stacey McKendry, for their
birthdays.**

Meghan McKendry

General Membership

A2Z The Agency
Bob & Susie Abegg
Mary Ackermann
Diane Adams
Tim & Michelle Adensam
Mary & Tom Afflerbach
Karen Alesch & Diane Dushenski
James Alexander
Sharon Alexander
George & Mary Allie
Thomas & Susan Alt
Anne Altshuler
Tom & Mary Altstiel
Helen Ambuel
Vicki Amundson
Anchored Roots Vineyard & Winery
Ivar Anderson
Nick & Gail Anderson
Richard & Janet Anderson
Roy & Dawn Anderson
Sharon Anderson
Robert & Dona Anderson
Stefan & Joan Anderson
Brent Anderson
Linda Anderson
Susan Anderson
Gilbert Ankenbauer
Anschutz Plumbing & Heating Inc
Corrine & Jim Anshus
Lynn & William Antholine

Bruce & Jane Arduser
Nancy Armbrust
Nancy Aten
Jeff & Allison Attoe
Edward Augustine Jr.
Caroline & Doug Ault
Bridget & Gary Austin
Bacon CPA, LLC
Bruce Bahrmassel & Catherine Struzynski
Baileys Harbor Community Association
Baileys Harbor Fish Company
Baileys Harbor Yacht Club Resort
Baileys on the Rocks Cottages
Kelly Ball
Linda Ballard
John & Jennifer Barnes
David Barnes
Tom & Diane Barounis
Jean Barrett & Paul Neuman
Harriett Barrett
Richard & Mary Basham
Janneke Baske
Gordon Bass
Susan & Lee Basten
William & Linda Bauer
Emil Baukert
James Baumann
Bay Point Inn
Abby Bayatpour

Beachfront Inn
Paul & Brenda Beck
Pam & Jim Beck
Barbara Becker & Bob Glaser
Caroline Beckett
Tom & Penny Beerntsen
Jon & Kathy Beggs
Annie Beier
Wendy Beilfuss
Mary & David Bell
Holly Bender
Kirsten Benidt
Neil & Patricia Benson
Kim & Janet Berard
Vic & Ann Berardi
Judy & Richard Berger
William and Mary Bestor
Janis Bice
Faye & Edward Binsfeld
Tom & Linda Birmingham
Gene & Patricia Bitterberg
Jim & Patricia Black
Margaret & Charles Black
Bob & Kay Blackburn
Blacksmith Inn On the Shore
Patricia & James Blair
Jody & Greg Bleck
Cheryl Bliss
Phil & Cindy Block
Michael & Lucy Bloedorn

Bluegrass Readiness, Inc.	Rob Calia	Dennis & Bonnie Connolly
Paul & Cynthia Board	Bruce & Cassandra Callow	Ellen Connor
Andrea Boehmer	Gregg Calpino	Peter & Beverly Ann Conroy
Kendra Bonderud & Kenneth Parsons	Andrea & Theodore Camenisch	Patricia Conway
Jocelyn Boor	Sharon & Richard Canter	Susan Cook and Karyn Graham
Kirby & Paul Bouthilet	Cyndi Cantwell	Janis Cooper
Daniel & Melissa Bowman	Cappaert Contemporary Gallery	Terrie Cooper
Jerry Boyd	Bridget & Dan Carlson	John & Mary Corriveau
McKim & Lisa Boyd	Patricia & Scott Carlson	Julia & Michael Cosgrove
Nancy Boyd	Richard Carlson	Howard & Susan Cosgrove
Sue & Ken Boyer	Susan & David Carlson	Lorna & Greg Cote
Jay & Patty Boyer	Sally & Chuck Carpenter	Emilie Coulson-Salgado
Laurel Braatz	James Cauley & Brenda Andrews	Robyn & Brent Couperus
Laura & Bryan Bradley	Cedar Beach House/Inn	Bruce Covich
Allyn Braun	Stuart & Deborah Chadde	Elissa & Jonathan Coyer
Gary & Kathleen	Sarah Chambers	Evan Craig & Paula Beik
Brendemuehl	Kristen Charlson	Tina Crave
Carol Breuch	Barbara Charly	Cynthia Crock
Kathy Breunig	Lauren & Margaret Charous	Betty & Larry Cross
Heidi Bridenhagen	Bill & Linda Check	Susan Cubar & Thomas Jordan
Bridenhagen Tree & Landscape, Inc.	Trudy & Tony Chelmecki	Cultured
Mike & Judy Brodd	Terri & Mark Chelmowski	James & Lisa Cummings
Brigid & Jim Brooks	Robert & Alice Chrismer	William & Lou Ann Curry
Linda Brooks	Beth Churchill & Stephen Schmid	William Curry
Michael & Debra Brophy	Elly & Timothy Chybowski	Mitch & Sandie Custer
Lesley Brotkowski	Nancy Ciezki	Donna Danielson
Richard Brown	Tom Cinealis	Sara & Steven Dankle
David & Mary Jane Brukardt	Krista Clarke-Brownstein & Michael Brownstein	Robert Davis III
Patricia Brunmeier	Peter & Barbara Classen	Jean Davison
Lynn Brunsen	Susan Clayson	Gillian Dawson
Andrew Bryant	Karen & Rowan Clifford VanHaren	William Dean
Ellen Bryant	George Cobb	Laura & Stephen DeGuire
David & Patricia Buck	Dave Cocagne	Susan & Ralph Demick
Ruth & Peter Budic	Dan Collins	Merry Kris & Kenneth Demske
Donna & Steve Bultman	Judi & Chris Collins	Sarah DeNamur
Andrea & Carl Bumpurs	Robert Collins	Tony & Donna DeNardo
Amy & Reed Burke	Mike & Lynn Collom	Mary Denig & Robert Wahlers
Gregory Burns	Jane Comiskey	Sally Dery
Linda Busha	Andrea & Terry Connelly	Details Hair Innovations

Lisa Dew & John VanderBloemen	Tom & Phyllis Eckhart	Anthony & Cathy Fiorato
Dan Dexter	Anne & Richard Egan	Debbie & Ron Fischer
Karen & Jeff Dickmann	Patricia & James Eggers	Jeff & Amy Fischer
Jay & Nancy Dickson	Carl Eisenberg	Debra Fitzgerald
Paul Didion & Yvonne Bellay	Craig Elderkin	Nora Flood
Daniel & Diane Dieterich	Tom & Victoria Eley	Russ & Linda Forbess
James Differding & James Dickes	Michael Elkow	Pat & Diane Ford
Lisa Dimberg	Mary Ellestad	Joan Fordham
Richard & Sandra Dirks	Jeff and Sonia Elser	Thomas Forkenbrock
Catherine Ditto	Mark Emmerling	Jim & Janet Foster
Steven Domiano & Stephanie	Bill & Arlene Engler	Mary & Richard Foster
Rens-Domiano	Claire & John English	Colleen Francis
Rebecca & Paul Dominik	Peggy Enquist	Doug & GG Franklin
Nancy Donaldson	Bill & Pat Ensing	Elizabeth Franklin
Dale & Dawn Doney	Nicholas & Jennifer Epley	Mark Frankowski & Catherine
Door County Ice Cream Factory	Anne Epstein	Meyer
Michael Dorfman	Karen Erickson	Ellen & Troy Fredrich
Maureen Dorn	Tom & Andrea Esau	Nancy Freeman & Jim Wallace
Shawn & Cyndi Dorsey	Dale Eskra	George & Bernie Freeman
Christine Double	David & Carol Ewald	Melanie Freisinger
Charles & Rita Doyle	Jeff Ewald	Lee Frelich
Mike & Kristen Doyle	Marianne Ewig	Sarah & Bill Freyman
Ms. Catherine Doyle	Jessica & Jacob Exline	Tom & Laurie Friedrich
Don & Jane Drees	Jessica & Paul Fagan	Vicki & Tim Friske
Judy Drew	Laurie Fallucca	Claire Fritsche & David Olson
Jane Drury & Russ Amos	Lisa Farran	Philip Frystak
Marc & Kris Dubick	Linda & Larry Fass	Barbara Fuhrmann
David & Christine Duecker	Linda Faust	Marsella & Tim Fults
Susan & George Dugan	Maureen Fear	Linda & Doug Fyfe
Steve Dullard	Sue Fedenia & Jeff Stanley	Gary Gabrielsen
Debra DuMont & Claire CaJacob	Barbara & Bill Feeney	James & JoAnn Gallen
Bob & Mary Dunworth	Donald Feilbach	Jac & Edith Garner
Charles & Sonja Durkee	Megan Fellman	Karen & Ira Gaston
Richard & Janet Durr	Bruce & Chris Fenner	Stephen & Aimee Gauger
Yvonne Dwonch	Ken & Beth Ferris	Conor & Rebecca Gee
Amy Dwyer	Barbara Ferry	Cheri Geiger
Bill Ebbott & Nancy Paul	Carrol Fibich	Gil & Lynn Gerdman
Cindy & Tim Eberhardy	William & Mary Figeas	Patrick Gerick
Scott & Marcia Eckdahl	Jack & Diane Finger	Chuck & Faye Germain
Joni & Gary Ecke	Richard Finger	Dorothy Gerrits

John Gesme	Larry Gross	Dick & Donna Hartvigsen
Laura Gevik	Tammie Grossman & David	James & Becky Haselton
Carolyn & Doug Giannunzio	Wolowitz	Rita Hassert
Lisa Gideon	Frank Gruba-McCallister	Mick & Lisa Hatch
Julie Gilbert	Gary Gruenisen	Eugene Haug & Judith
Joan & Gene Gilbertson	Beth Gullickson & David Nelson	Stolper
Dennis & Janis Gill	Don & Joyanne Gustafson	Richard & Carrie Hauser
Larry & Darcy Gill	Paula & James Habschmidt	Rebecca Hawker
Bruce & Marta Gillilan	Laurie & Nari Haig	Nancy Hawkins
Kathy & Bill Gilmore	Diane Haldane	Bob Hawley
George Gissell	Jack & Susan Hale	Amy Healey
Linda & Mark Glasser	Susan Halfmann	Bill Hebal
Margaret Glatz	David & Nancy Hall	Michelle Hefty & Joe Burrese
Mardi & William Glenn	Melissa and Todd Halperin	James & Susan Heiden
Edward & Kathleen Glover	Tara & Jim Halstead	Jean & Robert Heidt
Betsy Gmitro	Cheryl Halverson & Peter Alex	Pam & Craig Heilman
Mark Gnabasik	Paul & Gloria Halverson	Marilyn Hein
Lauren Goecks	Nancy Hammen	Bruce Heling
Daniel Goetschel & Barbara Loeb	Kathryn Hammes	Kenneth Heller
Adam Goettelman	Holly & Kevin Hampson	Rebecca & Stephen Heller
Janis Goetz	Steve & Peggy Handrich	Lisa & Tom Hendrix
Barbara & Larry Goldberg	David & Terri Hanke	Mel & Mary Hendrix
Thomas & Gail Goletz	Catherine & T.J. Hankerson	Jean & Robert Henke
Linae & Jay Golla	Nancy Hanks	Ellen Henningsen
Tom Gomoll	Jill & Pete Hanley	Fred Henry
Dale & Mary Goodner	Biff & Sheila Hansen	Jeff & Patty Henry
Kay Goodwin	Ellie & Mark Hansen	Lisa Hermann
Fawn Gottschalk	Steven & Maureen Hansen	John Hermanson
MaryJane & John Grabowski	Elizabeth Hansen	Gianna Hernandez
Greg & Janis Gralewski	Lee Hansen	Nita Herreman
William & Donna Granger	Barbara & Doug Hanson	Lawrence & Joanne Hersam
Grasse's Grill	Wayne & Janet Hanson	Deanna & Nathan Hertrich-Nelson
Andrew & Louise Green	Lindsay Hanson	Mary Heveran
Melissa & Jason Gregory	Marilyn Hansotia	Stephen Hey
Mike Grimm	Harbor Fish Market & Grille	Jeff & Pat Hickey
Peter Grimyser	Arnelle & Thomas Hardy	Kenneth Hilbig-Ross
David & Marleah Grinnell	George & Judy Harmon	David & Jean Hildreth
Priscilla Grittner	John Harris & Lisa Palermo	Rian Hill
Jan Groen	Kate Harris	Alan & Sharon Hillard
Todd Gronholz	Katie & Brad Hartmann	Allan Hins

Judy Hoard & Beth Ringgenberg	Don & Susan Jauquet	Ken & Laurel Karlo
David Hoel	Karen Jellema	Craig Katz & Kafryn Lieder
Brady & Jennifer Hoes	James & Marcy Jennings	Barbara Keating
Rose & Mike Hoffa	Brian & Barb Jensen	Krista Keck
Michael Hoffmann	Margaret Jensen-Heth & Frederick Heth	Sabrina Keck
Steve & Annie Hogler	Jane & Jim Jerzak	John Keene
Rana & Will Holbrook	Karen Jewell-van Buskirk	Barbara & Charles Keller
Ron & Alice Holden	Missie & Brian Jilot	Thomas & Lynn Keller
Victoria Holderer	Mark & Ann Jinkins	Jack & Carrie Kelly
Sarah Hole	Michael Johann	Thomas & Shirley Kenney
Mark & Michaela Holey	Sheena John	Jim & Phoebe Kent
David & Rosann Hollinger	Ann & Michael Johnson	Raymond & Mary Kent
William Hollis	Arlene Johnson	Marguerite Keys
Barbara & David Holman	Gary Johnson	Joseph & Kitty Keyser
Dawn Holsen	Sandra & Richard Johnson	John & Morgan Kiedrowski
Annie Homsy-Harris	Albert Johnson	Jone & Kurt Kiefer
Robert & Lisa Honig	Bruce & Sue Johnson	Todd & Ann Kiefer
Mary Horton	Chris & Julie Johnson	Catherine Kilcoyne
Hal & Joyce Hothan	Mark Johnson	Becky & Dave Kimbell
Linda & Peter Hotz	Veronica Johnston	Charles Kimbell
Lesley & Gary Houchin-Miller	Jon & Sally Jonas	Mike Kinde
Paul & Linda Houdek	Elizabeth & Scott Jonas	Kindgoods
Eric Howe & Kristin Wegner	Gary & Debbie Jones	Jim Kinney
Bill & Melanie Howe	Rosemary & Lee Jones	Robert & Sue Kinosian
David & Juliana Hubbard	Cheryl Jones	Ryan & Kathleen Kirk
Judi & John Hundley	Barbara Juckem-Nelson & Donald Nelson	Bonnie & Michael Klassy
Aimee & Tom Huntsha	Jacqueline Judd & Michael Shulman	Herbert & Linda Kleisch
Amy & John Hurckman	Mike Jury	David & Kathy Klika
John Hutchinson	Michele & Wade Juza	Barbara & Bruce Klingman
Glenn & Dorothy Huth	Judith & David Kaiser	Michael & Martha Klinker
Kenneth & Mary Ingles	Judith Kalb	Marilyn & Donald Kloth
Innovative Printing LLC	Richard Kanas & Linda Moore	Lucy Klug
Alfred Jackson	Terrance & Judith Kane	Patrick & Kris Knapp
Judith Jackson	Tim Kannenberg	Jim & Tallya Knippen
Barbara & John Jacobs	Jonathan Kanter	Janet & Karl Knock
Christopher Jacobs	John Kanthack	Richard Knowles
Mary Beth & Barry James	Judith & Thomas Kapellen	Bev Knutson
Carol Janossy		Teresa Kochaver & Don Hooker
Joe & Sue Jarosh		Ron & Mary Koehler

Bill & Jo Koehler	Lake Fire Winery	Sue & Jim Longo
Chris Koenig	Holly LaMantia	Margaret Lott
Janet Koestring & John Kupper	Karen Lambeck	Theresa & Petr Lovasik
Kevin & Carolyn Kolasinski	Linda Lambert	Laura & Bob Love
Linda Kolberg	Laura & Maia Landergott	Lisa-Beth & Scott Lovero
Betty Ann Kolesari	Diane Lang	Sara Lubbers
Nolan Kollath & Cindy Spankowski	Ed & Mary Langbein	Katherine Luck
Darlene Kolp	Don & Jan Lanik	Karen Ludvigsen
Darlene Konkle	Brian & Sue Lanser	Heidi Luebke
Steven & Kelly Konkol	Cynthia & Loren Larsen	Sherry & Richard Lundell
Jane Korest	Kayval & Donald Larson	Christopher Lundh
Joe Korn	Sara Latreille	Barbara Lundquist
Don Korte	Perianne Laux	Tom & Charli Lundstedt
Jann & Keith Kostecke	Lisa & Dan LaVoie	Rachel Lurie
Tom & Cindy Kraack	Emily Lawent	Matthew & Melissa Lutsey
Thomas & Margie Krauskopf	Marge Layde	Lisa & Steve Lyons
Emily & Robert Kraynak	Bill & Cheryl Lee	Robert & Lori Machacek
Ray Kremer	Mark Lee	Jan MacLeod
Gary & Carol Kreml	Sue & Bob LeGault	Caitlin Macomber
Susan Kressin & James Radtke	Jason & Jennifer Legois	Erin Mader
Steve & Margaret Krings	Diane Lembck	Dianne Maginot
Lori Kroening	Keith Lemburg	Emily Maher
James Kron	Judith Leonard	Elizabeth & Mike Mahoney
Thomas Krueger	Cynthia Lepkowski	James & Gail Mahoney
John & Karen Kruger	Maureen & Sean Leuba	Main Street Market
Don & Brigid Krutek	Sara Levins	Jan & Lynn Malchow
Paul Kruty	John Lewis	Shelly & Tom Malin
Steve & Marsha Krzyzanowski	Joe Lewis	Kristin Malnory
Patrick & Sue Kubley	Mary Beth Lewis	Malone's Plumbing & Heating
Wayne & Julie Kudick	Door County Library	Laura & Kevin Maloney
Jude & Paul Kuenn	John & Laura Lijewski	Lisa Manges
Kerry Kuenzi	Meredith & Richard Lincoln	Colette Marcetich-Biltz & George Biltz
Lawrie & Mary Kull	Dana Lindh	Jon & Marjorie Margolies
Lee & Eileen Kummer	David & Caroline Link	Keith Marquardt
Michael Kumpf	Carolyn & Eldon Linnebur	Helen & Gary Martin
James & Becki Kurtz	Paul & Jan Liss	Kate & Jason Martin
Jim & Diane Kuzma	Jill Littlefield	Pamela Martin
Lilli Kuzma	Susan Livengood	Antonio & Demaris Martinez
James Labiak	Jeff & Mary Logic	Norma Matejka
Cynthia LaConte	Ronald & Judy Lokken	

Randy & Karen Mathewson	Carl Meyer	John Nelson
Martin Mathias	Julia & Bill Meyers	Gail & David Nelson
Ken Mathys	Elizabeth Mezera	Sandra & Dennis Nelson
Jim & Mary Lee Matthes	Ray & Mickey Mickevicius	Jackie Nelson
David & Marjorie Mau	Jim & Peg Middendorf	Dee & Ron Netzel
Lois & Ron Mauermann	Jim Miller	Curt & Patricia Neudecker
Jennifer Maurer	Anne Miller	David Neuman
Jill & Bradley Maxfield	Judith Miller	Michael Neuman
Maxwell's House	Lori & John Miron	Patrick Neuman
Maxwelton Braes Golf Course	Rosaleen Miskella	Joyce Neville
Maxwelton Braes Lodge	Laura & Pete Moegenburg	Martha Newkirk
Irene Mayer	Robert & Carol Moellenberndt	Michael & Gayla Newmeister
Terry & Ally McArdle	Wayne & Barbara Mohr	John & Marianne Newton
Kim McArdle	Larry & Janet Mohr	Scott Ney
Andrea McAuliffe	Bill & Sandy Moore	Nancy Nicholas
Paul & Maureen McBroom	Sue Moore & Chuck Czaplewski	Ashley & James Nick
Leslie McClain	Susan Moore & Pat Kiley	Nicolet National Bank
Mary McCormack	Bill & Pat Moren	Dan & Penny Niesen
Sharon & Robert McCoy	Barbara Morgan & Deanna	Maryanne Niesen
Robert McCullough & Karen Tosi	D'Abbraccio	Richard & Ann Nikchevich
Karen McDonald	Ann & Michael Morgan	Kathleen Noel
Marilyn McDonald	Lin Morgan	Lisa & Greg Nollin
Carol McDonough & Tom	Kevin Morrill	Steven Nooyen
Notermann	Michael & Jolene Morris	Paula Nordeen
David & Colette McDonough	Nancy Morris	Janis Norem
Thomas McElligott	Larry Morrison	Allen & Marcia Nottke
James & Susan McFeggan	Kevin & Kate Moss	Peter & Sheila Nottleson
Donna McGreal & Robert Clemens	Mary Moster	Joe & Judy Novicki
Pat & Andy McIntosh-Oles	Sarah & Brad Motl	Tony & Darlene Nowak
Mike & Carol McIntyre	Christine & Ed Movall	James & Jean Nye
Stacey & Keith McKendry	Laura Rose & Grant Mueller-	John & Christina O'Boyle
Rick & Joan McLaughlin	Schueneman	Phoebe O'Connell
Peter & Laura McLeod	Julia & Peter Murphy	John & Bonnie O'Donnell
Marcy & Bruce McNitt	Lincoln Murphy	Paula Oeler & Dave Tilton
Robert & Sharon Meddaugh	Mark & Laurie Murphy	Tom & Mary O'Grady
Paul & Danita Medved	Mary Ellen Murray & Dan Abata	Diana & Gerald Ogren
Diane & Roger Meiborg	Walter & Elaine Naleway	Mike & Mary Ohm
Meissner Landscape, Inc.	Sara Naureckas	Douglas O'Leary
Joseph Melendes	Jerold Needelman	Mark & Germaine Olm
Debra & Stiles Meredith	Shawn & Maxine Nehmer	John Olsan
Robert & Linda Merline	Janet & Robert Nelson	

Bruce & Carol Olson	Amy Peterson	Donna Recht
Jerry & Patricia Olson	Ellen & Mark Peterson	Ralph & Donna Redlin
Tom & Ginny Olson	Harry & Sylvia Peterson	Dan & Kim Redman
Brian & Debbie O'Mara	Jessica Phelps	Linda Reed
Orchards Golf Course	John & Eileen Phetteplace	Nancy Reeder
Peter Orlik	Ken & Ann Phillips	Tom & Carolyn Rehberger
Jeffery & Nancy Ortinau	Ann & Richard Piehl	Sue Reindollar
Frank Orto	Patricia Pierce	Kirsten Reitan
Mark Osinski	John & Cynthia Pierson	Alan & Jane Rentmeester
Raymond & Carol Ann Osinski	Piggly Wiggly	Colleen & Edward Reshel
Erik Ost & Paige Witek	Mary Pikul Anderson	Richard & Barbara Reynolds
Randy & Lisa Ostrem	Pinkert Law Firm LLP	Sheila Reynolds
Barb & Jeff Ottum	Catherine & David Piotrowski	Steve & Fran Richman
Sandra Owens	Leonard Place	Kathy & Paul Riederer
Jessica Palm	Mike & Angie Plambeck	Mark & Cathy Ring
Frank & Kathy Pammer	Joe & Kathy Polacheck	Donna Rippin
Karen Pangborn	Cyndi Polakowski	Barbara & Paul Ristau
Secelie & Tyler Panske	Stephen & Caroline Polster	Ellen & Norbert Ritt
Kathy Papineau	Susan Poludniak	Ruth Ritter
Domingo & Ann Parada	Rex & Linda Pope	Dave & Barbara Robinson
Katherine Parkinson	Mitch & Kari Poppen	Todd & Sheryll Rockway
Alan Parks and Lynn Pierce	Ed & Holly Porrett	Carla Roden
Lissa & Keith Parr	Rose Powers	Marc & Becky Roehl
Virginia Parsons	Ashley Prange	Haley Rohr & Fritz Eckstrom
Sanjeev & Megan Patel	Chuck & Diane Pribbernow	David Roisum
Patricia Shoppe Ltd.	Sue Priebe	Patricia Rom & Glenn Paustian
Annika Paulsen	Mary Prindiville	John & Bridget Rooks
Ameya Pawar	Kristopher & Sarah Purzycki	John & Mary Rooks
Greg & Julie Pawlak	Julie Putman & Michael Yonkers	Rick & Dianne Rose
Kay Pearson	Susan & Randy Putnam	Adam Rosenstein
Duska & Scott Pearson	Quantum Technologies	Alan & Carol Rosenthal
Kathy & Mike Pelto	James & Carla Raatz	Becky Rosenthal
Peninsula State Park Golf Course	Ken & Marilyn Rabideau	Deborah Rosenthal
Edwin Pentecost	Debra Rade	Lynn Rosinsky & Thomas Meyering
Barbara & David Perkins	Karen Raedel	Robert & Cynthia Ross
Judy Perkins and David Keen	Raibrook Foundation, Inc.	Glen & Grace Rossman
Tawnie Perkovich	Joe & Marie Rakoczy	Rotary Club of Door County North
Frank & Deborah Perrino	Tim Rand	Stephen Rothe
Bob & Cathy Pestka	Sharon Rasmusson	Mary Rotheray
Henry Peters	Patty Ray	James & LaDona Rowings

Eugene Rubin	Mike and Cindy Schneider	Tricia Shinnors
Michael & Sandra Ruddick	Robin & Greg Schneider	Shoreline Boat Tours
Patricia Rudolph	Rebecca Schoell	Gregory & Joyce Short
Susan & Mark Rudzinski	JR Schoenfeld	Mark & JoAnn Shropshire
John & Ann Ruetz	Margaret & Timothy Schoewe	Karen Shumway
Morgan Rusnak	Jane Scholz-Raben & David Raben	Ross & Ginny Siegel
Dorothy Russell	Thomas & Susan Schouten	Marie Sieker & Rod Matthews
Jean Russell	Tom Schrader	Carl & Lori Sieracki
Chuck & Jean Ruth	Ed & Barb Schriener-Schmitt	Sid & Carol Simmons
Ed Sadowski	Charles & Karen Schudson	Jack & Barbara Simon
Rose Sage	Tom & Mac Schueppert	Paul & Bonnie Simons
Mick & Marilyn Sagrillo	Martha & Michael Schulkins	Laura Simpson
Chuck & Christine Salisbury	Craig & Sandy Schultz	Kenneth Singer
Kathryn & Michael Sama	Frank & Nancy Schultz	Sister Bay Bowl
Mary & Peter Sandberg	Jim & Virginia Schultz	Jeff & Barbara Skiles
Marie & Bob Sander	Michael Schultz	John & Pat Skogsbakken
Sharon Sanderson	Philip & Melissa Schultz	Jeanne Skoug
Charles Sandine	Penny Schultz	Richard & Mary Slavik
Kristine Sandrick	Beverly & Gary Schulze	Cora Sledge
Eric & Stacie Sandvig	Carol & Luke Schumacher	Andy & Margaret Slupecki
Lynda Sanford & Gary Packard	Paul & Deborah Schumacher	Laura Slusarski
Barry & Judy Sargent	Carol Schuster	Jim & Lori Smasal
Ed & Sara Sarna	William Schuster	Bruce & Pamela Smith
Dianne & Gordon Saron	Barbara & Jerry Schutt	Holly Smith & Larry Gales
Mark & Jane Savides	Joicelyn & Jeff Schwager	Patricia & Stephen Smith
William & Mary Jo Schaars	Andrew & Sarah Schwalbe	Steven & Bonnie Smith
Rick Schaefer	Judy Schwengel	Jeanne Smith
Amanda & Mike Schaeffer	Carol Scott	Christopher Smithka
Samantha & Dan Scheiman	Richard Scott	Michael & Elizabeth Sodic
Terry Schenck	Diana & Norbert Scribner	Stephen & Anda Sokalski
Clarence & Mary Anne Scherer	Linda Seaquist	Robert & Joanne Solem
Phyllis Schippers & Timothy	Mary Seeberg	Roberta & Steve Sparenberg
Maatman	Jane & Dan Seidl	Paul & Katie Sparks
Jackie & James Schira	Tina Seniuk	Marlys Sperger
Kenneth & Virginia Schlichter	Katherine Severson	Mary Spittell
Nancy Schmidt	Cindy & Steve Shallock	Judy & John Spitzley
Betsy & DonSchmitt	Shelley & Larry Shea	Mary Ellen & Bob Spoerke
David & Pamela Schmitz	Bryon Shea	Anthony & Lynda Spoo
Rebecca Schnaedter	Michael Sheets & Catherine Fox	Wayne & Christine Sportsman
Joan & Michael Schneider	Alan Shepard	Mark Sprague

Mark Spreitzer	Frank & Kathy Szatkowski	Dixie Tubbs
John & Jill Spude	Chuck & Donna Szoke	Arlie & Mary Tucker
Tim Spurgin & Gretchen Revie	Randy & Beth Tacey	Liz Tuma & John Peter
Marie Squire	Miriam & Gene Takle	Thomas Turriff
David & Sara Stanley	Lamont Tarbox	Michael & Barbara Tyree
Emily & Steve Stanley	Joann Tarczewski	Barbara & Richard Untch
Michelle & Alex Stauber	Jennifer Taylor	Stephen Urbrock
Randel Steele & Margaret Gonzales	Laraine Taylor	John Van den Brandt
Karen & Stephen Steen	Gail & Michael Teague	Karin Van Duyse
Ron & Nancy Stein	Jeremy & Megan Tepe	Gail Van Haren
Susan Steinbrueck	The Boldt Company	Sandra & Randy Vandersee
Terry & Diane Steiner	The Rushes	Vince Varone
Carole & James Stephens	The Thirsty Cow Taphouse	Barbara & Joe Vass
Mary Stevens	Roberta & Peter Thelen	Kathleen Vaught
Ronald & Bev Stieglitz	Roy & Mary Thilly	Lee Vermilyea
Laurie Stockmeier	Marcelyn Thobaben	Louise & Robert VerWert
Stacey & David Stoehr	Mark & Daria Thomas	Gregory & Wendy Vichick
Sandra Stoneham	Thomas John Thomas and Candice Maynard	Steven & Debbie Viktora
Scott & Holly Stoner	Earl Thompson	Philip Villasenor
Raymond & Linda Stoppenbach	Michelle & Scott Thompson	Dennis Voight
Carol & Charles Stout	Linda & David Thompson	James & Terri Vopat
Thomas Stram	Cynthia Thorpe & Dennis Kavanaugh	Allison Vroman & Jonathan Parsons
Jon & Wendy Strauch-Nelson	Thyme Resturant and Catering	Chris & Steve Vuco
Steve & Jan Stringer	Judi Tilghman	Sue & Art Vyse
Irene Strohbeen	Carol Tishler	Diane Wachdorf
William & Beth Strotman	Jeffrey & Joni Todd	Patricia Wafer
Lisa Stukenberg	Justin Tolomeo	Anneliese Waggoner
Rich & Jenni Stultz	Jane Tomich	Rachel & Benjamin Wagner
Monica Suemnicht	Patricia Tosto	Shawn Wagner
Maury & Ann Sullivan	Susan Toth	Kurt & Mary Grace Wagner
Kate Sullivan	Leigh Tracy	Gregory Wagoner
Robert & Rita Sullivan	Robert & Mary Trainer	Greg & Jodi Wait
William & Cheryl Surbaugh	Alex Tretinyak	Ron Wajer
Ellen Sushak	Joel & Patricia Trick	Sharon Walchessen
Tim & Lisa Sutton	John Trilling & Rita O'Donnell	Andreas Waldburg Wolfegg
Gerry & Micky Swanson	Nancy & Joe Trimberger	William Waldie
Robert & Janelle Swensson	William & Madelynn Trost	John & Merrilee Waldron
Margaret Sylvester	Betsy Trowbridge	Emily Walker & Rolf Hertenstein
Peter & Judy Sytsma		Carol Wall
John & Martin Syvertsen		

Jane Wall	Gary & Claire Wick	George Wittler
Carl & Darcy Wallace	James Wickesberg	Sheryl & Roger Woehl
Joe & Elizabeth Wallner	Debbie & David Wickman	Carol Woerfel
Linda Walter & Raymond Drozs	Joe Wiedenmeier	Terry Wolf
Ken Wardius	Tim & Cathy Wiegman	William & Kathy Wolff
Deirdre Watts	JoAnn & Michael Wielosinski	Rich & Cindy Wolter
David & Sally Weber	Gail & W.T. Wiley	David Wood and Jane Doughty
Scott Weber	Joan Wilk	Sara Woolery
Evan & Lurana Webster	Gerald Willey	Mary & Joel Woznicki
Brad & Jo Ann Weir	Marcia Willhite	Chris Wren & Susan Becker
Jay & Kirsten Weiss	Caitlin Williamson	Lynda Wright
Mark & Patty Weisse	Howard Williamson	Dorothy Wyandt
Tom & Sandra Weller	Margo & Kurt Willmann	Jim and Candy Yonker
Nancy Wenzel & Robert Bartlett	Amy Wilquet Swette & David Swette	Mari-Jo Young
Judith Wenzel & Thomas Ristow	Dennis & Jean Wilson	Kris & Jennifer Youngsteadt
Wessels & Liebau LLC	Misha & Heidi Wilson	Catherine Yurk
Charles Westcott	Barbara & Tom Wilson	Sarah Zaug
Dave & Liz Westen	Jeremy & Mary Jane Wilson	Joan Zaug
Joni & Thomas Westenberger	Erica & Matt Wiltermuth	Laura Zawadzki
Sharon & David Wester	Barbara Winter	Brent Zeinert
Peter & Marie Westergard	Edward Winter	Dwight & Pam Zeller
Kathy Westover	Catherine Wirtas	Elizabeth Ziegler
Megan & Shane Wheeler	Robert & Therese Wis	John & Peggy Zimdars
Carolyn & Curtis Whisman	Bob & Nancy Wise	Tom Zimmerman
Adam White	Jane & Karl Wise	Paul & Barb Zoschke
Sarah & Jason White	Deneen & Lucas Wiske	David Zuckerman
White Gull Inn	Lynda & George Withbroe	David Zuhlke & Jane McKie
Stanley & Jane Whiteman	Carmen & Gene Witt	William Zwicky
Jay & Sally Whitfield		Sarah Zwiefelhofer
Jane & John Whitney		

Lifetime Membership

Eugene Abraham	Eula Anderson	Eric Aynsley
Fred & Cynthia Acker	Robert & Dorothy Anderson	Inge Alverson Bacon
Edmund Adamic	Stephen Anderson	Karl Bahr
Betty Alexander	Dan & Marjorie Andrae	James Baker
Virginia Amen	Judy Appel	Jane Balcer
Roy & Mary Ames	Patricia Armstrong	Anne Baldwin
Heather Andersen	Gaetano & Amanda Auricchio	Harry Banzhaf
Betty Anderson	Pietro, Federrico, & Giuliano Auricchio	Richard Barry

Rudolph & Marilyn Barta
Wilbert Bartelt
Earl Bauby
Lillian Baumgaertner
Paul Baumgaertner
Doris Baumgartner
Jon Beadell
Anita Been
Allan Bell
Hugh Bell
Mary Bellin
William Beringer
John Best
Carol Bielefeldt
Harry Bierma
Vlasta Blaha
Rhonda Bliss
Josephine Blue
Kelly Boettcher
Charlotte Booth
Carol & Kenneth Boyd
John & Norma Bramsen
William Brann
Anthony Bryant
John Bryngelson
John Bubolz
Donald Buchholz
Barbara Buckingham
Daulton Buckingham
Dennis Buckingham
Donald Lee Buckingham
Lynn Budzak
Denise & William Buenzli
Ted & Judy Buenzli
Ann Burgess
Evelyn Burnidge
Charlotte Burr
Frances Burton
Michael Burton
Josh & Ruth Buss

Virginia Calhoun
R. David & LaVonne Callsen
Gilbert & Joyce Carlson
Juanita Carlson
Charlotte Carnot
Julie & John Carpenter
Karen Case
Janet Change
Beth Chapman
Susan Charles
Phillida Charly
Jeanne Chase
David Chomeau
William Cisewski
Carl Cochrane
Pauline Collins
Helen Conlon
Sucheta Connolly
Scott Cook
Sharon Cook Fahrney
Signe Cooper
Jane Cordon
Andrew Coulson
Jennifer Course
Emma & Conner Cowling
Chris Cramer
Corlita Cramer
Susan Crawford & Jeff Rosemann
Elisabeth Creutz
Paul Crittenden
Karen & John Crotty
Trissa Crowley
Robert Curley
Hugh Davis
John & Cheryl Dawson
J. Dearholt
Christi Decker
Gordon Delsart
Gladys Delvoye
Moiria Desch

Donald Detmer
Thomas and Rose Detmer
John Devlin
Charles Dickson
Marianne & Don Diekman
Dorothy & Robert Dieter
Daniel & Linda Dilts
Sam Dimaggio
June Dittl
Michael Doerr
Michael Doran
Anna Doudlah
Gloria Drummond
Maxine Du Puis
Greg Dziadosz
Angela Ebzery
James Eggener
Sherrill Eichler
Kathryn Elliott
William Emerson
Dale Engstrom
Thomas Erdman
Miriam Erickson
Barbara & James Erlenborn
Suzanne Eschenbach
Beth & Kevin Farrell
Susan Farrell
Robert Fellman
Jessie Fiedler
Kenne Findley
Gail Fischer
Judith Fischer
Ellen Folsom
Roberta Foote
Christopher & Sara Fortune
Heather Fortune
James Fosdick
Janette Franke
Janet Frederiksen
David French

James & Iris Friedlieb	Willard & Mary Hartman	Raymond & Jeanine Jasica
Bruce & Grace Frudden	Bob Hastings	Julie Jasica-Mercola
Kerry & Deborah Frumkin	William Heckrodt	Benson Jewell
John Fulkerson	Robert Heerens	Elizabeth John
Wendy Gaeding	Coggin & Don Heeringa	Donald Johnson
James & Margie Gallt	Fred Heide	Jeff Johnson
Mary Gandt	Sibyl Heide	Mary Ann Johnson
Judith Gaskell	Lea Heine	Mr. Bill Johnson
Frank Gentry	Doug & Renea Heinrich	Milo Jones
Phyllis Geyer	Andrew & Meagan Hendrickson	Agnes Jorgenson
Thomas Gibson	Scott Hendrickson	Laura Just
Carl Giessel	Dennis Herrle	Beatrice Kabler
James Gilbert	Edward Heveran	Jack Kaeck
David Gilman	Bill Hibbard	Robert Kahl
Elsbeth Gimmmler	Dean Hickey	Steven Kahrs
Franz Gimmmler	Kandace Higley	Delores Kaiser
Paul Girod	Michael Hildebrandt	Steve & Lynn Karges
Sarah & Scott Godfrey	Nancy Hill	Carolyn & Charles Keller
Ben Goldstein	John Hockman	Robert Kellner
Gordon Goodman	Joann Holderman	Charles Kemper
James Goodwin	Judy Hollingshead	Marsha Kerley
Mike Goss	Thomas & Janelle Hollingshead	Alan & Anne Kimbell
Barbara Gould	Joseph Hopfensperger	Robert Kimbell
Hildy Grady	Lloyd Hornbostel	Susan Kinde
Janet Graf	Robert Horst	Rose Marie Klein
Jerold Graff	David Housel	Jean Klingenstein
Ruth Ann Graham	Nancy Housel	Brian Knox
Alison Greaves	Robert Huettl	Julie & Merritt Knox
Maurice Guptill	Allison Huey	Naoma Knuth
Wendy Hagy	Alice Huff	Lois Komai
Jeanne Halama	David Hughes	Harry Konkel
Pat Hale	Jennifer Hull	Marlene Konsek
Marion Hall	Sarah Hull	David Kopitzke
Kim Hammerberg	Cathy Hutchison	Lon Kopitzke
Lucy Hammerberg	Heath Hutchison	Carol Kopriwa
Norma Hammerberg	Robert Hutson	Flora Kramar
Margaret Hansen	Clement & Kathleen Imhoff	Martin Krebs
Byron Hanson	Donald Irwin	Larry Kress
Lee Ann Harling	Don Jabas	Dick Krueger
David & Ann Harsh	Jean & Rodney Jacobson	Jeff Kunkel & Mary Elyn Bahlert

Kenneth Lange	Sarah McGowan	Roger Opiela
Jerome & Barbara Langenecker	Maureen Sandstrom McGrath	David Opperman
William Lanz	Lincoln McGurk	Elaine Orstrom
Barbara Larsen	Flint McRoberts	Robert Papke
Ann Lawler	Mary Mealey	Evelyn Parks
Suzanne Le Feber	Vicki Medland	Georgia Parks
Mitchell & Jean Leavitt	Greg & Marsha Meissner	Marvi Pechman
Will Leland	Patricia Meloy	Elizabeth Peck
Richard Lenke	Daniel Meyer & Mary Jean Kraybill	Peninsula Planters Garden Club
Kenneth Lennartz	Gertrud Meyer	John & Maryann Penkal
Dennis Lenzendorf	Ruth Miles	Kristina Peters
Richard & Carol Leonard	Sandy & Edward Miller	Elaine Peterson
Margaret Lewis	Nancy Mills	Jonlee Peterson
Marjorie Lindsay	Mary Jane Moore	Patrick Pflieger
Charles Lingelbach	Mosette Morrison	Paul Phillips
Michael Lisle	Irene Mostek	Bruce & Joan Pikas
Patricia Lison	Alicia & Hugh Mulliken	Larry Pitsch
Marcey Loehlein	Lester Munson	Lucille Pohl
Helen Loewi	Katherine Murwin	Brian Purrington
Dennis Lonstine	Gene Musolf	Michael & Carole Raap
Randall Loss	Rebecca & Michael Nash	Joan Radomski
Richard Lovett	Richard Nebel	Nancy Rafal
Louise Luebker	Erik Nelson	Richard & Gretchen Regnery
Charlotte Lukes	Karl Nelson	Christy Rentmeester
Sharon Lumsden	Lynn Nelson	Robert Reppert
Margaret & Paul Lurie	Michael Nelson	Mary Reusche
Jeff Lutsey	Mr. John Nelson	Douglas Richter
Joanne Maass	Randall Nelson	Byron Riley
Lazarus Macior	Charles Netzow	Betty Roberts
Mike & Barb Madden	Randall Nicholas	Elisabeth Rogers
Marilyn Mahlberg	Shar Niekamp	Ann Rothschild
Ann Maksymiec	Andrew Njaa	Michel & Judy Roy
John Marquardt	Lee Nordgren	Kathryn Rubman
Mark Martin & Susan Foote-Martin	Barbara Norene	Nancy Russell
Ruth Marty	Douglas Ogilvie	Ruth Sandor
Jim Marx	Lorain Olsen	Karen Sandstrom
Lloyd McCarthy	Carol & Bruce Olson	Cynthia Sargent
Neil McCarty	Manley Olson	Robert Savard
Gordon McDonough	Gale Onan	Janet Scalpone
Thomas McGovern	Janet Ong	Edward Scanlan

William Scheckler
Henry Scheig
Rod Schlise
Gretchen Schmelzer
Merry Schmied
Bob Schoenthaler
Ruth Scholz
Claire Schubert
Heidi Schultz
Frieda Schurch
Neena Schwartz
Sally Seiler
Daniel Sheehy
Patricia Shelton
Ann Shepard
Michael Simonich
Russell Sineni
Charles Skala
Margaret Skinner
Clyde Smith
Grace Smith
Mark & Karen Smith
Stewart Smith
Dick & Mary Smythe
Maynard Snell
Nancyanne Soprano
Donald Spude
Susan & Kurt Sroka
Aurelia Stampf
Ms. Mary Steckart
Michael Steffen
Robert Steffen
Joyce Stevens
Onnolee Stevens
Nancy Stevenson
Cynthia Stiehl
Thomas & Mary Jo Stock
Richard Stollberg
Mrs. Stanley Stone

Sue & Tim Stone
Jeffrey Strumberger
Jane Studt
Joy Stuppia
Sturgeon Bay Home & Garden
Club
Thomas Sutter
Lois Sutton
John & Deanna Swanson
Shirley Sykora
Thomas Tanner
W. Taylor
John Teichtler
Jack Termaat-Johnson
John Thanos
Mary Theisen
Ann Thiel
Emma Thomas
Jonathan Thomas
Betty & Curtis Thoms
Gerald Tice
Kathy Tiller
Jason Tishler
William & Betsy Tishler
William Tonkin
Deborah Townsend
Julia Townsend
Martha Townsend
Nancy Townsend
Ruth Tschanz
Carol Tumey
Barbara Turner
Judy Turner
Sheila Turner
William Urbrock
Rosemary Utzinger
John Van Den Wymelenberg
E. Vedell

Thora Vervoren
David Vinton
Jon von Briesen
Theodore & Peggy von Briesen
Randall Wade
Robert Wagner
Brian Wake
Judy Walch
Susan Walz
Barbara Ward
Brian Warnecke
Larry and Chris Warren
Elva Waters
Mary Webster
Joan Werner
Keith White
Hugh Whiteley
Ann Wick
Ralph Wiken
Susan Wiles
Sybil Wilke
Marylin Wille
Eleanor Williams
Wendy Williams
Karen Wilson
Mary Wilson
Ruth Wilson
Albert Witt
Margaret Wolf
Thomas Wolfe & Pat Powers
Peter Wolter
James Worrall
Jane Wrede
Rosemary Wright
Elizabeth Zimmerman
Fred Zimmerman
Martha Zipsie
John Zoerb

It is because of you that we are strong. We look forward to our shared future and inspiring the next generation of conservationists to continue the important work we do.

Thank you!

