



**2022**  
**THE RIDGES SANCTUARY**  
**ANNUAL REPORT**

**PRESERVATION • EDUCATION • RESEARCH**

## FELLOW MEMBERS OF THE RIDGES FAMILY,

*Connections* has been a common theme throughout the last two years. Connections have built The Ridges to the organization we know and love today. If it weren't for the connection of our founders to the incredible biodiversity found within the ridges and swales, and their connections to a community of change makers, The Ridges Sanctuary as we know it today may not have existed. We are constantly reminded of the challenges those that came before us faced as they fought to protect the ridges and swales and all protected land in Door County. The story of conservation in Door County is one to admire, and we are humbled by the opportunity to continue to tell its story and inspire the next generation of conservationists.

Our founders set out with a purpose to protect the Sanctuary and beyond and *carry on educational and scientific activities that will promote the cause of the conservation and preservation of wild plant and animal life and natural scenery* (Source: 1937 Articles of Incorporation). For nearly nine decades, The Ridges has done just that. We continue to expand our community and connect with individuals, places, and organizations to actively promote positive environmental behaviors through impactful educational experiences, land management and protection, and ecological research.

The most important connection we cherish today, is our connection with YOU. Members are the foundation of The Ridges Sanctuary. It is because of your support that 2022 was a spectacular year of growth. We committed to the development of a 20-year vision, purchased the Ridges Inn and Suites, reignited our environmental education programs, invested in research and citizen science, and more! We are thrilled to share the accomplishments and growth of The Ridges Sanctuary in 2022 with you in this report. Alongside our accomplishments, you'll note the significant recommendations from our newly adopted Master Plan that will provide new opportunities to expand on our mission and further engage our community and partners.

As you read this report, we hope you will reflect on one of our favorite questions: What is your nature connection? And more deeply, what is your Ridges connection? We have all come to The Ridges with different backgrounds, interests and passions, but one thing that we all share is a belief in the mission of The Ridges. We are excited to continue to deliver on our mission with your support.

Onward together to inspire the conservation of Nature,



*Dave Zuhlke*  
**DAVE ZUHLKE**  
Board President



*Katie Krouse*  
**KATIE KROUSE**  
Executive Director

### 2023 BOARD OF DIRECTORS

Dave Zuhlke *President*  
Jeff Lutsey *Vice President*  
Sandy Miller *Secretary*  
Grace Rossman *Treasurer*

### DIRECTORS

Linda Brooks  
Deb Fitzgerald  
Chuck Germain  
Michelle Hefty  
Jone Kiefer  
Mark Martin  
Sher Rockway  
Bill Wolff

### STAFF

Katie Krouse  
*Executive Director*  
Andy Gill  
*Assistant Director*

Jim Kinney  
*Accountant*

Wendy Beilfuss  
*Administrative Assistant*

Jeanne Farrell  
*Director of Marketing*

Tony Kiszonas  
*Director of Research*

Sheryl Honig, PhD  
*Environmental Educator*

Jane Morse  
*Environmental Educator & Early Childhood Specialist*

Anna Foster  
*Director of Programming*

Sam Hoffman  
*Land Manager*

Mary Beth Anschutz  
*Nature Store Manager*

Jackie Rath  
*Program Coordinator*

Cathy Costelow  
*Visitor Engagement Specialist*

*Cover/Back page photos by:  
Andrew Pirrung*

## REVENUES

	2022	2021
Contributions - Undesignated	\$718,798	\$367,956
Contributions - Designated & Endowment	\$405,513	\$1,555,047
Memberships	\$99,785	\$97,725
Net Special Events	\$53,471	\$28,083
Net Nature Store Sales	\$82,551	\$46,862
Trail Fees, Tours & Guided Hikes	\$97,904	\$83,207
Workshops & Camps	\$57,631	\$46,692
Other Support and Revenue	\$103,997	\$95,672
<b>TOTAL REVENUES, SUPPORT AND GAINS</b>	<b>\$1,619,650</b>	<b>\$2,321,245</b>

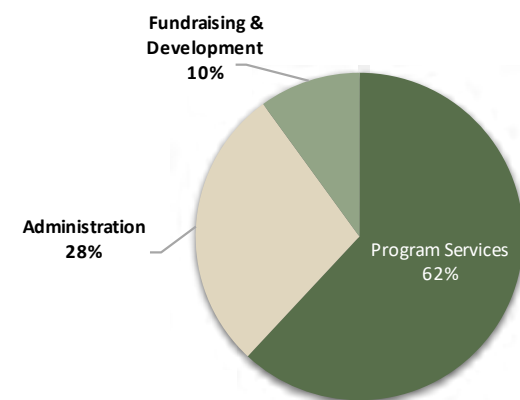
## EXPENSES

Program Services	\$644,201	\$440,046
Administration	\$291,799	\$158,850
Fundraising & Development	\$104,038	\$88,142
<b>EXPENSES</b>	<b>\$1,040,038</b>	<b>\$687,038</b>

## CHANGE IN NET ASSETS

Change in Net Assets Before	\$579,612	\$1,634,207
Gains & Losses on Investments		
Net Realized & Unrealized Gains on Investment	-\$445,757	\$418,240
Change in Beneficial Interest in Perpetual Trust	-\$29,782	\$13,447
Change in Net Assets	\$104,073	\$2,065,894
Net Assets - Beginning of Year	\$13,361,195	\$11,295,301
<b>NET ASSETS - END OF YEAR</b>	<b>\$13,465,268</b>	<b>\$13,361,195</b>

### EXPENSES



## ASSETS

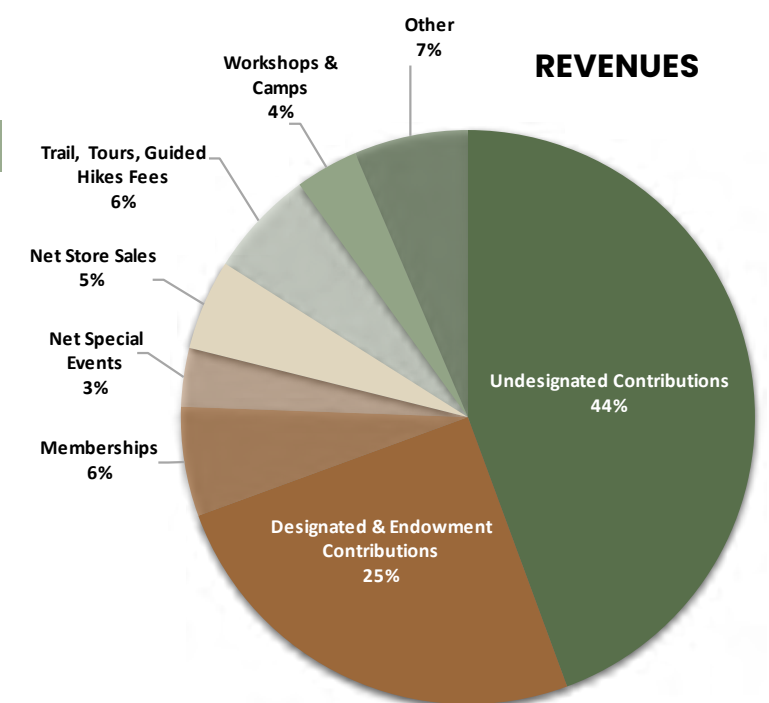
	2022	2021
Cash & Cash Equivalents	\$1,470,257	\$911,296
Accounts Receivable	\$14,456	\$62,780
Grants Receivable	-	\$7,530
Prepaid Expense	\$11,249	\$10,250
Nature Store Inventory	\$25,201	\$21,366
Land & Fixed Assets - Net of depreciation	\$9,109,067	\$8,030,039
Cash Restricted for Long Term Purposes	\$599,350	\$530,110
Ridges Endowment Investments	\$3,277,609	\$3,650,289
Other Assets	\$139,195	\$168,977
<b>TOTAL ASSETS</b>	<b>\$14,646,384</b>	<b>\$13,392,637</b>

## LIABILITIES & NET ASSETS

Accrued Expenses, Payroll & Other	\$34,210	\$31,442
Note Payable - Ridges Inn	\$1,146,906	-
<b>TOTAL LIABILITIES</b>	<b>\$1,181,116</b>	<b>\$31,442</b>

## NET ASSETS

<b>TOTAL NET ASSETS</b>	<b>\$13,465,268</b>	<b>\$13,361,195</b>
-------------------------	---------------------	---------------------



# 2022 IMPACT

## ACRES PROTECTED

1,674 Total acres protected  
2.5 Acres added in 2022



## YOUTH EDUCATION

### Forest Days

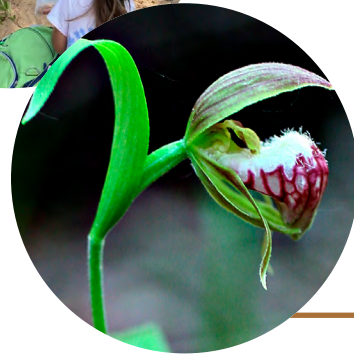
354 Students engaged each month between Gibraltar and Sevastopol Public Schools



### Education at The Ridges

210 Youth ages walking – 11 years old are engaged at The Ridges Sanctuary

- Backpack Adventure Camp
- Dragonfly Nature Preschool
- Ridges Forest School
- Tiny Trekkers



## FESTIVAL OF NATURE

552 Festival of Nature attendees, participating in 65 Field Trips in collaboration with 11 partners in conservation



## RESEARCH

### Orchid Trekking

6,000 Individual Orchids recorded in 2022  
29 Species Recorded

## WEBSITE

RidgesSanctuary.org reached

47,635 Visitors



## MEMBERSHIP

2,158 Members

5

New Lifetime Members

Members in all 50 States!

89% Member Retention in 2022 vs 86% Member Retention in 2021



## VOLUNTEERS

7,954 Volunteer Hours

\$252,940 In value supporting The Ridges in the following areas: Guided Hikes, Reception Desk, Wednesday Crew, Range Light Docents, Special Events, Research and Citizen Science, Garden Maintenance, Administration



## NUMBER OF VISITORS

30,300 Visitors to the Nature Center



## RANGE LIGHT BOARDWALK

850 Feet of boardwalk replaced entirely by volunteers and staff

Over 1,000 volunteer hours were dedicated to this project, saving The Ridges Sanctuary over \$31,000



## MASTER PLAN DEVELOPMENT

Hundreds of hours committed by staff, board, and community members to develop our inspiring 20-year vision



## DONORS

1,187 Donors supported our important mission driven work

### Albert Fuller Society

2 New donors added to the Albert Fuller Society, leaving a natural legacy with the organization



## GUIDED HIKES

710 Participants  
1,200 Miles Hiked Collectively

# RESEARCH



After an illustrious 40-year career educating students at Southern Door, Tony Kizonas retired. In September, Tony accepted the position of Director of Research, primarily working with ongoing plant restoration projects and a robust Citizen Science program. The transition was greatly assisted through the help of the entire Ridges Sanctuary staff and volunteers, especially Sam Hoffman and Jane Whitney. Not only did Sam and Jane have everything incredibly well organized, they also unfailingly provided and continue to provide help whenever asked as we move forward.

## PARTNERING IN RESEARCH

We are excited about several research collaborations taking place at The Ridges. Texas Tech University researcher Grant Doering reported the discovery of two ant species on property that are the first documented in the state, one of which may be a national first. We continue to expand partnerships with other research groups and have approved four new research permits.

## CITIZEN SCIENCE

Through the strength of volunteers, the Citizen Science program is an exemplar for conservation colleagues to emulate. In addition to WAV Stream Monitoring, Christmas Bird Count, Midwest Crane Count, Sucker Monitoring, among others, a Plant Inventory project was initiated. The team worked on protocol development and survey work, documenting 145 species of plants on a small, parcel of land. This group is currently refining methodology in different plant communities and will continue to tackle the monumental task of completing a Sanctuary Plant Inventory.

Our team of orchid trekkers is on a quest to locate as many orchids as possible that are naturally growing in The Ridges Sanctuary. Thus far, 29 species have been identified, with certain species recorded for the first time in Door County. This tenacious group recorded over 6,000 individual

orchids, representing 21 different species, some of which are listed as either threatened or of special concern.

Currently, we have deployed 16 HOBO monitors dedicated to the Ram's Head Lady's Slipper restoration project. Through grant funding and gracious private donations, these electronic monitors are collecting data on light values, soil temperature, and soil moisture which provide information about abiotic environmental parameters for orchid growth and reproduction. In combination with the specific plant data collected by our dedicated citizen scientist plot monitors, our statistician is crafting a picture of the Ram's Head "sweet spot" that will determine where out planting has the best possible chance of success for this threatened orchid. This methodology will also be employed as we proceed with a Dwarf Lake Iris restoration/translocation project.

Orchid shade houses were established and are maintained by another group of citizen scientists.

These volunteers planted the orchid seedlings and ensure that the plants are watered and the flats weeded throughout the season. The group also sets up the houses in the spring and strikes them in the fall, tucking in the orchids for the winter. The shade houses are important for our vernalization experiments and allow guests to view three species of orchids in one spot, with great photo possibilities.

We look forward to expanding our Citizen Science opportunities, increasing collaborations, and refining our research protocols.

## LOOKING TO THE FUTURE: THE RIDGES SANCTUARY MASTER PLAN

The recent purchase of the Ridges Inn property creates a unique opportunity for a consolidated Research Campus befitting TRS' orchid research program, in addition to providing a permanent base for citizen science and housing the majority

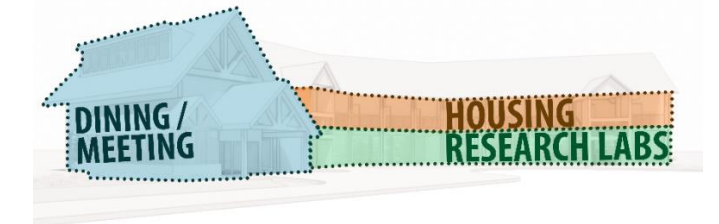
of TRS staff not associated with daily operation of the Nature Center.

## COLLABORATIVE RESEARCH SPACE

The renovated main lodge building includes office, lab, and support space for existing research programs, and the potential for cooperative research-in-residence programs with regional partners and institutions utilizing renovated, on-site lodging.

## CITIZEN SCIENCE

A permanent base for citizen science is established in the remodeled Juniper-Birchwood Cottage, with driveway access to load supplies.



# EDUCATION

The Ridges education team provided impactful programming to children of all ages in 2022. Through educational programs that included Tiny Trekkers, Gibraltar and Sevastopol Forest Days, Ridges Forest School, Field Trips, and other programs, Ridges educators furthered the mission of The Ridges.

## FOREST DAYS

Ridges educators provided monthly Forest Days for students grades 4k-6th at Gibraltar and grades 1 and 2 at Sevastopol starting in the fall of 2022. A total of 26 classes and 354 children participated in forest days each month. Ridges staff took students into the school forest for 90-minute lessons each month, covering topics like the carbon cycle, patterns in nature, the interconnectedness of ecosystems, resource availability, and biodiversity. With the change in seasons, each month brought new opportunities for students to learn and explore.

Educators also implemented GLOBE protocols into 5th and 6th grade Forest Day curriculum in the fall of 2022. GLOBE is a hands-on approach to the scientific method for students to learn more about the ecosystem in which they live. Through protocols sorted into the atmosphere, biosphere, hydrosphere, pedosphere categories, Forest Day students collected data in their school forest and uploaded it to the GLOBE database.

## FOREST SCHOOL

In September of 2022, the Ridges introduced Ridges Forest School, a natural science education program designed for Door County homeschool students aged 6-9. This supplemental program served seven families in total, with Ridges educators Jane Morse and Jackie Rath teaching three days each week for 2 ½ hours per class. RFS utilized the Sanctuary and other Ridges properties as their classroom, allowing students to hike through diverse ecosystems, learn to record their observations and questions about the changing nature around them, engage in hands-on investigations with their peers, and make personal connections with the natural world.

## BACKPACK ADVENTURE CAMP

In 2022, The Ridges offered six weeks of the summer Backpack Adventure Camp program. This allowed for 186 spaces for campers in Backpack Adventure Camp, creating 62 additional spaces compared to

2021, and an additional two weeks of programming. Campers explored the Sanctuary, Family Discovery Trail, and beach habitats. At the end of the week, they took home items from their backpacks, including butterfly nets, bug jars, and binoculars to further explore nature in their own backyards.

## BOARDWALK SIGNAGE

The Ridges received a generous grant from the Brookby Foundation for the purpose of creating permanent interpretive signs along Hidden Brook Boardwalk. These signs expand on the Nature Center's indoor exhibits and provide informal learning opportunities to visitors along the boardwalk about the flora, fauna, and history of The Ridges.

## STEWARDSHIP BASED PROGRAMMING

Ridges programs such as Monarch Madness, the Sustainable Citizens Symposium, Ridges Reads, Owl-O-Rama, the Bluebird Workshop, and the Wisconsin Bat Workshop increased awareness and sustainability in 2022. Demand was high for stewardship-based programs. For example, 88

participants signed up for the first meeting of Ridges Reads: Ridges + Regeneration. These programs serve to educate the public and inspire stewardship of the Sanctuary and other natural spaces.

## LOOKING TO THE FUTURE: THE RIDGES SANCTUARY MASTER PLAN

### NORTH CAMPUS

An improved campus setting is created around the Marshall and Kaye cabins with a new flexible classroom and events pavilion, by reconfiguring the existing parking and relocating the workshop to the east end of the parking lots. The new pavilion provides classroom space, storage, and year-round toilets, with the ability to flex in warmer seasons to accommodate larger groups complementing offerings at the Nature Center. The historic cabins will remain, and will be repaired with minor upgrades to lighting and windows. Accessible trail connections link to the Family Discovery Trail, the Upper Range Light and the Finell property.

### FAMILY DISCOVERY STATION

Changes in the configuration of the Family Discovery Trail will make youth camps more successful and safer. By locating a seasonal educational pavilion, coupled with toilets, storage, drop-off and parking area, the station functions independently without the need to constantly cross Highway 57 for basic operational needs.



# PRESERVATION



Significant accomplishments in preservation of the Ridges were achieved in 2022. With the replacement of the Range Light Boardwalk, over 60 volunteers dedicated over 1,000 hours to rebuild 850 feet of the boardwalk that connects the Upper and Lower Range Lights. This project was made possible through a generous posthumous donation from the Farrell family. The new boardwalk, one of the most visited parts of the Sanctuary, was widened to 6 feet with additional toe rails, and provides greater accessibility to visitors of all ages and abilities. On the heels of this project, The Ridges saw its volunteer impact grow in existing groups, such as our maintenance-focused Wednesday Crew and Garden Crew, and the formation of new volunteer working groups, including the revival of the Barbary Pirates that help with controlling invasive species in the Sanctuary.

Invasive species is another area of focus in preservation and land management and remains the second largest threat to biodiversity behind habitat loss. Priority management activities included the start of a property wide inventory and ongoing treatment of targeted species. Land acquisition in 2022 included a waterfront property on Ridges Road and The Ridges Inn property off of

Hwy 57, a total of 3 acres of important stream and lakeshore habitat that have been incorporated into The Ridges Sanctuary State Natural Area.

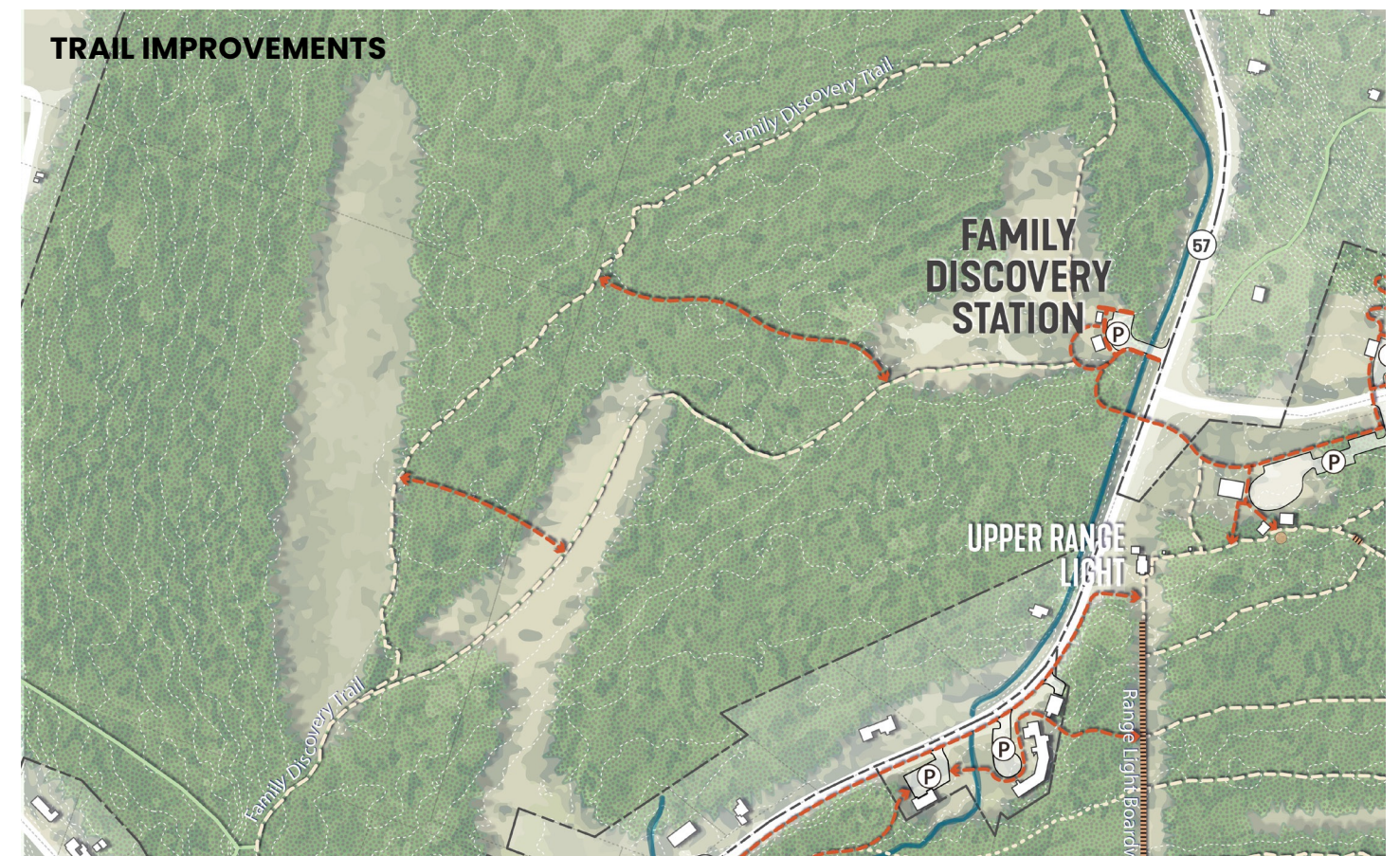
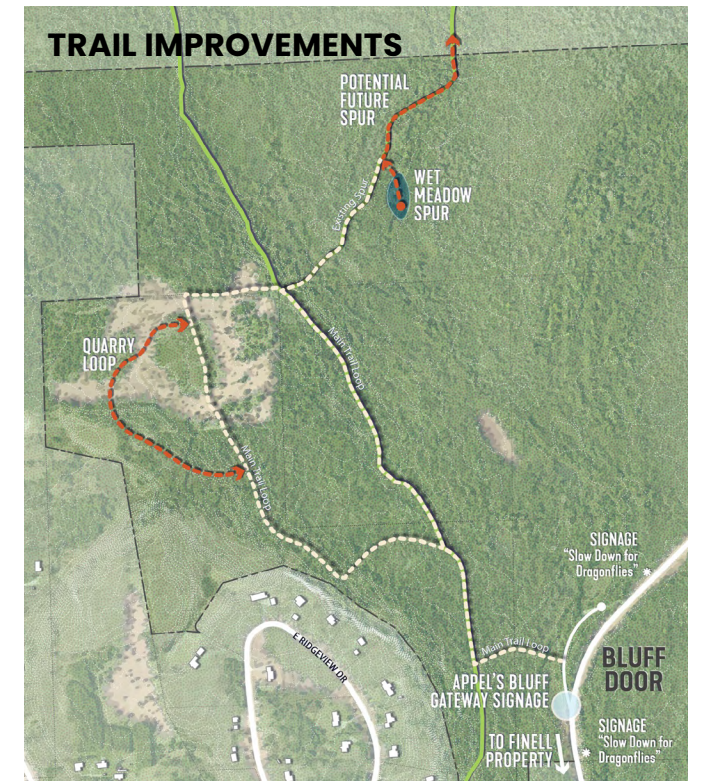
Looking ahead, the most exciting recent development in rare plant conservation is the implementation of The Ridges Dwarf Lake Iris (*Iris lacustris*) Restoration project. Conceived from master plan discussions, grant funding for a project to research, promote and restore Dwarf Lake Iris and its habitat within the Sanctuary has been awarded by the U.S. Fish & Wildlife Services' Coastal Program. This project will aim to learn more about this small iris species and its preferred habitat by monitoring and collecting data on current populations to help inform long-term management and restoration efforts. The result will be habitat manipulation through significant tree clearing and canopy thinning to mimic historic disturbance regimes, creating more favorable conditions, particularly in terms of light availability. An overarching goal of the project is to introduce Dwarf Lake Iris to other areas of the Sanctuary that have potentially ideal conditions for the plant.



## LOOKING TO THE FUTURE: THE RIDGES SANCTUARY MASTER PLAN

As part of the master planning process, a Land Management Plan was developed to formally establish TRS policies for land management and acquisition. To preserve and improve the Sanctuary's natural resources, the plan establishes practical strategies which are expected to adapt over time in response to new opportunities or threats, including the following topics:

- State Natural Area Management Plan
- Land Management Zones
- Survey and Monitoring Protocols
- Research and Citizen Science
- Vegetation Management
- Trail and Maintenance Access
- Land Acquisition Strategy



## THANK YOU FOR YOUR GENEROUS SUPPORT

Your support makes everything we do possible. Thank you for supporting our incredible organization, and helping us to deliver on our mission to promote positive environmental behaviors through impactful educational programs, land management and protection, and ecological research. Together we continue to inspire the conservation of Nature.

This is an Annual Report Listing of those who have given to The Ridges Sanctuary from January 1 through December 31, 2022.

Your gift deserves to be acknowledged. If we have made an error, please notify us so that we can correct it for future publications. If you prefer to remain anonymous, please let us know at 920-839-2802 or [info@RidgesSanctuary.org](mailto:info@RidgesSanctuary.org).

### The Albert Fuller Society

One of the first to recognize the unparalleled natural assets of the land, now managed by The Ridges Sanctuary, was renowned botanist Albert Fuller. His tireless efforts on behalf of those assets resulted in the founding of The Ridges in 1937 and subsequently, in many other important conservation initiatives. The Albert Fuller Society recognizes donors who made a lasting contribution to environmental preservation by including the Sanctuary in their estate planning.

If you have named The Ridges in your will or trust, or plan to do so, please let us know so that we may welcome you into the Albert Fuller Society and recognize this profound contribution to the future of the Sanctuary and your dedication to preserving and protecting its environmental diversity.

Anonymous (2)  
Edith M. Ballin  
Hugh & Joyce Bell  
Judy Brown  
Julie & John Carpenter  
Kerstin Conner  
Larry & Cynthia Crock  
Robert Davis III  
*Millicent Ficken*

Barbara & *Spencer* Gould  
Mrs. Pat Hale  
Mary Hedeem  
Pam & Craig Heilman  
Ronald Horn  
Rev. Nancy Hooper Horvath  
Michel & Judy Roy  
Tim & Carol Smith  
Michael P. Steffen

Diane & Terry Steiner  
Janet & Thomas Sutter  
Drew & Mary Tucker  
Thora M. Vervoren  
Hank & Judy Whipple  
James & Betty Williams  
Barbara & Gary Yeast  
Dave Zuhlke & Jane McKie

### Annual Appeal

Eleazar Alcantar  
Mark & Andrea Allen  
Helen Ambuel  
Michael & Lesley Ammons

Linda Anderlick  
Heather Andersen  
James & Jane Anderson  
Joanne Anderson

Linda Anderson  
Mary Pikul Anderson  
Nancy & Thomas Anderson  
Marjorie & Dan Andrae

Penny or Paula Anschutz  
Jeff & Jennifer Arch  
Caroline & Doug Ault  
Reliable Auto  
Katerina Baar  
Baileys Harbor Yacht Club  
Resort  
Lawrence & Joan Balistreri  
David Barnes  
Harriett Barrett  
Dan Baumann  
Priscilla & Anthony Beadell  
Craig & Christie Bender  
Joan Bennett  
Ricky & Gerri Bernard  
Jim & Trish Black  
Bob & Kay Blackburn  
Lucy Bloedorn  
Mary Bondeson  
Laurel Braatz  
Norma & John Bramsen  
Mark Breseman  
Linda Brooks  
Genie Brown  
Terry Brown  
Ted & Judy Buenzli  
James Bunning  
Nancy & Patrick Burke  
Marie Burnett  
Bonnie Bush  
Rob Calia  
Joseph & Terri Campshure  
Cyndi Cantwell  
Ginnie Cappaert  
Gilbert & Joyce Carlson  
Scott & Patricia Carlson  
Diane Carr  
Jill & Anthony Cecchini  
Brian & Eve Chapin  
Lauren Charous  
Elizabeth Christian  
Karen & William Clapp  
Peter & Barbara Classen  
Glenn & Mary Clayton  
Judi & Chris Collins  
Richard B. Conner  
Howard & Susan Cosgrove  
Shelly & JD Culea

Mitch & Sandie Custer  
Philip Kohler, M.D.  
John & Susan Davenport  
Susan Davie  
Peter Deschler  
Don & Marianne Diekman  
Dorothy & Robert Dieter  
Martha Blalock & Nick Doane  
Rebecca Dominik  
Doug & Judy Drew  
George & Susan Dugan  
Joanne & Chuck Dull  
Steve Dullard  
Don & Brenda Durand  
Pam & Adrian Duszynski  
Greg Dziadosz  
Ecology Sports  
Michael Edwards  
Michael Elkow  
John English  
Ephraim Shores Resort  
Anne Epstein  
Jeanne Esch  
Joan Fagan  
Robert & Barbara Fahrenbach  
Susan Farrell  
Jeff Stanley & Sue Fedenia  
Megan Fellman  
Fidelity Brokerage Services LLC  
Fidelity Charitable  
Anthony & Cathy Fiorato  
George & Judy Fitchett  
Martin Ford  
Joan Fordham  
Fred & Stephanie Foreman  
Mary & Richard Foster  
Theda & Tamblin Clark Smith  
Family Foundation  
Irene Fox  
Elizabeth Franklin  
Janet Frederiksen  
George & Bernie Freeman  
Sarah & Bill Freyman  
Steve & Lisa Friedland  
Kent & Kristin Powley Family  
Fund  
Jac & Edith Garner  
Lois & Gerald Garrity

George L.N. Meyer Family  
Foundation  
Chuck & Faye Germain  
Carl Giessel  
Joan Gilbertson  
Andy & Katie Gill  
Margaret Glatz  
Barbara Goldberg  
Jay Golla  
James Goodwin  
Gwenn Graboyes  
Hildy Grady  
Larry & Ruth Ann Graham  
William Granger  
Nancy Grant  
Robert & Elke Hagge  
Lee Hansen  
Lindsay Hanson  
Margaret Harding  
James & Ann Harris  
Willard & Mary Hartman  
Hartman Family Fdn  
Bonnie Hartmann  
Eugene D Haug  
Richard & Carrie Hauser  
Neil & Ann Havlik  
Justus Hedeem  
Michelle Hefty  
Paul Heim  
John & Liz Heller  
Robert & Jean Henke  
Alan & Sharon Hillard  
Allan Hins  
Stan Hoffert  
Ron & Alice Holden  
Robert & Lisa Honig  
Patricia Huber  
John L. Huff  
Mark & Amy Huftel  
Barbara Hyde  
Robert Davis III  
Carl & Judy Jackson  
Jean & Rodney Jacobson  
Lawrence Johansen  
Arlene Johnson  
Brian & Kristin Johnson  
Cynthia & Albert Johnson  
Gary Johnson



Margie & Tom Juedes	Marilyn Mahlberg	Dennis & Ann Floor
Don Fraker & Maja Jurisic	Lizabeth Maltman	John Plume
Robert Kahl	Kristine Marshall	Rex & Linda Pope
George Kaub	Richard A Martin	Pat Powers
Stephanie Keller	Nicole & Tim Mathes	James D Prugh
Bob Marquis & Carol Kelly	Jim & Mary Lee Matthes	H. J. Przybylo
Susan Kennedy	Marie Sieker & Rod Matthews	Michael & Carole Raap
Raymond & Mary Kent	Andrea McAuliffe	Patty Ray
Dennis & Barb Kessler	Bob McCurdy	Sue Reindollar
Marguerite Keys	Paul & Christine McGinnis	Judith Rhodes
Jone & Kurt Kiefer	Sarah McGowan	Thomas Rhodes
Todd & Ann Kiefer	Dave Zuhlke & Jane McKie	Steve & Fran Richman
Bruce & Ricky Kiesling	Daniel Meyer	Gordon Ridley
Catherine Kilcoyne	Emilia Mickevicius	David Rieckmann
Charles Kimbell	Diane Miller	Larry & Bonnie Riffe
Terry Kita	Judith Miller	Judy Hoard & Beth
Gloria Dougherty & Ronald	Wayne & Barbara Mohr	Ringgenberg
Klimaitis	Barbara Jirsa & Sean	Todd & Sheryll Rockway
Patrick & Kris Knapp	Monaghan	Franklin Rogers
James & Marion Kobussen	Bill & Sandy Moore	Patricia Rom
Kevin & Carolyn Kolasinski	Richard Kanas & Linda Moore	John & Mary Rooks
Linda Kolberg	Ken Mueller	Roots of Oak Fund Community
Robert Kopp	John & Nancy Munch	Foundation for Fox Valley
Joan Korb	Walter & Elaine Naleway	Judith Rosenstein
Anne Kordesh	Rebecca & Michael Nash	Michel & Judy Roy
Ken Kozak	Deanna Nelson	Michael & Sandra Ruddick
Carl & Nancy Krouse	& Sandra Nelson	Dorothy Russell
Don & Brigid Krutek	Jean Barrett & Paul Neuman	Rose Sage
Wayne & Julie Kudick	David & Lori Nicholas	Chuck Salisbury
John & Nancy Kujawa	Nancy J. Nicholas	Charles Sandine
James & Becki Kurtz	Dan & Penny Niesen	Norman Sandstrom
Jerome & Barbara	Phoebe O'Connell	Nancy Sargent
Langenecker	Germaine Olm	Kirk & Donna Scattergood
Don & Jan Lanik	Jefren Olsen	Dale Schaber
Brian & Sue Lanser	Bruce J. Olson	William Scheckler
Donald & Kayval Larson	Claire Fritsche & David Olson	Rod Schlise
Ann Lawler	On Deck Clothing Company,	Bill Schult
Lawrence & Elfriede Leporte	Inc.	Jim & Virginia Schultz
Anthony & Judith Licata	OUMU Foundation Inc.	Jim & Marti Schultz
David & Caroline Link	Bob & Cathi Parks	Michael Schultz
Carolyn & Eldon Linnebur	Eric Perlman & Janelle Peotter	Barbara Schutt
William & Margaret Lipschultz	David Petering	Mike & Kathy Sears
Deborah Logerquist	Sandy U. Petersen	Stephen & Paula Settle
Margaret Lott	Mary Pickett	Fredrick Sieker
Katherine Luck	Alan Parks & Lynn Pierce	Denise & Steve Simeth
LUMW Foundation	Bruce Pikas	Jack L Simon
John & Mary Ann Lundquist	Leonard Place	Patricia & Steve Smith
Rachel Lurie	Mike & Angie Plambeck	Christopher Smithka

Dick Smythe  
Carol Soper  
John & Jill Spude  
Emily & Steve Stanley  
Stacey & David Stoehr  
Tim & Sue Stone  
Scott & Holly Stoner  
Thomas Stram  
Marie & David Strauch  
Sharon Streb  
Joseph Otto & Rosemary  
Stuart  
Bill Surbaugh  
Greg De tennis  
Josephine Thiell  
Roy & Mary Thilly  
John Thompson  
Betty Thoms  
Robert & Mary Trainer

Thomas & Jo Ann Turriff  
Roy & Sandy Uelner  
Barbara Urbrock  
Steve & Debbie Viktora  
Philip Villasenor  
Gary & Helene Vitse  
Betsy Wagner  
Robert & Rose Wagner  
Roger Ruggeri & Andrea  
Wagoner  
John Waldron  
Jane Wall  
James & Ann Walsh  
Linda Walter  
Susan Walz  
Larry & Chris Warren  
Joy Szopinski & Kathleen  
Waters  
Michael Weiland

Charles Westcott  
Jane & John Whitney  
Thomas & Suzanne Wilkinson  
Gerald Willey  
Cynthia Williams  
Mary Wilson  
Margaret Wolf  
Thomas Wolfe  
William & Kathy Wolff  
Cindy & Rich Wolter  
Diane & Patrick Wood  
YourCause, LLC for American  
Family  
Carl & Sandy Zapffe  
Dwight & Pam Zeller  
John Zoerb

## Bequests

Arny Family Trust  
Alice Essling  
Gary Groat

Irene Luethge  
Katherine M Smith Trust  
Traven Family Fund

Sarah E. Wright Trust Fund

## Donations to Education

Cheena Wade & Robert  
Anderson  
Scott Bethke  
Patricia Blair  
Ellen Bryant  
Susan Burchell  
Julie & John Carpenter  
George & Sharon Cobb  
John & Mary Corriveau  
Jean Davison  
Steven Doelder  
Thomas & Joan Dunn  
Jan & Richard Durr  
Lunette M. Eichler  
Sherrill & Al Eichler  
Anne Epstein  
Marianne Ewig

Jessica & Paul Fagan  
Fall 50 LLC  
Ken & Beth Ferris  
Anthony & Cathy Fiorato  
Sarah & Bill Freyman  
John & Kathleen Schreiber  
Charitable Fund  
Dorothy Gerrits  
Gibraltar Area Schools  
William Gross  
Ellie & Mark Hansen  
Rebecca Hawker  
Barb Hirsch  
Steve & Annie Hogler  
Judy Hollingshead  
Norman & Barbara Johnson  
Raymond & Mary Kent

Catherine Kilcoyne  
Dennis Kois  
Nancy Krause  
Dick Krueger  
Rick & Sue Larson  
Peninsula Pacers LLC  
Margaret Lott  
Ron & Lois Mauermann  
Mayflower Nursery  
Terry & Ally McArdle  
Keith & Stacey McKendry  
Joseph & Pat Melendes  
Bill & Sandy Moore  
Lin Morgan  
Douglas Otopalik  
Rex Owens  
Frank & Kathy Pammer

John & Cynthia Pierson  
Georgia Punswick  
Tim Spurgin & Gretchen Revie  
Rockwell Spark  
Rotary Club of Door County  
North  
James Rowings  
Heather Ruegger

Paul Sager  
Carol Schuster  
Mark & JoAnn Shropshire  
Mark Sprague  
State Farm Companies  
Foundation  
Mary Stevens  
Chuck Szoke

Josephine Thiel  
Carolyn Whisman  
Jay Whitfield  
Howard Williamson  
Catherine Wirtas  
Lynda Withbroe  
Mark & Sarah Woerfel

### Donations to the Endowment

Thomas & Susan Alt  
Paul Didion & Yvonne Bellay  
Susan Crawford & Jeffrey  
Rosemann  
Anne Epstein  
William Guenther  
Gunderson DeNardo  
Foundation  
Wayne & Janet Hanson  
Barbara & David Holman  
Karen Jellema  
Janice F. King

Will Leland  
Ruth Linnemann  
Ron and Lois Mauermann  
Terry and Ally McArdle  
Sandy Miller  
Michael & Carole Raap  
Linda Reed  
Todd and Sheryll Rockway  
Karen Sandstrom  
Stephen & Paula Settle

Mark and JoAnn Shropshire  
Ron and Jennifer Spielman  
Michael Steffen  
Jeffrey Strumberger  
Bill Surbaugh  
Seth and Katie Thomas  
Nancy Wenzel  
Carolyn Whisman  
Jane & John Whitney  
James Wickesberg

### In Kind Contributions

Tim Anderson  
Nancy & Roz Barker  
Coyote Roadhouse  
Larry & Cynthia Crock

Jeff & Pat Hickey  
Mitch Leavitt  
Mary Moschea  
Sandra & Taylor Richey

Lynda Sanford  
Lauri Smith

### Donations to General Operations

Abbott Laboratories – EGC  
Cynthia & Fred Acker  
Mary & Tom Afflerbach  
Robert & Margaret Agnew  
Kenneth & Mary Ellen  
Alexander  
Susan Alt  
AmazonSmile Foundation  
Doug & Laura Anderson  
Jack & Susan Anderson  
Laura Anderson  
Stefan Anderson  
Bonnie Ansley  
Apple

Bruce Arduser  
Richard Merkhofer & Maria  
Aristigueta  
Baileys Harbor Community  
Association  
Baileys Harbor Condo  
Association  
Richard Bak  
John & Jennifer Barnes  
Harriett Barrett  
Kathy Barry  
William & Linda Bauer  
Todd Bausman  
BayCare Clinic Foundation

Mary & David Bell  
Paul Didion & Yvonne Bellay  
Ricki Bellos  
Janet Berard  
Mark Bergum  
Dakota Berry  
Lana Billeaud  
Patricia Black  
Krystin Boyd  
Bill Brettschneider  
Michael & Debra Brophy  
Donna & Steve Bultman  
Andrea & Carl Bumpurs  
Kris Bungener

Linda Busha  
Gregg Calpino  
Andrea & Theodore  
Camenisch  
Susan Carlson  
Catalent  
Stuart & Deborah Chadde  
Renee Chandler  
Deb & Don Chapman  
Atul Chauhan  
Mark Chelmowski  
Chevron Matching Employee  
Funds  
Adam Christensen  
Beth Churchill  
Nancy Ciezki  
Erikka Coletta  
Marshall Collins  
Lisa Conley  
Ellen L Connor  
Peter Conroy  
Larry & Cynthia Crock  
Philip Kohler, M.D.  
Donna Danielson  
Greg Delaruelle  
Scott Peterson & Judith  
Desenis  
James C. Differding & James R.  
Dickes  
Karen Dickmann  
Lisa Dimberg  
Jackie DiNatale  
Keena Spencer-Dobson  
Rebecca Dominik  
Charles & Rita Doyle  
Tim & Cindy Eberhardy  
Anne Epstein  
Julie Erbe  
Donald Feilbach  
Mark & Julie Fialkowski  
Carrol Fibich  
Susan Fiore  
Pat & Diane Ford  
Gail Fox  
Andy Franken  
Todd Frisoni  
Bruce & Grace Frudden  
Nancy Gajewski

James Gallt  
Stephen & Aimee Gauger  
Patrick & Sandra Gerick  
Dorothy Gerrits  
Carolyn Giannunzio  
Lenora Gill  
Rich Gilles  
Google  
Travis Griffin  
John Guenther  
William Guenther  
Guest  
Pat Hale  
Melanie Hall  
Nancy Hammen  
Marilyn Hansotia  
Harbor Condominium  
Association, Inc.  
Linda Harris  
Eugene D Haug  
Mike Heffernan  
Jim & Sue Heiden  
Mel Hendrix  
Robert & Jean Henke  
Scott & Yvonne Herr  
Sara Hesemann  
Pat Hickey  
Beth Hill  
Charles Hoffman  
Kathy Hogan  
Ron & Alice Holden  
Mark Holey  
Teresa Kochaver & Don Hooker  
Hal & Joyce Hothan  
Paul & Linda Houdek  
Kristin Wegner & Eric Howe  
David Hughes  
Kenneth & Mary Ingles  
Andrea Jauquet  
James Jennings  
Cynthia & Albert Johnson  
David & Mel Johnson  
Veronica Johnston  
Jon Jonas  
Gary & Debbie Jones  
Rosemary & Lee Jones  
Joshua Kahn  
Terrance Kane

George Kaub  
Inger Kay  
Barbara Keating  
Jack & Carrie Kelly  
Jone & Kurt Kiefer  
Charles Kimbell  
Susan Kinde  
Dave Kinnoin  
Lucy Klug  
Patrick & Kris Knapp  
Richard Knowles  
Kevin & Carolyn Kolasinski  
Marlene Konsek  
David Kopitzke  
Jann & Keith Kostecke  
Susan Kressin  
Kerry Kuenzi  
James Labiak  
Ed & Mary Langbein  
Don & Jan Lanik  
Julius Lee  
Donna Leighton  
Lance Lemke  
Robert Lengh  
Randeem Lingenhag  
David & Caroline Link  
Carolyn & Eldon Linnebur  
Paul Liss  
Cyndy & Ken Little  
Connie & Bob Lorig  
Elizabeth B & Philip J  
Hendrickson Foundation, Ltd.  
Karen Ludvigsen  
Jeff Lutsey  
Lynn S Nicholas Family  
Foundation Inc  
Steve Lyons  
Jennifer MacKenzie  
Elizabeth Mahoney  
Jon & Marjorie Margolies  
Tim Markus  
Randy & Karen Mathewson  
Ron & Lois Mauermann  
Terry & Ally McArdle  
Robert McGinnis  
Mark McGrath  
Keith & Stacey McKendry  
Dave Zuhlke & Jane McKie

Eldon & Kathryn McKie  
Charles Mead  
Paul & Danita Medved  
Linda & Robert Merline  
Microsoft Matching Gifts  
Program  
Tom Mlada  
Mike & Peg Modl  
Michele Molina  
Bill & Pat Moren  
JoAnne Morris  
Mary Moster  
Christopher Mullen  
Lincoln Murphy  
Cindy & Bruce Nelson  
Melissa Nelson  
Meryl Nelson  
Samuel Nelson  
Nancy J. Nicholas  
Dan & Penny Niesen  
Angela Noel  
Mary Norris  
James ODell  
Diana & Gerald Ogren  
Maren Olsen  
Claire Fritsche & David Olson  
Omaha Community  
Foundation  
Brian & Debbie O'Mara  
John H. Harris & Lisa Palermo  
Patricia Paska  
Greg & Julie Pawlak  
Adam Peronto  
Pfizer  
Paul S. Phillips  
Leonard Place  
Gino Plantamura  
Rex Pope  
Lisa Reineke

Richard W & Dorothy J  
Burkhardt Charitable Fund  
Gordon Ridley  
Bruce Roberts  
Todd & Sheryll Rockway  
Randall & Julie Roenigk  
Patricia Rom  
Glen & Grace Rossman  
Grace & Glen Rossman  
Michael Rothe  
Jean Russell  
Angie Russo  
Sherry Seubert & James Ryan  
Mary & Peter Sandberg  
SAP  
Kirk & Donna Scattergood  
Margaret & Tim Schoewe  
Tamara Schoof  
Thomas Schouten  
Anne Schuette  
Craig & Sandy Schultz  
Carol Schuster  
Jane & Dan Seidl  
Jean & John Shannon  
Robin Share  
Mark & JoAnn Shropshire  
Patricia & Steve Smith  
Scott Spoolman  
Kurt & Susan Sroka  
State Farm Companies  
Foundation  
Ron & Nancy Stein  
Ronald Stieglitz  
Thomas & Mary Jo Stock  
Scott & Holly Stoner  
Chris Stout  
Irene Strohsbeen  
Lisa Strong  
Rosemary Stuebi

Robert Sullivan  
Bob Swensson  
Maria Theisen  
Roy & Mary Thilly  
Megan Townsend  
Dick Trexel  
Paul & Emily Tveite  
Roy & Sandy Uelner  
UHG  
Donna Veeneman  
Philip Villasenor  
Eileen Vocke  
Charlie Voissem  
Eleanor Wages  
Linda Walter  
Elaine Walton  
Zoe Zoesch-Weigel  
Kirsten & Jay Weiss  
Judy Wenzel  
Charles Westcott  
Megan Wheeler  
Carolyn Whisman  
Stanley & Jane Whiteman  
Brent Widen  
Edward Winter  
Linda Wirtz  
Jane & Karl Wise  
Bob & Nancy Wise  
Deneen & Lucas Wiske  
Lynda Withbroe  
Carmen & Gene Witt  
Judy & Allen Wittenkeller  
William & Kathy Wolff  
William Wolff  
Cindy & Rich Wolter  
Rich & Cindy Wolter  
Anne Wright  
Clay Zambo  
Meg Ziegelmann

### Donations to Land Maintenance and Acquisition

Paul Didion & Yvonne Bellay  
Scott Bethke  
Michael Elkow  
Peggy Enquist  
Anne Epstein

Linda & Doug Fyfe  
Tom & Kate Gomoll  
Rebecca Hawker  
Alan & Sharon Hillard  
Ruthann M. Hula

Meredith Coulson - Kanter  
Bob & Sue Kinosian  
Thomas Klosterman  
Jack & BettyAnn Kolesari  
Mary Jean Kraybill

Marie Sieker & Rod Matthews  
Terry & Ally McArdle  
Sandy Miller  
Erik Nelson  
Tony & Darlene Nowak  
Claire Fritsche & David Olson  
Randy Ostrem  
Greg & Julie Pawlak

Kirsten Pedersen  
Tom Poklen  
Lucy Reeve  
Anne Schuette  
John Schulkins  
Mark & JoAnn Shropshire  
Richard & Mary Slavik  
Lori & Jim Smasal

Laurie Stockmeier  
Richard Stollberg  
Terry Trobec  
Sue & Art Vyse  
Roger Ruggeri & Andrea  
Wagoner  
Carolyn Whisman

### Donations to Orchid Restoration

Anonymous  
John Van den Brandt  
Jane Comiskey  
Sue Moore & Chuck Czaplewski  
David Wood & Jane Doughty  
Sherrill & Al Eichler  
Anne Epstein  
David & Carol Ewald  
Richard & Carrie Hauser  
Shirley Hedman  
Steve & Annie Hogler  
Karen Jellema  
Laurie Yahr & Rich Kahl  
Raymond & Mary Kent  
Todd & Ann Kiefer  
Julie & Merrit Knox

Nancy Krause  
David & Lynn LaLuzerne  
Dawn Lemke  
Judith Leonard  
Marie Sieker & Rod Matthews  
Terry & Ally McArdle  
Natalie McCauley  
Sandy Miller  
Claire Fritsche & David Olson  
Bob & Cathi Parks  
Paul Preston  
Barbara & Paul Ristau  
Southern Door High School  
Anne Schuette  
Jim & Virginia Schultz  
Joan Schultz

Philip & Melissa Schultz  
Shelley & Larry Shea  
Mark & JoAnn Shropshire  
Bonnie Smith  
Gail Teague  
Aural Umhoefer  
Sandra & Randy Vandersee  
Philip Villasenor  
Roger Ruggeri & Andrea  
Wagoner  
Carolyn Whisman  
Elizabeth & Jim Williamson  
Wisconsin Orchid Society, Inc.  
Jerry Zaug

### Other Gifts

Chris Cramer  
Peggy Enquist  
Lenora Gill  
Jim Kinney

Donna McGreal  
Scott & Nancy Ney  
David & Lori Nicholas  
Linda & Steve Sanduski

Joseph Suchy  
Thomas & Suzanne Wilkinson

### Donations to the Range Light

Mary Ellen Murray & Dan Abata  
Door County Polar Bear Press

Sherrill & Al Eichler  
Steve & Lynn Karges

Sandy & Ed Miller  
Glenn Swanson

### Tributes

#### In Honor of Bill Wolff

George Sullivan

#### In Honor of David Zuhlke

Eldon and Kathryn McKie

#### In Honor of Demaris and Tony Martinez

Carol Warshaw

#### In Honor of Charlotte Lukes

Gretchen Schmelzer

**In Honor of George and Sharon Cobb - 62nd Wedding Anniversary**

Georgia Punswick

**In Honor of Joan Anderson**

Baileys Harbor Condo Association

**In Honor of JoAnn Mooney**

Richard Mooney

**In Honor of Karen Sandstrom**

Norman Sandstrom

**In Honor of Kayval Larson. Happy Mother's Day!**

Terry Trobec

**In Honor of Keith and Stacey McKendry**

Meghan McKendry

**In Honor of Mike and Barb Madden**

Gretchen Schmelzer

**In Honor of Ronald Horn**

Judith Haeberle

**In Honor of Sam Hoffman**

Faye Binsfeld

**In Honor of Susan Hegenbarth**

Jane Korest

**In Honor of Tony Kizonas and Sandy and Ed Miller**

Mary Ellen Murray

**In honor of Tony Kizonas's service to Southern Door, from the FFA Chapter**

Southern Door High School

**In Memory of Albert M. Fuller**

Beth Tucker

**In Memory of Allen and Angela Frater**

Main Street Market

**In Memory of Angela Frater**

Elaine Burke

**In Memory of Annette (Nan) Douglas**

Margaret & Charles Black

**In Memory of Anthony Vickers**

JoAnn Seebacher  
Pankaj Shah  
Stewart & Kathi Smith  
Julia Welch

**In Memory of Arthur Burchard Gochenour**

Thomas Klosterman

**In Memory of Betty Ragotzkie**

Doris Baumgartner  
Peggy Hill-Breunig  
Roy Thilly

**In Memory of Bob and Betty Ragotzkie**

Mark Martin

**In Memory of Carl Scholz**

Jim Birger  
James & Nancy Hoehn-Goldberg  
Judy Lokken  
Mike & Barb Madden  
Roy Thilly

**In Memory of Carl Schultz**

Bill Freyman

**In Memory of Carol Jean Arny**

Margaret Galloway

**In Memory of Deane and Edith Arny**

Arny Family Trust

**In Memory of Don Freix**

Debra Harding

**In Memory of Donna B. Johnson**

Susan Krzciuk

**In Memory of Dorothy Heckner Mendonca**

Heidi Erstad

**In Memory of Ernst J and Elsa von Briesen**

Jon von Briesen

**In Memory of Farrington and Alice Daniels**

Elizabeth Daniels

**In Memory of Francha Barnard**

Elizabeth Barnard  
Donald & Helen Bifano  
Ttee  
Gisela Brogan  
Shirley Chilson  
Robert Clemens  
Jean Davison  
Gloria Dougherty  
Sherrill & Al Eichler  
Tom & Cheryl Heth  
Kathleen Hofschild  
Rosemary Klauber  
Robert & Susan Kohout  
David & Susan Kuck  
John & Nancy La Bouve  
Gary & Gabrielle  
Langhoff  
Susan Mathews  
Stephanie Netzel  
Janet Nigrelli  
Sherry & Richard  
Osterhaus  
Betsy Rossberg  
Sue & Mike Spitz  
Roy & Mary Thilly  
Jane Wise

**In Memory of Gordon Hegenbarth**

Karen Dalton  
Glendon Brown &  
Marilyn Kinsey

**In Memory of Hudson Birkeland**

Shannon Block

**In Memory of Hugh Corbett**

Susan Beaver  
Julia Corbett  
Ann L & Lamont K  
Jacobson  
Rick & Sue Larson  
Brian & Dawn Mason  
David Risgaard  
Connie Shimek

**In Memory of Jane Tetzloff**

Debra Harding

**In Memory of Judi Buskuskie**

Chris Falkenstein

**In Memory of Karl Klug**

Harry Peterson

**In Memory of Michael and Alice Essling**

Melanie Sanders

**In Memory of Patricia and Anne Lubbers**

Sara G Lubbers

**In Memory of Robert Brogan**

Robert & Margaret  
Agnew  
Gilbert & Joyce Carlson  
Epic Systems  
Corporation  
Andrea Jauquet  
Mark & Kathy Kunstman  
Joy Rosenberg  
Mary Schultz  
Mary & Roger Schuster  
Tim & Sue Stone  
Roy & Mary Thilly

**In Memory of Robert Nichols**

Barbara Anklam  
Theron Kufahl

**In Memory of Roy Lukes**

Gretchen Schmelzer

**In Memory of Sunny Sinnett**

William L. & Marilyn  
Bieneman  
Debra Harding  
Kimberly McCauley  
James & Susan  
Ziolkowski

**In Memory of Theresa Savage**

Kathryn Beck

**In Memory of Tom Amberg**

Judith Amberg

**In Memory of Valerie Murre-Schlick**

Theresa Cain-Bieri  
Bonnie Hartmann  
Local 4982 Medics Door  
County Emerg Servic  
Robert Merline

**In Tribute to Carole Stephens**

Dave Kinnoin

**In tribute to Kayval and Don Larson**

Kerry Trobec

**Event Sponsors**

Anonymous  
Anschutz Plumbing & Heating  
Inc  
Baileys Harbor Fish Company  
Bay Point Inn  
Blacksmith Inn On the Shore  
Bob the Painter  
Bridenhagen Tree &  
Landscape, Inc.  
Glidden Lodge Beach Resort  
Cedar Beach House/Inn  
Coyote Roadhouse  
Crossroads at Big Creek  
Dentistry by Design

Door County Medical Center  
Door Landscape & Nursery  
Ecology Sports  
Grasse's Grill  
Harbor Fish Market & Grille  
Heirloom Cafe & Provisions  
Homestead Suites  
Jim Olson Motors  
Julie & Merrit Knox  
Main Street Market  
Dave Zuhlke & Jane McKie  
Meissner Landscape, Inc.  
Kevin & Kate Moss  
Peil Construction

Peninsula Publishing &  
Distribution  
Pinkert Law Firm LLP  
Roots Inn & Kitchen, LLC  
Rotary Club of Door County  
North  
Sister Bay Bowl  
The Boldt Family Fund  
Sandra and Randy Vandersee  
Waseda Farms  
White Gull Inn  
Diana Whitney  
Jane & John Whitney  
Wilson's Ice Cream Parlor, Inc.



## General Membership

Bob & Susie Abegg	Richard Basham	Paul & Cynthia Board
Mary Ackermann	Janneke Baske	Andrea Boehmer
Walter & Donna Adamic	Gordon Bass	Kendra & Kenneth Bonderud
Tim & Michelle Adensam	Lee & Susan Basten	Sarah Bonovich
Mary & Tom Afflerbach	Sarah E. Bates	Dave Boock
Thomas Agazzi	William & Linda Bauer	Marge Botchie
Karen Alesch	Mary Baukert	Kirby Bouthilet
James Alexander	Dan Baumann	David Boyarski
Sharon Alexander	James Baumann	Jerry Boyd
Frank Alfaro	James Baxter	McKim & Lisa Boyd
George & Mary Allie	Abby Bayatpour	Nancy Boyd
Thomas & Susan Alt	Pam & Jim Beck	and Ken Boyer
Anne Altshuler & David Sulman	Caroline Beckett	Laurel Braatz
Carol Ama	Tom & Penny Beerntsen	Laura & Bryan Bradley
Vicki Amundson	Jon Beggs	John Van den Brandt
Brent Anderson	Mary & David Bell	Allyn Braun
Ivar Anderson	Danielle Benetti	Carol Breuch
Jack & Susan Anderson	Kirsten Benidt	Kathy Breunig
Linda Anderson	Carl Bennett	Mike & Judy Brodd
Mary Pikul Anderson	Susan Beno	Julie Brogan
Nick & Gail Anderson	Walter Benoist	Brigid Brooks
Richard & Janet Anderson	Neil Benson	Linda Brooks
Roy & Dawn Anderson	Kim & Janet Berard	Michael & Debra Brophy
Stefan Anderson	Vic Berardi	Lesley Brotkowski
Marjorie & Dan Andrae	Steve & Clare Bergquist	Krista Clarke-Brownstein & Michael Brownstein
Jim & Cory Anshus	Joan Berkopoc	David Brukart
William & Lynn Antholine	Ricky & Gerri Bernard	Ellen Bryant
Judy & George Antos	Beth Bernardi	David & Patricia Buck
Bruce Arduser	Mark Bernstein	Elissa & Ryan Buck
Nancy Armbrust	Robert Berry	Ruth Budic
Maurie Ash	William Bestor	Katie Budrow
Jeff & Allison Attoe	Barbara Beutler	Andrea & Carl Bumpurs
Caroline & Doug Ault	Janis Bice	Griffin Bungener
Bridget Austin	Colette Marcetich-Biltz	Kris Bungener
Bruce Bahrmassel	Nancy Bingham	Amy Burke
Gina & Mark Bailey	Faye Binsfeld	Pamela Burnett
Kelly Ball	Jim & Susan Birger	Laura Burns
Linda Ballard	Gene & Patricia Bitterberg	John & Amy Burris
Michael & Laurie Bania	Jim & Trish Black	Linda Busha
John & Jennifer Barnes	Bob & Kay Blackburn	Karen Jewell-van Buskirk
Melissa & Keith Barnes	Tom & Joan Blackwood	Russell Butek
Claire Barnett	Patricia Blair	Rob Calia
Tom Barounis	Jody Bleck	Charles & Lois Calkins
Harriett Barrett	Robert & Patricia Bleck	Bruce Callow
Jean Barrett & Paul Neuman	Michael & Lucy Bloedorn	

Gregg Calpino	Lezlie Lenz Crampton	Patti & Patrick Doughman
Andrea & Theodore	Tina Crave	Wallace & Peggy Douma
Camenisch	Lynn Crawford	Charles & Rita Doyle
Sharon & Richard Canter	Cynthia & Larry Crock	Mike Doyle
Bridget & Dan Carlson	Betty Cross	Don & Jane Drees
Scott & Patricia Carlson	Susan Cubar & Thomas Jordan	Doug & Judy Drew
Susan Carlson	James & Lisa Cummings	Jane Drury
Sally & Chuck Carpenter	Philip Curry	Marc & Kris Dubick
James Cauley & Brenda	Tony Curry	David Duecker
Andrews	William H Curry	George & Susan Dugan
David & Rebecca Cavanaugh	Mitch Custer	Steve Dullard
Heather Cavanaugh	Donna Danielson	Bob & Mary Dunworth
Tina Cavitt & Tami Wood	Sara Dankle	Charles & Sonja Durkee
Stuart & Deborah Chadde	Laura Davis	Richard Durr
Deb & Don Chapman	Jean Davison	Michael Dybas
Barbara Charly	Gillian Dawson	Bill Ebbott & Nancy Paul
Lauren Charous	William Dean	Tim & Cindy Eberhardy
Bill Check	Timothy DeMaster	Scott & Marcia Eckdahl
Tony & Trudy Chelmecki	Merry Kris & Kenneth Demske	Joni Ecke
Terri & Mark Chelmowski	Sarah DeNamur	Barbara Eddy
Mike Chesta	Lois DePouw	James Eggers
Doug Chilson	Sally Dery	Carl Eisenberg
Robert Chrimer	Peter Deschler	Craig Elderkin
Timothy & Elly Chybowski	Lisa Dew	Tom & Victoria Eley
Marion Ciepluch	Dan Dexter	Michael Elkow
Nancy Ciezki	Gary & Donna Dhein	Mary Ellestad
Peter & Barbara Classen	Karen Dickmann	Kristin Elmore
Susan Hollis Clayson	Jay & Nancy Dickson	Jeff & Sonia Elser
Robert Clemens & Donna	Paul Didion & Yvonne Bellay	Bill & Arlene Engler
McGreal	Diane & Dan Dieterich	John & Clare English
Paul Clement	James C. Differding & James R.	Peggy Enquist
George & Sharon Cobb	Dickes	Nicholas & Jennifer Epley
Dave Cocagne	Lisa Dimberg	Anne Epstein
Dan Collins	Richard Dirks	Karen Erickson
Judi & Chris Collins	Catherine Ditto	Mary Erickson
Robert Collins	Gib & Gail Docken	Michael Erwin
Jane Comiskey	Daniel Doeppers	Jeanne Esch
Andrea & Terry Connelly	Steve & Stephanie Domiano	Dale Eskra
Dennis & Bonnie Connolly	Rebecca Dominik	Robert Evanson
Ellen L Connor	Nancy Donaldson	Curt & Joan Everett
Peter Conroy	Dale Doney	David & Carol Ewald
Susan Cook	Michael Dorfman	Marianne Ewig
Margie & Steve Cooper	Maureen Dorn	Jessica Exline
Gail Corgiat	Morgan Doshi	Jessica & Paul Fagan
John & Mary Corriveau	Jeanine & Kenneth Doubek	Robert & Barbara Fahrenbach
Howard & Susan Cosgrove	Christine & Dennis Double	Matt Falk
Julia & Michael Cosgrove	Gloria Dougherty & Ronald	Laurie Fallucca
Elissa Coyer	Klimaitis	Lisa Farran

Linda Fass  
Linda Faust  
Jeff Stanley & Sue Fedenia  
Barbara Feeney  
Donald Feilbach  
Bruce & Chris Fenner  
Ken & Beth Ferris  
Barbara Ferry  
Carrol Fibich  
William & Mary Figeas  
Anthony & Cathy Fiorato  
Susan Fiore  
Debbie & Ron Fischer  
Jeff & Amy Fischer  
George & Judy Fitchett  
Debra Fitzgerald  
Tom & Maureen Flatley  
James & Barbara Flint  
Russ Forbess  
Pat & Diane Ford  
Joan Fordham  
Jim & Janet Foster  
Mary & Richard Foster  
Barbara Frank  
Elizabeth Franklin  
Caroline Frantz  
Ellen Fredrich  
George & Bernie Freeman  
Nancy Freeman & Jim Wallace  
Melanie Freisinger  
Lee Frelich  
Sarah & Bill Freyman  
Tom & Laurie Friedrich  
Marian Frigo  
Vicki Fricke  
Claire Fritsche & David Olson  
Sarah Fritz  
Mary Anna Froelich  
Philip Frystak  
Barbara Fuhrmann  
Marsella Fults  
Linda & Doug Fyfe  
Gary Gabrielsen  
James Gallt  
Patricia Gardi  
Jac & Edith Garner  
Lois & Gerald Garrity  
Stephen & Aimee Gauger

Cheri Geiger  
Patrick & Sandra Gerick  
Dorothy Gerrits  
Gary Gerstner  
John Gesme  
Carolyn Giannunzio  
Lynn Walter-Gibbs  
Lisa Gideon  
Joan Gilbertson  
Andy Gill  
Dennis Gill  
Larry & Darcy Gill  
John Gilling  
Kathy Gilmore  
Georgio Gimelli  
George Gissell  
Margaret Glatz  
Pat Glen  
Edward Glover  
John Glowicki  
Mark Gnabasik  
Daniel Goetschel  
Janis Goetz  
Thomas Goletz  
Linae Golla  
Dale Goodner  
Fawn Gottschalk  
MaryJane Grabowski  
Gwenn Graboyes  
Paula Graff  
Greg & Janis Gralewski  
William Granger  
Maureen O'Donnell-Gray  
Marita Green  
Tad & Deb Greene  
Bob Grese  
Joe Grigsby  
Mike Grimm  
Peter Grimyser  
David & Marleah Grinnell  
Priscilla Grittner  
Jan Groen  
Larry Gross  
Kristan Grote  
Gary Gruenisen  
John Guenther  
Beth Gullickson  
Don & Joyanne Gustafson

Diane & Brian Gustin  
Laurie Haig  
Cass Hale  
Jack & Susan Hale  
David Hall  
Todd Halperin  
Tara & Jim Halstead  
Paul Halverson  
Nancy Hammen  
Holly & Kevin Hampson  
Steve & Peggy Handrich  
and Terri Hanke  
Catherine Hankerson  
Nancy Hanks  
Pete & Jill Hanley  
Ellie & Mark Hansen  
Lee Hansen  
Lindsay Hanson  
Meredith Hanson  
Wayne & Janet Hanson  
Marilyn Hansotia  
Gail Van Haren  
John H. Harris & Lisa Palermo  
Kathleen Harris  
Karen Hart & Jim Loeffler  
Katie & Brad Hartmann  
Dick & Donna Hartvigen  
Jim & Becky Haselton  
Rita Hassert  
Peter Hastings  
Michael & Lisa Hatch  
Eugene D Haug  
Richard & Carrie Hauser  
Rebecca Hawker  
Margaret Hayes  
Amy Healey  
Bill Hebal  
Shirley Hedman  
Michelle Hefty  
Jim & Sue Heiden  
Kirstie & TJ Heidenreich  
Jean Heidt  
Dave Heilman  
Pam & Craig Heilman  
Bruce Heling  
Kenneth Heller  
Mel Hendrix  
Jean Henke

Christine Henninger  
Jeff & Patty Henry  
Rita Herbst  
Lisa Hermann  
Nita Herreman  
Lawrence & Joanne Hersam  
Margaret Jensen-Heth &  
Frederick Heth  
Stephen Hey  
Ann Heyse  
Jeff & Pat Hickey  
Tom Hickey  
Alan & Sharon Hillard  
Allan Hins  
Barb Hirsch  
Judy Hoard & Beth  
Ringgenberg  
David Hoel  
Brady Hoes  
Rose & Mike Hoffa  
Susan Ford-Hoffert  
Michael Hoffmann  
Kathy Hogan  
Steve & Annie Hogler  
Rana & Will Holbrook  
Ron & Alice Holden  
Mark Holey  
David Hollinger  
William Hollis  
Barbara & David Holman  
Dawn Holsen  
Robert & Lisa Honig  
Hal & Joyce Hothan  
Peter & Linda Hotz  
Linda Houdek  
Bill & Melanie Howe  
Tracey Hoy  
Gail & Tom Hoyum  
David & Juliana Hubbard  
Jackie Huff  
Judith Hundley  
Amy Hurckman  
Diane Hutchins  
Ira Gaston III  
Robert Davis III  
Kenneth & Mary Ingles  
Diane & Hank Ipsen  
Carl & Judy Jackson

Mary Ann Jackson  
Barbara & John Jacobs  
Pamela Harvey-Jacobs  
Carly Jaeger  
Mary Beth & Barry James  
Carol Janossy  
Don Jauquet  
Karen Jellema  
James Jennings  
Brian Jensen  
Susan Jensen  
Mark & Ann Jinkins  
Michael Johann  
Sheena John  
Ann & Michael Johnson  
Arlene Johnson  
Brian & Kristin Johnson  
Chris & Julie Johnson  
Cynthia & Albert Johnson  
Dennis & Janet Johnson  
Gary Johnson  
Mark & Rachel Johnson  
Mark T. Johnson  
Norman & Barbara Johnson  
Sandy Johnson  
Sue Johnson  
Elizabeth & Scott Jonas  
Jon Jonas  
Gary & Debbie Jones  
Rosemary & Lee Jones  
Edward Augustine Jr.  
Mike Jury  
Judith & David Kaiser  
Judith Kalb  
Richard Kanas & Linda Moore  
Terrance Kane  
Tim Kannenberg  
Julie Kant  
Mary Ellen Kanthack  
Thomas & Judy Kapellen  
Michael J. Karch  
Ken & Laurel Karlo  
Craig Katz & Kafryn Lieder  
John Keene  
Ann & Mike Haase Kehl  
Barbara & Ed Keller  
Ron Kelley  
Thomas & Shirley Kenney

Jim Kent  
Raymond & Mary Kent  
Susan Kerzisnik  
Marguerite Keys  
Joseph & Kitty Keyser  
John & Morgan Kiedrowski  
Jones & Kurt Kiefer  
Todd & Ann Kiefer  
Catherine Kilcoyne  
Chris & Junia Kile  
Becky & Dave Kimbell  
Charles Kimbell  
Jim Kinney  
Bob & Sue Kinosian  
Wayde Kirchhoff  
Bonnie Klassy  
Barbara Klingman  
Michael Klinker  
Marilyn & Donald Kloth  
Kristina & Jason Salmi Klotz  
Lucy Klug  
Patrick & Kris Knapp  
Jim Knippen  
Janet Knock  
Richard Knowles  
Bev Knutson  
Timothy Knutson  
James & Marion Kobussen  
Teresa Kochaver & Don Hooker  
David & Paula Kocken  
Bill & Jo Koehler  
Janet Koestring  
Dennis Kois  
Kevin & Carolyn Kolasinski  
Linda Kolberg  
Betty Ann Kolesari  
Darlene Kolp  
Dan Kolstad  
Darlene Konkle  
Kelly & Steven Konkol  
Don Korte  
Jann & Keith Kostecke  
Frank & Julie Kowalkowski  
Tom & Cindy Kraack  
Thomas & Margie Krauskopf  
Emily & Robert Kraynak  
Ray Kremer  
Gary & Carol Kreml

Susan Kressin  
Steve Krings  
James Kron  
Thomas Krueger  
John Kruger  
Don & Brigid Krutek  
Paul Kruty  
Steven & Marsha Krzyzanowski  
Patrick & Sue Kubley  
Wayne & Julie Kudick  
Jude Kuenn  
Lindsey Kuhn  
Lawrie Kull  
James Kullerstrand  
Lee Kummer  
Michael Kumpf  
James & Becki Kurtz  
Elizabeth Kusak  
James Labiak  
Jane Lacy  
David & Lynn LaLuzerne  
Michelle Baenen-Lambie  
Barbara Lamping  
Laura Landergott  
Steven Landfried  
Diane Lang  
Ed & Mary Langbein  
Richard & Jan Lange  
Don & Jan Lanik  
Brian & Sue Lanser  
Andrew Larson  
Laura Larson  
Sara Latreille  
Lisa & Don LaVoie  
Paula Lawlor  
Marge Layde  
Bill Lee  
Julius Lee  
Sue LeGault  
Jason & Jennifer Legois  
Donna Leighton  
Diane Lembck  
Robert Lengh  
Judith Leonard  
Cynthia Lepkowski  
Mary Beth Lewis  
John Lijewski  
John Linck

Meredith & Richard Lincoln  
Gretchen Lindstrom  
David & Caroline Link  
Carolyn & Eldon Linnebur  
Paul Liss  
Jill Littlefield  
Deborah Logerquist  
Jeff & Mary Logic  
Ron & Judy Lokken  
Jim Lord  
Margaret Lott  
Theresa Lovasik  
Bob Love  
Katherine Luck  
Karen Ludvigsen  
Heidi Luebke  
Sherry Lundell  
Christopher Lundh  
Barbara Lundquist  
John & Mary Ann Lundquist  
Tom & Charli Lundstedt  
Rachel Lurie  
Matthew & Melissa Lutsey  
Judi Lyons  
Lisa & Steve Lyons  
Robert & Lori Machacek  
Caitlin Macomber  
Justin & Allison Madigan  
Linnea Maga  
Emily Maher  
Rebecca & Larry Majewski  
Jan Malchow  
Thomas & Shelly Malin  
Marjie Malizio  
Caroline Mallatt  
Laura & Kevin Maloney  
Karen Malzahn  
Michael Mandler  
Lisa Manges  
Laurie Manikowski  
Jon & Marjorie Margolies  
Keith Marquardt  
Gary & Helen Martin  
Pamela Martin  
Demaris & Antonio Martinez  
Lance Masters  
Mike Masterson  
Norma J Matejka

Nicole & Tim Mathes  
Randy & Karen Mathewson  
Ken & Shawn Mathys  
Jim & Mary Lee Matthes  
David & Marjorie Mau  
Eric Mau  
Ron & Lois Mauermann  
Jennifer Maurer  
Bernie & Kathleen Mayer  
Irene Mayer  
Kim McArdle  
Terry & Ally McArdle  
Paul & Maureen McBroom  
Frank Gruba-McCallister  
Leslie McClain  
Sharon McCoy  
Robert McCullough & Karen  
Tosi  
Sarah McDermott  
Karen McDonald  
David McDonough  
Thomas McElligott  
James & Susan McFeggan  
Denise McGinnis  
Carol & Mike McIntyre  
Keith & Stacey McKendry  
Rick McLaughlin  
Peter McLeod  
Marcy & Bruce McNitt  
Robert Meddaugh  
Paul & Danita Medved  
Diane Meiborg  
Alan Meikle  
Joseph & Pat Melendes  
Debra Meredith  
Linda & Robert Merline  
Patricia & Jim Nevins-  
Merriman  
Elizabeth Meyer  
Julia & Bill Meyers  
Elizabeth Mezera  
Ray & Mickey Mickevicius  
Jim & Peg Middendorf  
Chris Miller  
Josh Miller & Amy Starr  
Judith Miller  
Kris Miller  
Lesley Houchin-Miller

Paul Miller  
Tim & Shari Miller  
John Miron  
Rosaleen Miskella  
Phoebe Mix  
Robert & Carol Moellenberndt  
Jennifer Moeller  
Larry & Janet Mohr  
Wayne & Barbara Mohr  
Daniel & Noelle Moore  
Sue Moore & Chuck Czaplewski  
Susan Moore & Patricia Kiley  
Bill & Pat Moren  
Anne & Michael Morgan  
Barbara Morgan  
Lin Morgan  
JoAnne Morris  
Michael & Jolene Morris  
William Morris  
Larry Morrison  
Kevin & Kate Moss  
Mary Moster  
Helen Mueller  
Lincoln Murphy  
Linda Murphy  
Laurie & Mark Murphy  
Mary Ellen Murray & Dan Abata  
Sarah Myers  
Walter & Elaine Naleway  
Jerry & Margie Needelman  
Shawn Nehmer  
Barbara & Donald Nelson  
Cindy & Bruce Nelson  
Deanna Nelson  
Gail & David Nelson  
Jackie Nelson  
Janet & Robert Nelson  
Jon Strauch-Nelson  
Josiah Nelson  
Meryl Nelson  
Sandra Nelson  
Pat & Curt Neudecker  
David Neuman  
Michael Neuman  
Patrick Neuman  
Martha Newkirk  
Jill Newman  
John & Marianne Newton

Scott & Nancy Ney  
Nancy J. Nicholas  
Ashley & James Nick  
Dan & Penny Niesen  
Maryanne Niesen  
Kathleen Noel  
Lisa & Greg Nollin  
Peter & Sheila Nottleson  
Joe & Judy Novicki  
Tony & Darlene Nowak  
James & Jean Nye  
Phoebe O'Connell  
John O'Donnell  
Paula Oeler  
Tom & Mary O'Grady  
Diana & Gerald Ogren  
Amanda Ohly  
Mike & Mary Ohm  
Melody Sims-Ohnesorge  
Douglas O'Leary  
Pat McIntosh-Oles  
John Olsan  
Tom & Ginny Olson  
Brian & Debbie O'Mara  
Mark Opperman  
Tessa Opperman  
Peter Orlik  
Jeffery & Nancy Ortinaw  
Frank Orto  
Mark Osinski  
Raymond & Carol Ann Osinski  
Erik Ost  
Randy Ostrem  
Doug Otopalik & Julie Gerndt  
Steve Otto  
Barb Ottum  
Rex Owens  
Frank & Kathy Pammer  
Karen Pangborn  
Secelie Panske  
David Paplham  
Jill Parak & Ryan Cantzler  
Katherine Parkinson  
Alan Parks & Lynn Pierce  
Bob & Cathi Parks  
Lissa Parr  
Virginia Parsons  
Eldon Partridge

Patricia Paska  
Sanjeev Patel  
Lisa Beth Patzke  
Ameya Pawar  
Greg & Julie Pawlak  
Carly Pearlman  
Kay Pearson  
Kathy Pelto  
Dave & Colleen Penwell  
Barbara Perkins  
Judy Perkins Keen & Dave Keen  
Ann Perry  
Jeff & Linda Pershing  
Bob Pestka  
Henry Peters  
Ellen Peterson  
Harry & Sylvia Peterson  
Ethan Pflederer  
Daryl Pfontz  
Dorothee Pfundt  
Andrew & Julia Phelps  
Jessica Phelps  
John Phetteplace  
Ken & Ann Phillips  
Ann & Richard Piehl  
Patricia Pierce  
Tom & Susan Pierce  
John & Cynthia Pierson  
Kim Pierson  
Ethan Pikas  
Andrew Pirrung  
Leonard Place  
Mike & Angie Plambeck  
Patricia Podgers  
Joe & Kathy Polacheck  
Cyndi Polakowski  
John Polakowski  
Mark Polczynski  
Caroline Polster  
Mitch & Kari Poppen  
Rachel Potter  
Rose Powers  
Sandra Prebeg  
Paul Preston  
Chuck & Diane Pribbernow  
Sue Priebe  
Mary Prindiville  
Susan Prout

Julie Putman	Lori Rountree	Frank Schultz
Jim Raatz	James Rowings	Jim & Virginia Schultz
David & Jane Scholz-Raben	Eugene Rubin	Jim & Marti Schultz
Ken & Marilyn Rabideau	Michael Ruddick	Philip & Melissa Schultz
Debra Rade	Patricia Rudolph	William Schultz
Joe & Marie Rakoczy	Roger Ruggeri & Andrea	Paul Schumacher
Tim Rand	Wagoner	Carol Schuster
William & Sharon Rasmusson	Stanley & Dorothy Russell	William Schuster
Kathleen Ratteree	Daniel Russert & Branka	Barbara Schutt
Jill Ray	O'Sullivan	Cindi & Jeremy Schwab
Patty Ray	Chuck Ruth	Jocelyn & Jeff Schwager
Donna Recht	Bob Ryan	Andrew & Sarah Schwalbe
Ralph & Donna Redlin	Ed Sadowski	Carl Schwartz
Dan & Kim Redman	Paul Sager	Jim Schwengel
Linda Reed	Karla Sagorac	Diana & Norbert Scribner
Nancy Reeder	Mick Sagrillo	Linda Seaquist
Paul Regnier	Kimberly Sailor	Mary Seeberg
Tom & Carolyn Rehberger	Chuck Salisbury	Jane & Dan Seidl
Anna Reiser	Mary & Peter Sandberg	Jody & John Selenica
Kirsten Reitan	Marie Sander	Stephen & Paula Settle
Alan & Jane Rentmeester	Linda & Steve Sanduski	Sherry Seubert & James Ryan
Colleen & Edward Reshel	Erik & Stacie Sandvig	Katherine Severson
Mary Reynolds	Lynda Sanford	Cindy Shallock
Richard Reynolds	Ed Sarna	Bryon Shea
Steve & Fran Richman	Gordon Saron	Daniel Sheehy
Gordon Ridley	Mark & Jane Savides	Michael & Catherine Sheets
Donna Rippin	William Schaars	Alan Shepard
Barbara & Paul Ristau	John Schaefer	Ron & Carol Sherman
Ruth Ritter	Rick Schaefer	Ron Shiffler
Larry Ritzman	Clarence & Mary Anne Scherer	Gregory & Joyce Short
Joan & Toby Roberts	Phyllis Schippers & Timothy	Mark & JoAnn Shropshire
Dave & Barb Robinson	Maatman	Karen Shumway
Rob Rock	Jackie & James Schira	Ross & Ginny Siegel
Todd & Sheryll Rockway	Kenneth & Virginia Schlichter	Marie Sieker & Rod Matthews
Carla Roden	David Schmitz	Carl & Lori Sieracki
Marc & Becky Roehl	Joan D. Schneider	Aretha Sills
Julie & Rick Rogers	Mike Schneider	Sid & Carol Simmons
Patricia Rom	Robin Schneider	Jack L Simon
John & Mary Rooks	Joe & Kathy Schoening	Paul & Bonnie Simons
Elizabeth Rose	Margaret & Tim Schoewe	Laura Simpson
Rick & Dianne Rose	Traci Schott	Kenneth Singer
Adam Rosenstein	Thomas Schouten	Karin Skare
Becky Rosenthal	Dave Schroeder	Jeff & Barbara Skiles
Deborah Rosenthal	Charles & Karen Schudson	Elizabeth Skinner
Robert & Cynthia Ross	Anne Schuette	John & Pat Skogsbakken
Glen & Grace Rossman	Martha Schulkins	Laura Slusarski
Britton Roth	Craig & Sandy Schultz	Jim & Lori Smasal
Michael Rothe	David Schultz	Bruce Smith

Holly Smith & Larry Gales  
Jeanne Smith  
Mark & Karen Smith  
Pamela Smith  
Patricia & Steve Smith  
Steven & Bonnie Smith  
Christopher Smithka  
Reagan Smoker  
Michael & Elizabeth Sodic  
Anda & Stephen Sokalski  
Evelyn Sommers  
Roberta & Steve Sparenberg  
Katie & Paul Sparks  
Glenn & Kathy Spevacek  
Mary Spittell  
Judy Spitzley  
Anthony & Lynda Spoo  
Wayne & Christine Sportsman  
Mark Sprague  
John & Jill Spude  
Tim Spurgin & Gretchen Revie  
Marie Squire  
Keith & Helene Stadtmueller  
David & Sara Stanley  
Emily & Steve Stanley  
Linda Stark  
Randall Steele  
Karen Steen  
Ron & Nancy Stein  
Michael Steinbach  
Susan Steinbrueck  
Diane & Terry Steiner  
Elizabeth Stender  
Gary & Susan Stenzel  
Carole & James Stephens  
Mary Stevens  
Ronald Stieglitz  
Laurie Stockmeier  
Chase Stoeger  
Stacey & David Stoehr  
Sandra Stoneham  
Marjorie Stoneman  
Holly H. Stoner  
Raymond Stoppenbach  
Chris Stout  
Thomas Stram  
Michelle Street  
Linda Strike

Steve & Jan Stringer  
Irene Strohbeen  
BILL STROTMAN  
Rich & Jennie Stultz  
Joseph Suchy  
Kate Sullivan  
Mathew Sullivan  
Maury & Ann Sullivan  
Robert Sullivan  
Bill Surbaugh  
Ellen Sushak  
Micky & Gerry Swanson  
Bob Swensson  
Amy Wilquet Swette & David Swette  
Margaret Sylvester  
Peter & Judy Sytsma  
Robert & Christine Szafraniec  
Frank Szatkowski  
Chuck Szoke  
Miriam Takle  
Jeremy & Megan Tepe  
Roberta & Peter Thelen  
Roy & Mary Thilly  
Marcelyn Thobaben  
Lisbeth & Kurt Thomas  
Mark & Daria Thomas  
Seth & Katie Thomas  
Thomas J. Thomas & Candice Maynard  
Dave & Debbie Thompson  
Denise & Earl Thompson  
Linda & David Thompson  
Judi Tilghman  
Carol Tishler  
Jean Tobin  
Margaret Toner  
Susan Toth  
Leigh Tracy  
Robert & Mary Trainer  
Dianne Trenchard  
Joel & Patti Trick  
Nancy & Joe Trimberger  
William Trost  
Dixie Tubbs  
Arlie & Mary Tucker  
Michael Tyree  
Roy & Sandy Uelner

Barbara & Richard Untch  
Stephen Urbrock  
Sandra & Randy Vandersee  
Vince Varone  
Barbara & Joe Vass  
Kathleen Vaught  
Susan Ventura  
Lee Vermilyea  
Louise & Robert VerWert  
Steve & Debbie Viktora  
Philip Villasenor  
Genevieve Voissem  
Roger Van Vreede  
Chris & Steve Vuco  
Sue & Art Vyse  
Diane Wachdorf  
Cheena Wade & Robert Anderson  
Patricia Wafer  
Eleanor Wages  
Anneliese Waggoner  
Rachel & Benjamin Wagner  
Gregory Wagoner  
Ron Wajer  
Sharon Walchessen  
John Waldron  
Emily Walker  
Robin Walker  
Carol Wall  
Jane Wall  
Carl Wallace  
Diana Wallace  
Joe Wallner  
Linda Walter  
Ken Wardius  
Andrew Warren  
Tim & Tiffany Wassenaar  
Deirdre Watts  
Scott Weber  
Evan & Lurana Webster  
Kristin Wegner & Eric Howe  
Brad & JoAnn Weir  
Jane Weis  
Kirsten & Jay Weiss  
Mark & Patty Weisse  
Tom & Sandra Weller  
Judy Wenzel  
Nancy Wenzel



Eileen & John Werblow  
Dante Werner  
Bill & Trudy Wessels  
Charles Westcott  
Dave Westen  
Joni Westenberger  
Sharon Wester  
Pamela Wheatley  
Megan Wheeler  
Carolyn Whisman  
Adam White  
Kevin White  
Sarah White  
Stanley & Jane Whiteman  
Jay Whitfield  
Carl Whitney  
Jane & John Whitney  
Gary & Claire Wick  
James Wickesberg  
Debbie Wickman  
Jeffrey Widder  
Joe Wiedenmeier

Tim & Cathy Wiegman  
Jerry & Sue Wieland  
Gail & W.T. Wiley  
Gerald Willey  
Charles Williams & Jeff Herbst  
James Williams  
Caitlin Williamson  
Elizabeth & Jim Williamson  
Howard Williamson  
Barbara Wilson  
Dennis & Jean Wilson  
Misha & Heidi Wilson  
Erica & Matt Wiltermuth  
Barbara Winter  
Edward Winter  
Catherine Wirtas  
Robert & Therese Wis  
Jane & Karl Wise  
Robert Wise  
Deneen & Lucas Wiske  
Lynda Withbroe  
Carmen & Gene Witt

Carol Woerfel  
Terry Wolf  
Brenda Wolfe  
Andreas Waldburg Wolfegg  
William Wolff  
Jane Woodward  
Chris Wren  
Lynda Wright  
Dorothy Wyandt  
Jim & Candy Yonker  
Margarita Zamora  
Jerry Zaug  
Sarah Zaug  
Laura Zawadzki  
Dwight & Pam Zeller  
Elizabeth Ziegler  
John & Peggy Zimdars  
Tom Zimmerman  
Paul & Barb Zoschke  
David Zuckerman  
Dave Zuhlke & Jane McKie  
William Zwicky

## Lifetime Membership

Eugene Abraham  
Cynthia & Fred Acker  
Edmund Adamic  
Betty Alexander  
Virginia Amen  
Heather Andersen  
Betty Anderson  
Stephen Anderson  
Robert & Dorothy Anderson  
Joanne Anderson  
Eula Anderson  
Judy Appel  
Patricia Armstrong  
Edith Arny  
Eric Aynsley  
Inge Alverson Bacon  
Karl Bahr  
James Baker  
Jane Balcer  
Anne N. Baldwin  
Edith Ballin  
Harry Banzhaf  
Richard Barry

Rudolph & Marilyn Barta  
Wilbert Bartelt  
Earl Bauby  
Lillian Baumgaertner  
Paul Baumgaertner  
Doris Baumgartner  
Jon Beadell  
Anita Been  
Allan Bell  
Hugh Bell  
Mary Bellin  
David Bergmann  
William Beringer  
Robert Berns  
John Best  
Carol Bielefeldt  
Harry Bierma  
Vlasta Blaha  
Rhonda Bliss  
Josephine Blue  
Kelly Boettcher  
Charlotte Booth  
Kenneth Boyd

Carol Boyd  
Norma & John Bramsen  
William Brann  
Jay Brickman  
Jon von Briesen  
Theodore & Peggy von Briesen  
Phyllis Brissenden  
Robert Brogan  
Judith Brown  
Anthony Bryant  
John Bryngelson  
John Bubolz  
Donald Buchholz  
Daulton Buckingham  
Barbara Buckingham  
Dennis Buckingham  
Donald Lee Buckingham  
Lynn Budzak  
Arthur & Kathryn Budzak  
Ted & Judy Buenzli  
Denise & William Buenzli  
Ann Burgess  
Evelyn Burnidge

Charlotte Burr  
Frances Burton  
Michael Burton  
Josh & Ruth Buss  
Virginia Calhoun  
R. David & LaVonne Callsen  
Gilbert & Joyce Carlson  
Carl Carlson  
Charlotte Carnot  
Julie & John Carpenter  
Janet Change  
Beth Chapman  
Susan Charles  
Phillida Charly  
Jeanne Chase  
David Chomeau  
William Cisewski  
Carl Cochrane  
J. Collester  
Pauline Collins  
Helen Conlon  
Sucheta Connolly  
Scott Cook  
Signe Cooper  
Jane Cordon  
Andrew Coulson  
Jennifer Course  
Emma Cowling  
Corlita Cramer  
Chris Cramer  
Susan Crawford  
Elisabeth Creutz  
Paul Crittenden  
Karen & John Crotty  
Trissa Crowley  
Robert Curley  
Hugh Davis  
John W. a. C. Dawson, Jr.  
J. Dearholt  
Christi Decker  
Gordon Delsart  
Gladys Delvoye  
Maira Desch  
Donald Detmer  
Thomas & Rose Detmer  
John Devlin  
Charles Dickson  
Marianne Diekman

Dorothy & Robert Dieter  
Daniel Dilts  
Sam Dimaggio  
June Dittl  
Michael Doerr  
Michael Doran  
Anna Doudlah  
Annette Douglas  
Gloria Drummond  
Greg Dziadosz  
Angela Ebzery  
James Eggener  
Sherrill & Al Eichler  
Kathryn Elliott  
William Emerson  
Dale Engstrom  
Thomas Erdman  
Miriam Erickson  
Barbara Erlenborn  
Suzanne Eschenbach  
Alice Essling  
Sharon Cook Fahrney  
Beth & Kevin Farrell  
Susan Farrell  
Suzanne Le Feber  
Kenneth Fehrer  
Robert Fellman  
Jessie Fiedler  
Kenne Findley  
Judith Fischer  
Gail Fischer  
Ellen Folsom  
Roberta Foote  
Heather Fortune  
Christopher Fortune  
James Fosdick  
Janette Franke  
Janet Frederiksen  
David French  
James Friedlieb  
Bruce & Grace Frudden  
Kerry Frumkin  
John Fulkerson  
Wendy Gaeding  
Mary Gandt  
Judith Gaskell  
Frank Gentry  
Phyllis Geyer

Thomas Gibson  
Carl Giessel  
James Gilbert  
David Gilman  
Franz Gimmler  
Elsbeth Gimmler  
Paul Girod  
Sarah & Scott Godfrey  
Ben Goldstein  
Joan Golomski  
Gordon Goodman  
James Goodwin  
Mike Goss  
Barbara Gould  
Hildy Grady  
Janet Graf  
Jerold Graff  
Larry & Ruth Ann Graham  
Alison Greaves  
William Gross  
Maurice Guptill  
Wendy Hagy  
Jeanne Halama  
Pat Hale  
Marion Hall  
Kim Hammerberg  
Norma Hammerberg  
Lucy Hammerberg  
Betsy Hansen  
Margaret Hansen  
Byron Hanson  
Lee Ann Harling  
Barbara Harris  
David & Ann Harsh  
Willard & Mary Hartman  
Bob Hastings  
William Heckrodt  
Robert Heerens  
Coggin Heeringa  
Sibyl Heide  
Fred Heide  
Lea Heine  
G. Edward Heinecke  
Doug & Renea Heinrich  
Walter Hellyer  
Dennis Herrle  
Edward Heveran  
Bill Hibbard

Dean Hickey  
Hazel Hiemstra  
Kandace Higley  
Michael Hildebrandt  
Nancy Hill  
John Hockman  
Joann Holderman  
Max Hollingshead  
Judy Hollingshead  
Jos. Hopfensperger  
Lloyd Hornbostel  
Robert Horst  
David Housel  
Nancy Housel  
Robert Huettl  
Allison Huey  
Alice Huff  
David Hughes  
Sarah Hull  
Jennifer Hull  
Heath Hutchison  
Cathy Hutchison  
Robert Hutson  
Clement & Kathleen Imhoff  
Donald Irwin  
Don Jabas  
Raymond & Jeanine Jasica  
Benson Jewell  
Elizabeth John  
Mary Ann Johnson  
Jack Termaat-Johnson  
Donald Johnson  
Ruth Johnson  
Bill Johnson  
Jeff Johnson  
Milo Jones  
Agnes Jorgenson  
Laura M. Just  
Beatrice Kabler  
Jack Kaeck  
Robert Kahl  
Steven Kahrs  
Delores Kaiser  
Darlene Kallaus  
Steve & Lynn Karges  
Carolyn Keller  
Robert Kellner  
Charles Kemper

Marsha Kerley  
Alan & Anne Kimbell  
Robert Kimbell  
Susan Kinde  
Rose Marie Klein  
Jean Klingenstein  
Julie & Merrit Knox  
Brian Knox  
Naoma Knuth  
Lois Komai  
Harry Konkel  
Marlene Konsek  
David Kopitzke  
Lon Kopitzke  
Carol Kopriwa  
Flora Kramar  
Martin Krebs  
Larry Kress  
Dick Krueger  
Agnes Kubicz  
Kenneth Lange  
Jerome & Barbara  
Langenecker  
William Lanz  
Barbara Larsen  
Warren Larson  
Ann Lawler  
Mitchell Leavitt  
Jean Leavitt  
Will Leland  
Richard Lenke  
Kenneth Lennartz  
Dennis Lenzendorf  
Richard Leonard  
Margaret Lewis  
Marjorie Lindsay  
Charles Lingelbach  
Michael Lisle  
Patricia Lison  
Marcey Loehlein  
Helen Loewi  
Dennis Lonstine  
Randall Loss  
Richard Lovett  
Louise Luebker  
Charlotte Lukes  
Sharon Lumsden  
Paul & Margaret Lurie

Jeff Lutsey  
Joanne Maass  
Lazarus Macior  
Mike & Barb Madden  
Marilyn Mahlberg  
Ann Maksymiec  
John Marquardt  
Mark Martin & Susan Foote-  
Martin  
Joy Martin  
Ruth Marty  
Jim Marx  
Lloyd McCarthy  
Neil McCarty  
Gordon McDonough  
Thomas McGovern  
Sarah McGowan  
Maureen Sandstrom McGrath  
Lincoln McGurk  
Flint McRoberts  
Mary Mealey  
Vicki Medland  
Greg & Marsha Meissner  
Patricia Meloy  
Julie Jasica-Mercola  
Daniel Meyer  
Gertrud Meyer  
Ruth Miles  
Sandy Miller  
Nancy Mills  
Mary Jane Moore  
Mosette Morrison  
Irene Mostek  
Alicia & Hugh Mulliken  
John & Nancy Munch  
Lester Munson  
Katherine Murwin  
Gene Musolf  
Rebecca & Michael Nash  
Richard Nebel  
Erik Nelson  
Michael Nelson  
Lynn Nelson  
John Nelson  
Randall Nelson  
Karl Nelson  
Charles Netzow  
Randall Nicholas

Shar Niekamp  
Andrew Njaa  
Lee Nordgren  
Barbara Norene  
Douglas Ogilvie  
Lorain Olsen  
Carol Olson  
Manley Olson  
Gale Onan  
Janet Ong  
Roger Opiela  
David Opperman  
Elaine Orstrom  
Robert Papke  
Georgia Parks  
Evelyn Parks  
Marvi Pechman  
Elizabeth Peck  
John Penkal  
Kristina Peters  
Charles Peterson  
Elaine Peterson  
Jonlee Peterson  
Patrick Pflieger  
Paul S. Phillips  
Bruce Pikas  
Larry Pitsch  
Lucille Pohl  
Maxine Du Puis  
Brian Purrington  
Michael & Carole Raap  
Joan Radomski  
Nancy Rafal  
Betty Ragotzkie  
Barbara Reeve  
Richard & Gretchen Regnery  
Christy Rentmeester  
Robert Reppert  
Mary Reusche  
Douglas Richter  
Byron Riley  
Betty Roberts  
James Rogers  
Elisabeth Rogers  
Ann Rothschild  
Michel & Judy Roy  
Kathryn Rubman  
Nancy Russell

Ruth Sandor  
Karen Sandstrom  
Cynthia Sargent  
Robert Savard  
Janet Scalpone  
Edward Scanlan  
William Scheckler  
Henry Scheig  
Valerie Murre-Schlick  
Rod Schlise  
Gretchen Schmelzer  
Merry Schmied  
Allan Schneider  
Bob Schoenthaler  
Ruth Scholz  
Claire Schubert  
Heidi Schultz  
Frieda Schurch  
Neena Schwartz  
Sally Seiler  
Jeffrey Seiler  
Shaffer  
Patricia Shelton  
Ann Shepard  
Michael Simonich  
Russell Sineni  
Sunny Sinnett  
Charles Skala  
Margaret Skinner  
Clyde Smith  
Grace Smith  
Stewart Smith  
Katherine Smith  
Dick Smythe  
Mary Smythe  
Maynard Snell  
Robert & Joanne Solem  
Nancyanne Soprano  
June Spielman  
Donald Spude  
Kurt & Susan Sroka  
Aurelia Stampf  
Mary Steckart  
Michael Steffen  
Robert Steffen  
Joyce Stevens  
Onnolee Stevens  
Nancy Stevenson

Cynthia Stiehl  
Thomas & Mary Jo Stock  
Richard Stollberg  
Stanley Stone  
Tim & Sue Stone  
Jeffrey Strumberger  
Jane Studt  
Joy Stuppia  
Thomas Sutter  
Lois Sutton  
John Swanson  
Shirley Sykora  
Thomas Tanner  
W. Taylor  
John Teichtler  
John Thanos  
Mary Theisen  
Ann Thiel  
Jonathan Thomas  
Emma Thomas  
Betty Thoms  
Gerald Tice  
Kathy Tiller  
Jason Tishler  
William & Betsy Tishler  
William Tonkin  
Martha Townsend  
Julia Townsend  
Deborah Townsend  
Nancy Townsend  
Ruth Tschanz  
Carol Tumey  
John & Judy Turner  
Barbara Turner  
Sheila Turner  
William Urbrock  
Rosemary Utzinger  
Dorothy Vallier  
E. Vedell  
Thora Vervoren  
David Vinton  
Randall Wade  
Kaye Wagner  
Robert Wagner  
Brian Wake  
Judy Walch  
Priscilla Ward  
Barbara Ward

Brian Warnecke  
Larry & Chris Warren  
Elva Waters  
Catherine Watson  
Mary Webster  
Joan Werner  
Keith White  
Hugh Whiteley

Ann Wick  
Ralph Wiken  
Susan Wiles  
Sybil Wilke  
Marylin Wille  
Wendy Williams  
Eleanor Williams  
Karen Wilson  
Mary Wilson  
Ruth Wilson  
Albert Witt

Margaret Wolf  
Thomas Wolfe  
Peter Wolter  
James Worrall  
Jane Wrede  
Rosemary Wright  
John Van Den Wymelenberg  
Elizabeth Zimmerman  
Fred Zimmerman  
Martha Zipsie  
John Zoerb

## Business Members

Annika Paulsen  
Anschutz Plumbing and  
Heating Inc.  
Baileys Harbor Fish Company  
Baileys Harbor Yacht Club  
Resort  
Bay Point Inn  
Beachfront Inn  
Bill DeVitt  
Blacksmith Inn  
Blue Moon Framery  
Coyote Roadhouse  
Destistry by Design  
Details Hair Innovations  
Door County Day Trips  
Door County Ice Cream  
Factory

Door County Library  
Door County Medical Center  
Ginnie Cappaert  
Glidden Lodge Beach Resort  
Grasse's Grill  
Harbor Fish Market  
Havngard House  
Innovative Printing  
Innovative Printing LLC  
Julie's Park Café & Motel  
Kick Ash  
Main Street Market  
Maxwelton Braes Golf Course  
Meissner Landscape and  
Design  
Nicolet National Bank  
Patricia Shoppe Ltd.

Piggly Wiggly  
Pinkert Law Firm LLP  
Quantum PC  
Ray & Mary Spangler  
Roots Inn & Kitchen, LLC  
Rotary Club of Door County  
North  
Sister Bay Bowl  
Stone's Throw Winery  
Sway Brewing  
The Boldt Company  
The Rushes  
The Thirsty Cow  
Timothy Tishler, D.D.S  
Waseda Farms  
Whitegull Inn

**It is because of you that we are strong. We look forward to our shared future, and inspiring the next generation of conservationists to continue the important work we do.**

*Thank you!*

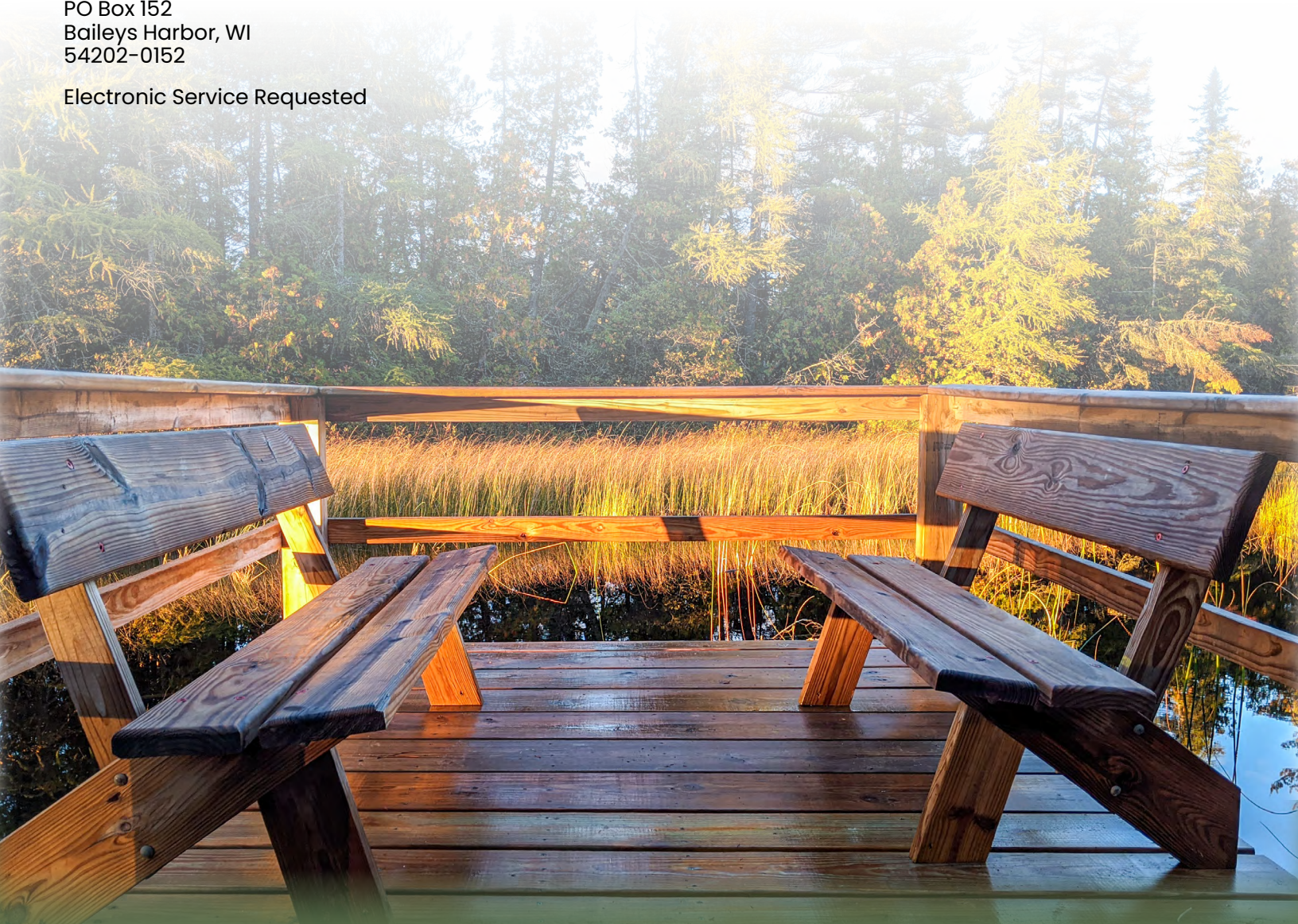


**THE  
RIDGES**

PO Box 152  
Baileys Harbor, WI  
54202-0152

Electronic Service Requested

NON-PROFIT ORG.  
U.S. POSTAGE  
**PAID**  
BAILEYS HARBOR, WI  
PERMIT NO.1



## MISSION

Today, the mission of The Ridges is to promote positive environmental behaviors through impactful educational experiences, land management and protection, and ecological research. Every day, the staff, members, volunteers and visitors ensure the mission is incorporated in all we do.

## MAKING A LASTING IMPACT

Did you know that you can leave a natural legacy with The Ridges Sanctuary through planned giving? A planned gift is a powerful way to create lasting benefit for The Ridges and ensure that your commitment to environmental stewardship will endure. To learn more about joining The Albert Fuller Society and in what ways you can give a planned gift, please contact us at 920-839-2802. We will be available to help determine the right giving option to meet your charitable goals.

It is because of your support today and your consideration of a planned gift for tomorrow that The Ridges Sanctuary continues to thrive. We value your commitment and look forward to honoring the legacy of The Ridges Sanctuary together.