



*The mission of
The Ridges Sanctuary is to
protect the Sanctuary and inspire
stewardship of natural areas
through programs of education,
outreach and research.*

INDEX

Board News	p 2
Hikes & Workshops	p 3
Journal of a Naturalist	p 4
Member News	pgs 5 & 6
In Appreciation	p 7
Jim Hale	p 8

Board Members

*President ... Ed Penecost
Vice-President ... Jean Leavitt
Treasurer ... Don Juers
Secretary ... Bob Kimbell*

Directors

*George Cobb, Carl Giessel,
Susan Hegenbarth, Alan
Kimbell, Larry Leporte,
Mary Lee Matthes,
Vicki Medland, Betsy Rogers*

Staff

*Executive Director
Steve Leonard
Assistant Director/Naturalist
Karen Newbern
Office Manager
Pat Sample
Bookkeeper
Pam Zeller*

Contact Us

PO Box 152, 8270 Hwy. 57
Baileys Harbor WI 54202
Office: (920) 839-2802
Nature Center: (920) 839-1101
Fax: (920) 839-2234
info@ridgesanctuary.org
www.ridgesanctuary.org



From the Range Light

Pathway for Success

On behalf of the Long-Range Planning Committee and Board, I want to thank our members and all who have participated over the past year in creating our vision and long-range plan. It has been a great year, listening to members and others throughout Door County.

We are at the final stages of outlining each goal with strategies and five-year outcomes. It will be posted on our website, www.ridgesanctuary.org, on January 31, 2008. If you don't have access to the internet and would like a copy, please call our office at 920-839-2802.

We've added an important part to the plan, our value statements. Members expressed these values consistently over the past year, asking that we balance protection of the sanctuary with use, preserving our cultural heritage and to remember The Ridges is a place for learning, for youth as well as adults. The Board and staff will continue to uphold and reflect upon these values as we take this journey with you.

Aligning Resources with our Needs

We have started to align resources to implement our plan. We have reshaped the Development Director position as a part-time Membership Coordinator. The position will focus on communication with members and volunteer recruitment. The Development Committee and I will take on fundraising responsibilities.

At the Annual Meeting, our members

approved several useful changes to the bylaws. The fiscal year will run from January to December rather than September to August, helping us administer The Ridges more efficiently. The Annual Meeting will move from October to the first Saturday of August. Our 2008 Annual Meeting will be on August 3rd at the Baileys Harbor Town Hall. We hope the August date will enable more members to attend.

There are exciting program initiatives under way:

- Staff and volunteers have met to plan out several citizen monitoring programs. We are spending time this winter to identify appropriate protocols that will help us understand the diversity of flora and fauna on our property. This year we will focus on a forest monitoring program, identifying canopy and understory tree species. We are also reviewing protocols for a frog monitoring program and bird surveys. All information will be logged into a database to effectively understand change over time.
- Other volunteers will continue the work done on our archives several years ago. It is important that we preserve our cultural history and reflect on the intentions of our founders and others who worked diligently to preserve the Ridges in the past.
- We are working with The Clearing

continued on page 2

Board News

Greetings,

As the newly elected president of The Ridges Sanctuary Board of Directors I'd like to tell you about my background and interests. My wife Erny and I moved to Door County in 2004 following my retirement. One of the reasons we chose to move here was the natural beauty of the landscape and open spaces reminiscent of our childhood. Prior to my retirement I worked as an ecologist and program manager at Argonne National Laboratory in Illinois and was involved in applied research and environmental impact assessments pertaining to new government construction projects, electric transmission lines, and nuclear power plant operation.

I would like to take this opportunity to thank George Cobb for his efforts as board president from 2003-2007. George spent many hours at the Ridges during this time and helped us address several difficult issues and has been a major contributor to the long-range plan.

I was impressed by the interest of Ridges members at the Annual Meeting on October 6, 2007. Steve clearly described the management areas on Ridges properties and our goals for education, community outreach, and research as key components of the long range plan. The open microphone session was very helpful by allowing members of the audience an opportunity to raise questions and identify topics for further action.

On behalf of the Board of Directors I wish to thank the Ridges members for their continued financial support and many hours of support as volunteers. I look forward to meeting more of the members and learning about your specific interests in the coming year.



A handwritten signature in cursive that reads "Edwin D. Penecost".

Ed Penecost,
Board President

Pathway for Success, *continued from page 1*

on a winter class called **Basic Construction**. Dick Malm and John Turner, instructors, will teach basic construction techniques as the class builds a new wood shed that will replace our old shed next to the Upper Rangelight. The class description and registration information is on The Clearing's website at www.theclearing.org.

- As a National Natural Landmark, we are initiating a new partnership with the National Park Service, hoping to draw on its experience and expertise as we implement our long-range plan.

- We continue to look for other partnerships. Suzanne Wagner, an artist from Illinois, will be teaching a class this spring at the Peninsula Art School using The Ridges as its site and source of inspiration. Two other volunteers have agreed to help develop a family program to assist preschool and lower elementary students explore their own backyards. This program will enhance the learning experience for parents and children at The Ridges and connect outdoor explorations to their own homes.

Fast Forward Campaign

We are excited about our plan, our new projects and partnerships. We believe each is important in furthering the Ridges' mission. To support these initiatives and to "fast forward" the plan, we need your financial help.

Thank you to all those who have already responded to the Annual Appeal. We are deeply grateful — and off to a great start but need your continued financial support. Our goal for the Annual Appeal is \$50,000 for the operating budget and another \$61,000 for special projects, including a Feasibility Study (\$15,000) supporting the long-range plan, materials cost (\$5,000) for the wood shed, and a sewer line extension (\$40,000) to protect water quality and support the Upper Range Light. The Development Committee, in conjunction with your gifts, is pursuing a variety of grants to support these initiatives as well. We hope to raise these funds by the end of February.

The Ridges is a place for learning, a place for everyone. Your commitment through volunteer efforts, involvement with planning sessions and/or financial support will help ensure that it remains so. Please call us at 920-839-2802 if you would like more information on how to get involved.



A handwritten signature in cursive that reads "Steve Leonard".

Steve Leonard,
Executive Director
steve@ridgesanctuary.org

Winter Hikes & Workshops

Winter Hikes are open to members at no charge. Guests are welcome to participate for a small donation. Register by calling 920-839-2802. *See you there!*



Karen Newbern leading a Ridges' snowshoe hike.

Snowshoe Fridays

January 4, 11, 18 and 25

February 1, 8, 15, 22 and 29

1:00 p.m.

Meet at Upper Range Light (8270 Hwy 57, Baileys Harbor) Join Naturalist Karen Newbern as we explore the frozen tundra of The Ridges on snowshoes. New sites each week. Some loaner snowshoes are available; call ahead to reserve. Dress for the weather. If there's no snow, we'll hike anyway!

Family Hikes

Bundle up the kids and join us for family-friendly hikes in the Sanctuary. Grown-ups without children are welcome, too. Please call to preregister for any or all of these hikes.

Family Hike at Logan Creek January 19, 1:00 p.m.

Let's explore the winter wonderland of the Ridges' Logan Creek Property. We'll search for wildlife signs and sounds, study snowflakes, and discover how life adapts to winter. Dress for the weather, and meet at Mr. G's Supper Club south of Jacksonport

Tracks and Traces Hike

February 16, 1:00 p.m.

We'll ramble the Ridges in search of wildlife clues and maybe some (very) early signs of spring. Dress for the weather, and meet at the Nature Center.

"Building for Bluebirds" **Workshops**

March 7 and 8, 1:00 a.m.

Roy and Charlotte Lukes will teach you how to give the bluebirds a helping hand, and share information about a local network of bluebird enthusiasts. You'll also have the opportunity to build a nesting box to take home. Donation of \$5.00 per box requested to cover cost of materials. The same program will be presented each day. **Please call 920-839-2802 to preregister for your preferred date**, so that we will have enough kits for all attending. Program will be held at Girl Scout Camp Cuesta, 8026 N. Maple Road, Baileys Harbor.



'Early Bird' Program Notes

33rd Annual Midwest Crane Count

Saturday, April 19, 2008, 5:30 – 7:30 a.m.

Join a hardy group of early risers to help inventory sandhill cranes in Door County. Call Karen at **920-839-2802** for details.

Door County Festival of Nature:

Exploring Wildflowers, Birds & Conservation

Thursday through Saturday, May 22-24, 2008

This three-day event features field trips, lectures, and workshops at various sites around Door County. **Pre-registration is required.** Call The Ridges for a registration brochure (available early March).

Bike Ride for Nature

Saturday, June 14, 2008

Leisurely bike tours (25K, 50K and 100K) through beautiful Door County. Great food, too! All proceeds benefit The Ridges Sanctuary. Call The Ridges' office or visit our website for a registration brochure (available early March).

Journal of a Naturalist

Notes on seasonal changes at The Ridges



Fringed Gentian

● After experiencing drought conditions through most of the summer, the rains returned in September and October. Solitude Swale, which was little more than a mud flat in late summer, finally had some standing water by mid-October. Year-to-date rainfall is just under 9 inches – about one-third of normal.

● A flock of about 15 **Wild Turkeys** has been regularly visiting the Range Light to feast under the bird feeders.

● The autumn rains brought an abundance of mushrooms to the Ridges trails. Some of the species identified included **Earth Stars**, **Club Fungi** (look like a caveman's club), beautiful but poisonous **Fly Amanitas**, **Witch's Butter** (a jelly fungus), and several species of **Boletes** (have sponge-like pores under the cap, rather than gills).

● **Dark-eyed Juncos** and **Pine Siskins** returned to our feeders in mid-October.

● By the end of October, the **Chickadees** and **Nuthatches** had already stashed away over 200 lbs. of sunflower seed!



Grass of Parnassus - unusual 6-petalled flower



Amanita

● November 1, there were still 4 species in bloom: **New England Aster**, **Hoary Alyssum**, **Dog Mustard** and **Evening Primrose**. A few small dragonflies (perhaps **Meadowhawks**) were still flying about the swales.

● A **Redpoll** visited the bird feeder on November 20.

● On November 27, we had our first snowfall. It was followed up several days later with four inches of a wet, heavy snow on December 1. Winter is here to stay!

● A walk through the woods on December 15 revealed plenty of animal tracks, including mouse tracks in and out of the Nature Center.



Lichen covered Tree



Mountain Maple Trail bridge

Member News

At the 70th Annual Meeting, Ridges' Members elected two new board members, Mary Lee Matthes and Carl Giessel, and re-elected Vicki Medland to another term.



Mary Lee Matthes and her husband Jim joined The Ridges soon after moving to Baileys Harbor in 2000. She began volunteering in the Nature Store, and continues to enjoy that role. Prior to retirement, Mary Lee served as the Executive Director of the Rochester (MN) Orchestra and Chorale, and as a Tour Guide for the Mayo Clinic. She also

taught music in El Paso, TX and Mentor, OH. She has volunteered for many organizations, including several dedicated to historic preservation, and has served as President of the Rochester Civic Music Guild.



Carl Giessel retired in 2004 from Bank of America, after a 42-year career in financial sales and management in banking and equipment leasing. He is an Illinois Master Gardener and Vice-President of the Willowbrook Wildlife Foundation in Glen Ellyn, IL. Carl has been involved on the Ridges' Wednesday Crew for several years, and

is Manager of the Nature Store. He and his wife Judy live in Sand Bay (across from Sister Bay) and Wheaton, IL.



Vicki Medland developed much of her love for the natural world at her grandparents' lakefront and forest properties. She pursued her outdoor interests throughout her college career, obtaining her PhD in Ecology at the University of Georgia. Vicki is currently the Associate Director of the Cofrin Center for Biodiversity and an adjunct

professor for the Department of Natural and Applied Sciences at UW-Green Bay. She is also Director of the Wisconsin Naturalists, a program to foster volunteer citizen scientists in northeastern Wisconsin.

Many THANKS to outgoing Board members:

Bob Brogan has served on the Ridges Board since 2001. His background in accounting and business management has been invaluable to the Ridges organization. Bob was President of the Board from 2002-2004, and has served on several committees, including Land, Personnel, Budget and Finance, and Planned Giving. He has also been active on the Wednesday Crew for many years.

Bob Ragotzkie was elected to the Board in 1996. During his tenure, he served as Board Secretary (1996 - 98), President (1999 - 2002), and participated on many committees, including Research, Budget and Finance, Land, Building and Planned Giving. Bob has been very actively involved with the Endowment Trust, starting with the fund-raising drive in 1997-98 and continuing as a Board representative on the Trust committee from 2003-07.

What's Up With This Weather?

The drought of 2007 was alleviated slightly by good rainfall in September and October. However, total rainfall for the year was only about one-third of normal, as of the end of November. Temperatures were slightly warmer than usual. Other weather observations from the Ridges:

Month	High Temp	Low Temp	Mean Temp	Normal Temp	Rainfall	Normal Rainfall
Sept	92	36	61	59	2.16 in.	3.43 in.
Oct	72	25	53	47	5.02 in.	2.69 in.
Nov	57	9	35	35	0.60 in.	2.53 in.

The Ridges Endowment – *What does it do?*

Note: This is a continuation of Bob Ragotzkie's article on the Endowment Trust. In the last article, it was mentioned that the endowment was started in 1997. It was actually started in 1985 by a motion from Olivia Traven and approved by the board. Thanks to Olivia Traven and the past board members, we have an endowment to financially support our programs.

What does the Endowment do? That's easy. It provides income for The Ridges. But it does more than that.

First of all the Endowment Trust provides STABILITY for the financial management of The Ridges. It evens out the inevitable ups and downs of annual gifts and other fundraising activities, and it enables the Executive Director and the Board of Directors to plan operations and programs for several years in advance.

Second, the Endowment provides FLEXIBILITY to the Executive Director and the Board of Directors. The

income from the Endowment is undesignated. That means this money can be used for operations as it has been up to now, or if the operations budget were to show a surplus (some day that will happen), the money can be used for some other purpose such as the acquisition of land or the purchase of a needed item of equipment.

Finally, the existence of The Ridges Endowment Trust lends CREDIBILITY to the organization. It tells potential grantors or major donors that The Ridges Sanctuary is a permanent and solidly based organization that is capable of carrying out its mission of stewardship.

Given these valuable attributes, the Endowment Trust should be considered by any member or supporter as a way for a gift to make a long-term difference. Consider: a gift to the Endowment of \$10,000 will provide \$500 every year and continue growing for as long as The Ridges exists.

70th Annual Meeting

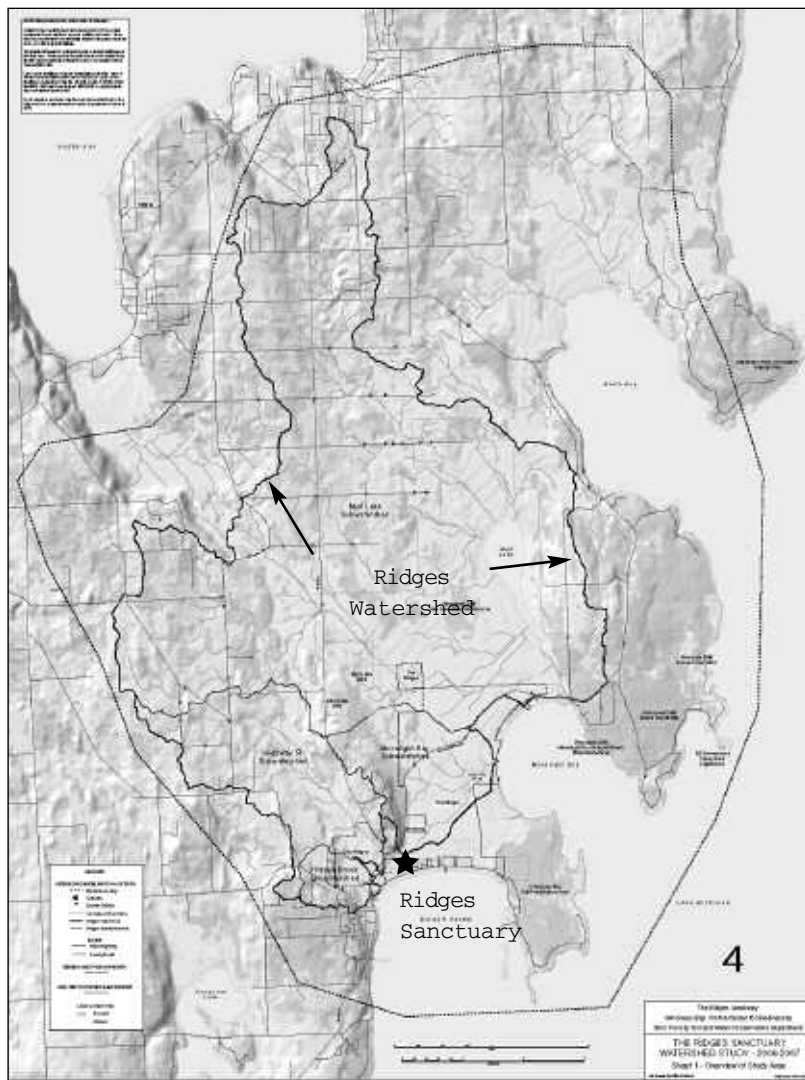
The meeting highlighted the long-range planning process and the need to change several bylaws to help us work more efficiently.

Ridges Bylaw Changes approved by members:

- Fiscal year will be a calendar year, starting January 2009.
- Annual Meeting will now be held on the first Saturday of August, starting in 2008.

Bylaws are posted on our website at www.ridgesanctuary.org

Another highlight of the meeting was a presentation by Paul Sager and Ron Stieglitz of The Ridges Sanctuary's watershed map (pictured at right). Several years of field work has produced a map to identify the drainage area around the swales, a critical component needed to help with water quality and quantity issues. This map will be for sale to members this coming summer.



Thanks for Your Generous Support

August - October 2007

Welcome New Members

Life Members

William Emerson
Jane Emerson
Paul Mahlberg

Business Advocates

Blacksmith Inn

Business Sustainers

Ecology Sports
Journey's End Motel & Cabins

Ridges Sustainers

Carol Carpenter
Mitchell & Mary Jacobs
Bruce & Mary McKay

Adult & Family Members

Kathleen Conrad
Jerry Garrity
John Jaeger
Theresa Jones
Connie Kretzmann
Susan Leonard
Domingo Parada
John Phetteplace
Marion Smith
Vesta Stromberg

Contributions

Gifts to the

Endowment Fund

Susan Crawford &
Jeffrey Rosemann

Gifts to the Operating Fund

Demaris Martinez
Mark Musial

Business Stewards

Baylake Bank

Business Sustainers

Harbor Fish Market & Grille
Weisgerber's Cornerstone
Restaurant

Ridges Sustainers

Robert Chrismer
Paul Houdek
Charles Mead

Gifts from Businesses & Organizations

Villagers Snowmobile Club
Townline Timber Services

Gifts from Members

Betty Aik
Virginia Amen
Marge Bevington
Bob and Geri Brogan
Bob and Nancy Davis
Cecile DeRouin
Megan and Pat Dickens
Dennis and Christine Double
(benches at Logan Creek)
Bruce and Grace Frudden
Don Jabas
Mary Klesner
John Kujawa
John Laansma
Roberta Larson
Jean and Mitch Leavitt
(bike rack)
Ralph Leonard
Pat Loomis
Renata Lucht
June Spielman
Dorothy Troller
Mark Woerfel

Gifts to the Garden Fund

Barbara Buckingham
Bruce and Grace Frudden
Max & Pat Sample

In honor of

Ed Miller

Denise Simeth

Judy & Michel Roy

50th Wedding Anniversary
Mary Seeberg

In memory of

Edward Ernest

Susan Stengel

Lee Forrest

Keith Bicker
Bob & Geri Brogan
Marcia Classen
George & Sharon Cobb
Wendy Collins
Jane & Richard Delcarson
Fish Creek Condo Owner's
Association
Mary Gieffers
Gordon Graves
Sue Green
Alfred Hansen
Joann Holderman
Nancy Horn
Margo Ireland
Susan Jahn
William Johnson
Bob & Carolyn Kimbell
Wayne Kirk
Lawrence Krebs
Jean & Mitch Leavitt
Mike and Julie Lesica
Mike and Barb Madden
Sally & Richard Malm
John & Gretchen Maring
Robert Merline
Karl Newman
Robert & Diane Newman
David Nielson
D. Northway
William Parsons
Ed & Erny Pentecost
Bob & Betty Ragotzkie
Max & Pat Sample
Nancy & Robert Scharfe
Al & Betty Schneider
Marian & John Sciborski
Nancy Shanahan
Michael Spinello
Robert & Mary Stamp
Aurelia Stamp

George & Lee Ellen Stolp

Joy Sutton
Jean Swanson
Morine & Jack Teichen
Lee Traven
Dennis & Karen Wojahn

Rochelle Gilson

Gerald Tice

Elizabeth Heller

Frank Egan
Allyn Ensign
James Heller
Lucille Heller
Robert Johns
James Kelly
Nancy Lincoln
Carl Nelson

James Johnson

Lee Traven

Mr. Phil LaBorde, Sr. and Mrs. Betty Zenter

Bill and Barbara Urbrock

Georgia Lingelbach

Claire Brann

Melvin Marshall

Al and Betty Schneider

Julie Maas

Lee Traven

Russell Reutzer

Kenneth Bacigalupo

Eunice Schlintz

Robert Ballin
Lee Traven
Lynda Withbroe

Geraldine Thanos

Joan Alfredson
Joyce Bauman
Robert Berglin
Clark Boren
Mary Brasseaux

Stephen Dickinson
Geoff Farr
Donna Haefler
Helen Haefler
Terry Hall
Kandace & William Higley
Marge Higley
Mary Higley
W. Tyler Higley
Virginia Hindman
Theodore Houle
Illinois Tool Works Fnd.
Linwood Johnson
Neil Johnson
Frances Kosalos
Robert Kroll
James Kudlicki
Susan Kukuk
Ruth McKittrick
Mollie Moss
Katherine & Donald Murwin
Mary Nemetz
Owen Peterson
John Pinkerton
Carl Squibb
Robert Sutton
Andrew Thanos
Charles Thanos
Joel Thanos
Larry Valencic

Lee Tishler

Edward Augustine
Richard Main
Eleanor Quint
Norman Schmidt
John Schmuhl
Adeline Schoenbrunn
Carol Tishler
Charles Tishler, Jr.
Lee Traven

Gifts to the Annual Appeal will be listed in the next issue of the Ridges News.

Ridges Sanctuary Membership/Donation Form

New Renew Change of Address Donation Memory/Honor

Name _____

Address _____

City, State, Zip _____

Phone () _____ Date _____

Charge my Visa MasterCard # _____ Exp date ____ / ____

Signature _____ E-mail address _____

Second Address From ____ / ____ to ____ / ____ Phone () _____

Address _____

City, State, Zip _____

FOR OFFICE USE ONLY: RE TY _____ RN _____ # _____ / _____

Membership Levels

Adult \$40
 Family \$65
 Ridges Sustainer \$125
 Sanctuary Steward \$250
 Ridges Advocate \$500
 Life Member (pp) \$1000

Additional Donations

Operating _____
 Endowment _____
 Land _____
 Building _____

Total _____

**Make checks payable to:
The Ridges Sanctuary**



In Memory of Jim Hale

Jim Hale, a life member and past Board member of the Ridges, passed away November 4 in Madison. He was a graduate of UW-Madison, and studied under Aldo Leopold while earning a master's degree in wildlife management. Jim spent 35 years with the Wisconsin DNR, retiring in 1983 as Director of the Bureau of Endangered and Nongame Species.

Jim's involvement with the Ridges included serving on the Board from 1982-91. He wrote numerous articles for the *Ridges News*, and led field trips for the Wildflower Pilgrimage/Festival of Nature nearly every year from 1989 to 2004. In recognition of his service, Jim was named the Ridges Volunteer of the Year in 1996.

Jim and his wife Pat were summer residents of Door County, and served as regular volunteers in the Nature Store. Jim was a natural teacher, and he frequently shared his knowledge of botany and wildlife through guided hikes at The Ridges, as well as writing articles for several newsletters and national magazines. He enjoyed exploring The Ridges in search of rare or unusual plant species, and was an excellent birder as well. Roy Lukes recalled, "On one occasion in mid-summer Jim and I donned knee boots and walked the entire length, from west to east, of the shallow swale between Sandy Ridge and Ridges Road. The most interesting plant we encountered, one that I had never seen up to that point in Door County, was the sweet flag, *Acorus calamus*. That indeed was a sweet discovery."

Jim's quiet, gracious manner and his wealth of knowledge will certainly be missed.